



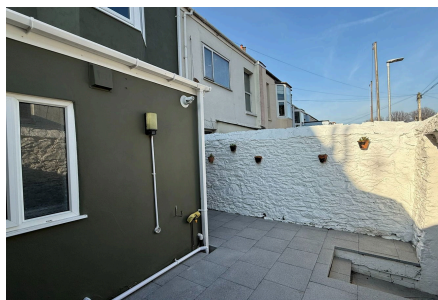
MILLINGTON TUNNICLIFF

www.millingtontunnickliff.co.uk

Egerton Road, St Judes, Plymouth, PL4 9BR

Guide Price £225,000

3 1 1



This charming Victorian terrace home is situated in the sought-after area of St Judes. Recently updated, the property features a newly installed bathroom suite, fresh carpets, and contemporary decor throughout. Offered for sale with no onward chain, this home is ready for immediate occupancy. The accommodation includes a welcoming entrance hallway, a spacious lounge, kitchen/diner, a convenient downstairs bathroom, utility area, and three comfortable bedrooms. Outside, you'll find a paved courtyard, perfect for enjoying the sunshine throughout the day, while on-road parking is available to the front (permit required during peak hours). EPC rating: E 51

01752 896020 | info@millingtontunnickliff.co.uk | 19 Fore Street, Ivybridge, Devon, PL21 9AB



MILLINGTON TUNNICLIFF

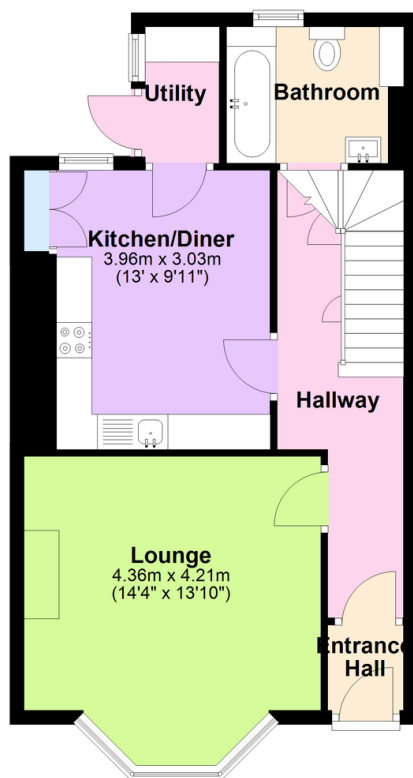
www.millingtontunncliff.co.uk

Key Features

- Three Bedroom Victorian Terrace Home
- Close Distance To The City Centre
- Lounge With Bay Window
- Kitchen/Diner With Utility Area
- Newly Fitted Downstairs Bathroom
- Courtyard Garden
- Off Road Parking (Permit Required During Certain Times)
- GCH & DG
- New Carpets & Modern Decor
- No Onward Chain

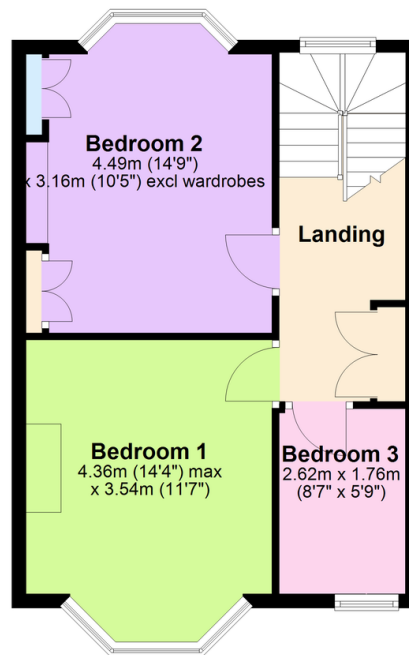
Ground Floor

Approx. 47.4 sq. metres (510.7 sq. feet)



First Floor

Approx. 41.7 sq. metres (448.9 sq. feet)



Total area: approx. 89.2 sq. metres (959.6 sq. feet)

01752 896020 | info@millingtontunncliff.co.uk | 19 Fore Street, Ivybridge, Devon, PL21 9AB