






MILLINGTON TUNNICLIFF

www.millingtontunnickliff.co.uk

Grosvenor Court, Western Road, Ivybridge, PL21 9GH

£199,950

 2  2  1



A rare opportunity to acquire a penthouse apartment in the retirement complex of Grosvenor Court. Positioned close to the town centre, this spacious apartment offers well proportioned accommodation to include; entrance hall, lounge/diner, fitted kitchen, two double bedrooms, family bathroom, en-suite shower room and walk-in dressing room. All residents have the benefit of a communal lounge, laundry room, communal grounds and parking. EPC C 72

01752 896020 | info@millingtontunnickliff.co.uk | 19 Fore Street, Ivybridge, Devon, PL21 9AB



MILLINGTON TUNNICLIFF

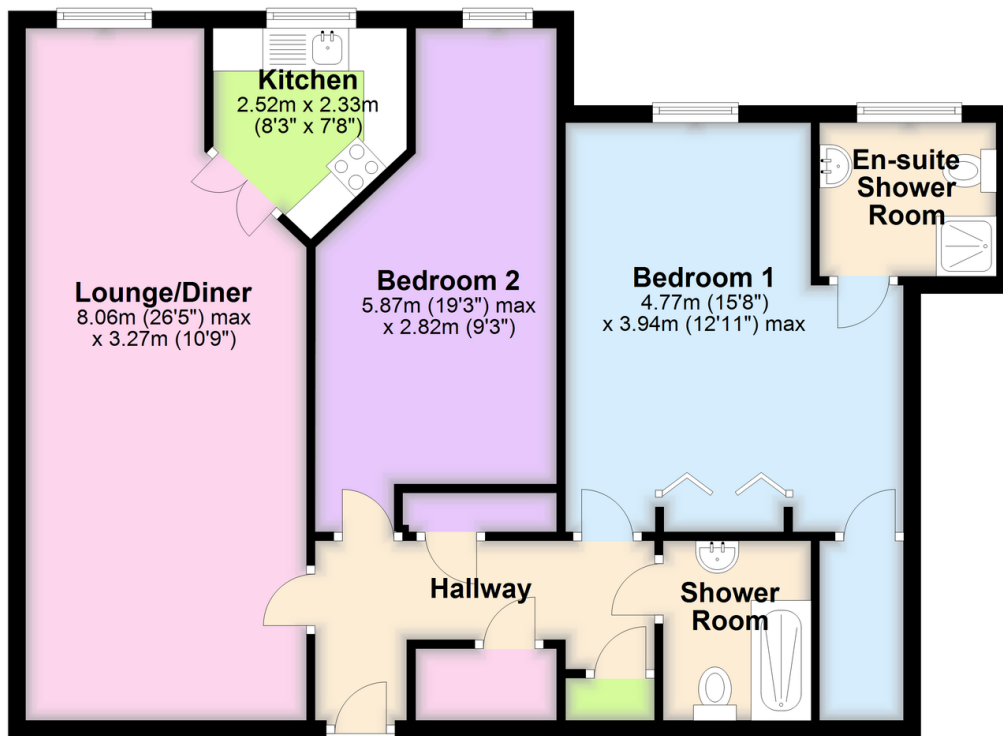
www.millingtontunncliff.co.uk

Key Features

- Penthouse Retirement Apartment
- Two Double Bedrooms
- Lounge/Diner
- Fitted Kitchen
- En-Suite & Walk-In Dressing Room
- Shower Room
- Second Floor With Lift Access
- Communal Gardens & Parking
- Close To Town Centre
- No Onward Chain

Second Floor

Approx. 79.9 sq. metres (860.3 sq. feet)



Total area: approx. 79.9 sq. metres (860.3 sq. feet)

01752 896020 | info@millingtontunncliff.co.uk | 19 Fore Street, Ivybridge, Devon, PL21 9AB