



MILLINGTON TUNNICLIFF

www.millingtontunncliff.co.uk

Crescent Gardens, Ivybridge, PL21 0BS

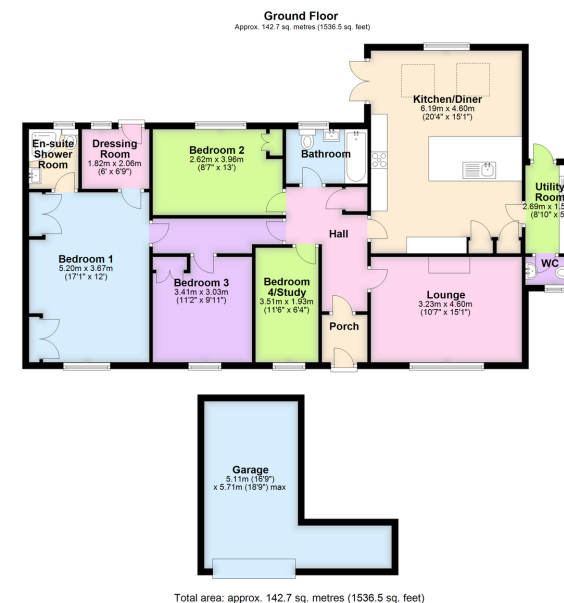
Guide Price £525,000

🛏 4 🚿 2 🛋 1

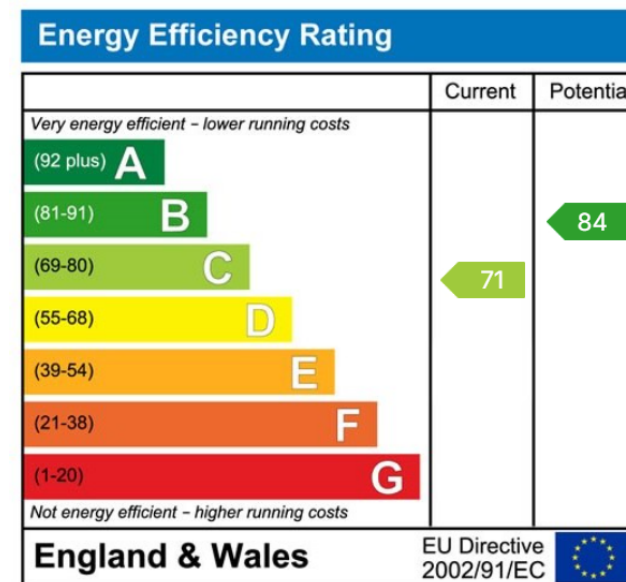


- Detached Family Home With No Onward Chain
- Lounge With Panoramic Views
- En-Suite Shower Room & Walk-In Dressing Room
- Family Bathroom
- Larger Than Average Garage With Driveway Parking
- Four Bedrooms
- Extended Kitchen/Diner With Quartz Worktops
- Utility Room & Adjoining WC
- Enclosed Low Maintenance Gardens
- Highly Sought After Area





No onward chain! A substantial 4 bedroom family home located in a highly regarded and sought after location in Ivybridge, within close walking distance to the community college and Longtimber Woods. The property offers spacious accommodation, which has been extended over the years and briefly comprises, lounge with panoramic views, extended kitchen/diner, utility room, four bedrooms, family bathroom and additional WC. The principle bedroom benefits from built in furniture, a walk-in dressing room and en-suite shower room. Externally there are low maintenance gardens to the rear which enjoy elevated views across the surrounding countryside, along with a larger than average garage positioned underneath the property with driveway parking. EPC C 71



01752 896020 | info@millingtontunncliff.co.uk | 19 Fore Street, Ivybridge, Devon, PL21 9AB