



MILLINGTON TUNNICLIFF

www.millingtontunncliff.co.uk

Bittaford, Ivybridge, PL21 0ET

Guide Price £179,950

2 2 2



A 2 double bedroom mobile home which sits on this popular semi rural site of Bittaford Woods in the village of Bittaford just outside of Ivybridge. The property was new to the site in 2003 and benefits from an entrance hall, living room, dining area, kitchen, utility, family bathroom, the 2 bedrooms and en suite shower room. There are gardens on all sides with raised decked front balcony. Unusually there are 2 separate car hardstands opposite. The property is Upvc double glazed and gas centrally heated.

01752 896020 | info@millingtontunncliff.co.uk | 19 Fore Street, Ivybridge, Devon, PL21 9AB

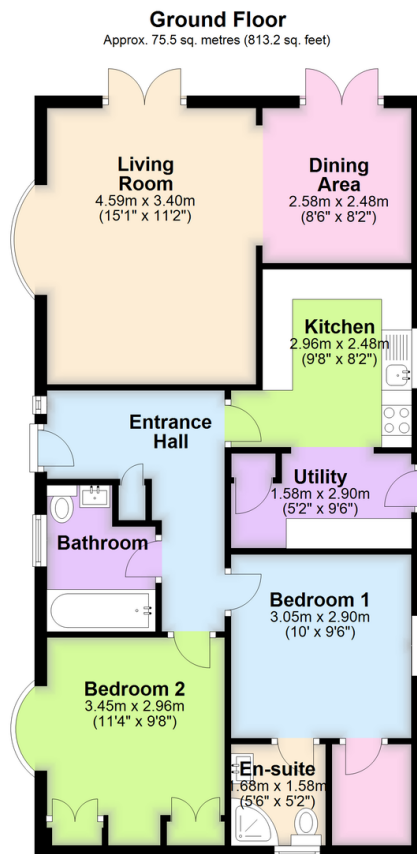


MILLINGTON TUNNICLIFF

www.millingtontunncliff.co.uk

Key Features

- 2 Double Bedroom Mobile Homes
- En Suite Shower Room
- Utility Room
- Gardens On 3 Sides
- Gas Central Heating
- Popular Site Of Bittaford Woods
- Modern Kitchen
- 2 Allocated Car Hardstands
- Upvc Double Glazing
- 2 Reception rooms



Total area: approx. 75.5 sq. metres (813.2 sq. feet)

01752 896020 | info@millingtontunncliff.co.uk | 19 Fore Street, Ivybridge, Devon, PL21 9AB