



MILLINGTON TUNNICLIFF

www.millingtontunncliff.co.uk

Principal Mill, Loughtor Mill, Plympton, PL7 5BN

Guide Price £350,000

🛏 2 🚿 1 🚗 1



LAST HOME REMAINING! A stunning second and third floor maisonette, converted from part of the former Principal Building of Loughtor Mill. This award winning property comprises a completely separate and self contained entrance hallway, glorious open plan living room/kitchen with high end integrated appliances and an open plan dining area on the lower floor, together with landing, 2 double bedrooms and shower room on the upper floor. External there are communal wooded areas and an allocated car hardstanding with car charging point. The conversion is designed for the future, having ultrafast fibre, an air source heat pump, solar panels and double glazing. EPC A 97. No onward chain.

01752 896020 | info@millingtontunncliff.co.uk | 19 Fore Street, Ivybridge, Devon, PL21 9AB



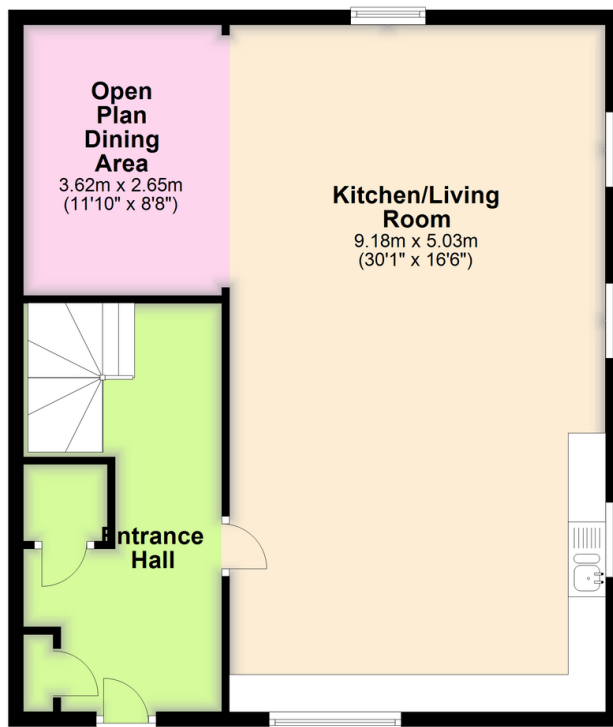
MILLINGTON TUNNICLIFF

www.millingtontunnickliff.co.uk

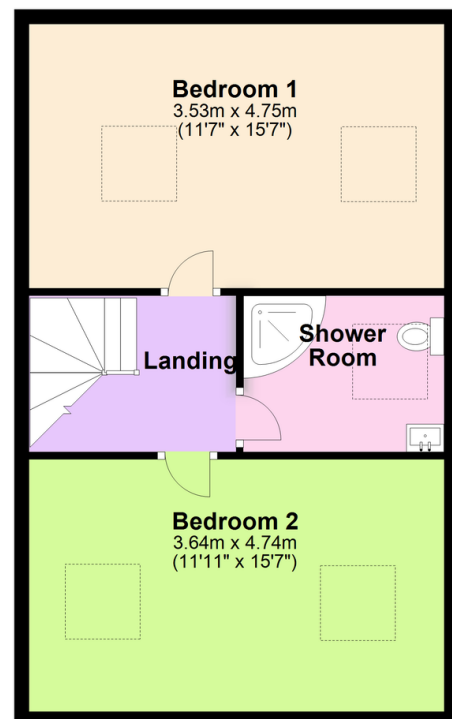
Key Features

- Character Stone Faced Converted Second And Third Floor Maisonette
- Air Source Heat Pump And Solar Heating/ Hot Water
- Part Of Award Winning Redevelopment Of Former Mill
- Double Glazing
- Some Exposed Original Timbers to upper Floor
- 2 Double Bedrooms
- Electric Car Charging Point
- Impressive Open Plan Living/Kitchen With Integrated Appliances
- Underfloor Heating To Lower Floor
- EPC A 97

Second Floor



Third Floor



01752 896020 | info@millingtontunnickliff.co.uk | 19 Fore Street, Ivybridge, Devon, PL21 9AB