



MILLINGTON TUNNICLIFF

www.millingtontunncliff.co.uk

Loughtor Mill, Plympton, PL7 5BN

£375,000

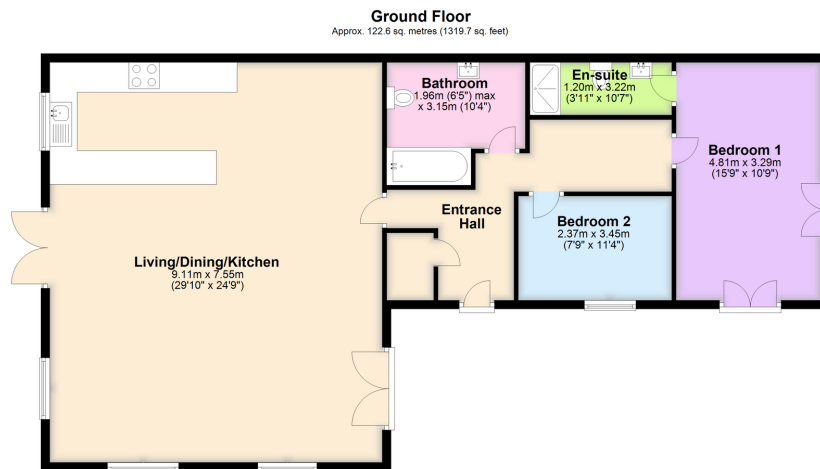
🛏️ 2 🚿 2 🚗 1



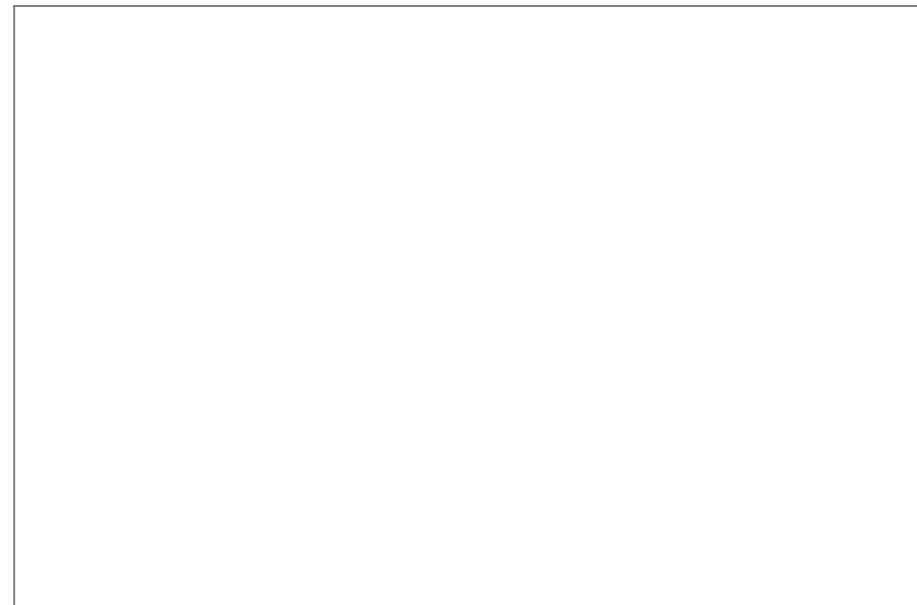
- Stone Faced Ground Floor Converted Apartment
- Air Source Heat Pump And Solar Heating/Hot Water
- Part Of Award Winning Redevelopment Of Former Mill
- Family Bathroom And En Suite Shower Room
- Double Glazing
- 2 Double Bedrooms
- Electric Car Charging Point
- Impressive Open Plan Living/ Dining/Kitchen With Integrated Appliances
- Original Features To Include 4 Steel Columns
- Predicted Energy Rating Of Band A/B



A fabulous ground floor apartment converted from part of the former principal building of Loughtor Mill. This award-winning property comprises a completely self-contained conversion of the entire ground floor, with private entrance, open plan living/dining/kitchen having triple aspect windows, 2 double bedrooms, en suite shower room and family bathroom. Externally there are small garden/patio areas at front and side as well as off-road parking. The conversion is designed for the future with underground ultrafast fibre, an air source heat pump, solar panels, electric car charger and double glazing. The predicted EPC is A/B. No onward chain.



Total area: approx. 122.6 sq. metres (1319.7 sq. feet)



01752 896020 | info@millingtontunncliff.co.uk | 19 Fore Street, Ivybridge, Devon, PL21 9AB

