



MILLINGTON TUNNICLIFF

www.millingtontunncliff.co.uk

Stable Barn, Venn Farm, Brixton, PL8 2AX

£229,950

🛏 1 🚿 1 🚗 1



01752 896020 | info@millingtontunncliff.co.uk | 19 Fore Street, Ivybridge, Devon, PL21 9AB





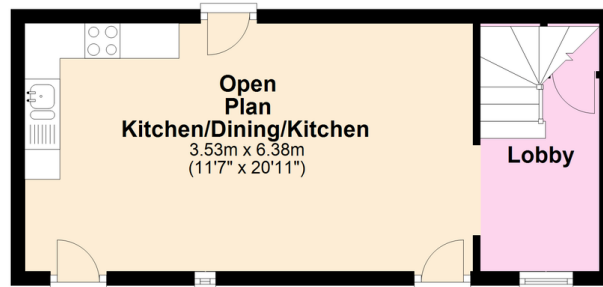
MILLINGTON TUNNICLIFF

www.millingtontunncliff.co.uk

- Character Barn Conversion
- Double Glazing
- Integrated Kitchen Appliances
- Off Road Parking
- No Chain
- Vaulted Ceilings To Upper Floors
- Gas Central Heating
- Oak Internal Joinery Work
- Enclosed Rear Garden
- En Suite Shower/WC And Separate WC

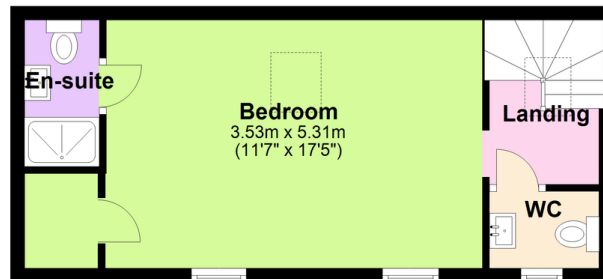
Ground Floor

Approx. 28.9 sq. metres (310.6 sq. feet)



First Floor

Approx. 28.8 sq. metres (309.7 sq. feet)



Total area: approx. 57.6 sq. metres (620.3 sq. feet)

A character mid terraced barn conversion set within the heart of the popular South Hams village of Brixton. Accommodation comprises of a spacious open plan living/dining/kitchen and study/ lobby on the ground floor, together with landing, WC, bedroom and en suite shower/WC on the upper floor. The property boasts a wealth of charm and offers oak internal joinery work, an arrow slit window and modern benefits to include gas central heating and double glazing. Externally there is an enclosed rear garden and parking to the front. No chain. EPC C 73.

01752 896020 | info@millingtontunncliff.co.uk | 19 Fore Street, Ivybridge, Devon, PL21 9AB