



MILLINGTON TUNNICLIFF

www.millingtontunnickliff.co.uk

Maritime Square, Plymouth, PL1 4SX

Guide Price £550,000

3 2 1



An exceptional 3 double bedroom second floor apartment set on the south western corner of this prestigious development, enjoying arguably one of Plymouth's finest vistas with aspect towards Plymouth Sound and Cremyll. The property is approached off a communal landing with picture window looking south which leads to a self contained entrance, fabulous open plan living/dining/kitchen having high end integrated appliances and no less than three sets of French doors to a balcony, family shower room, the 3 bedrooms and high end en suite bathroom. The apartment has underfloor gas fired heating, coated aluminium picture windows and a full length paved balcony with stainless steel and glazed railings. There is an allocated car hardstand immediately outside and a further space nearby. No chain. EPC B 83.

01752 896020 | info@millingtontunnickliff.co.uk | 19 Fore Street, Ivybridge, Devon, PL21 9AB

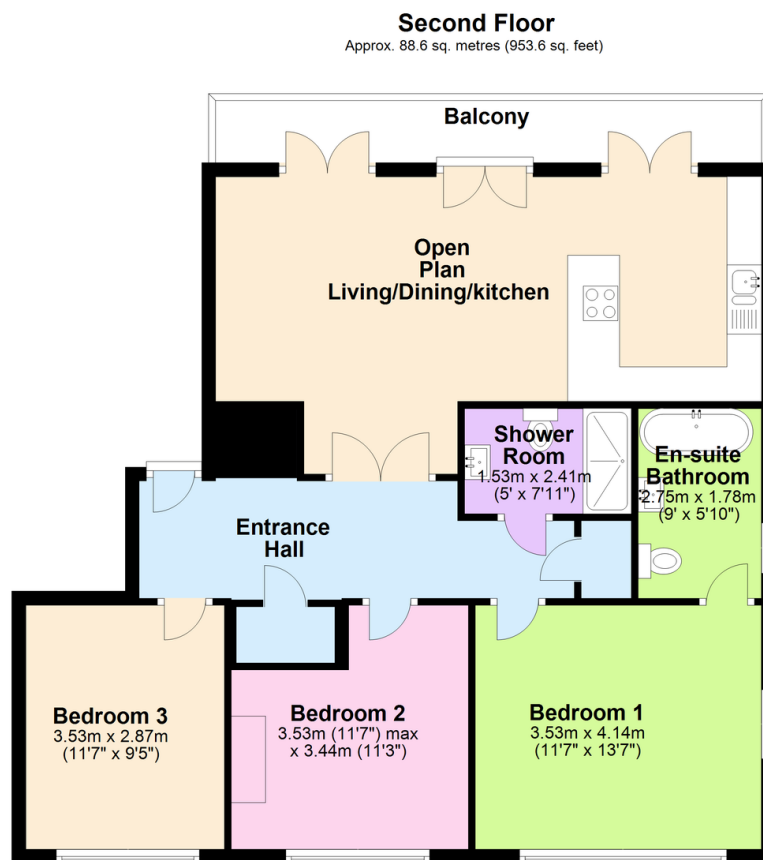


MILLINGTON TUNNICLIFF

www.millingtontunncliffe.co.uk

Key Features

- Exceptional 3 Double Bedroom Second Floor Apartment
- High End Integrated Kitchen
- Three Sets Of French Doors To The Southerly Facing Balcony
- Coated Aluminium Double Glazed Picture Windows Throughout
- EPC B 83
- South Western Corner Of This Prestigious Development Of Mount Wise
- Quality En Suite And Family Shower Room Fittings
- Underfloor Heating
- 999 Year Lease From 2011
- Two Allocated Car Hardstands, One Immediately Outside The Apartment Entrance



Total area: approx. 88.6 sq. metres (953.6 sq. feet)

01752 896020 | info@millingtontunncliffe.co.uk | 19 Fore Street, Ivybridge, Devon, PL21 9AB