



Shipleigh Cottage, Clare Street

Offers In Region Of £239,950

🛏️ 2 🚿 1 🚗 1



A most spacious 2 double bedroom end terraced character cottage located centrally within Ivybridge, convenient for local facilities and amenities. The house offers a kitchen/diner and living room on the ground floor, together with landing, the 2 bedrooms and modern bathroom suite on the upper floor. Externally there is an enclosed walled rear garden with southerly aspect. The house is Upvc double glazed, gas centrally heated and boasts numerous character feature including exposed stonework. EPC D 66.



MILLINGTON TUNNICLIFF

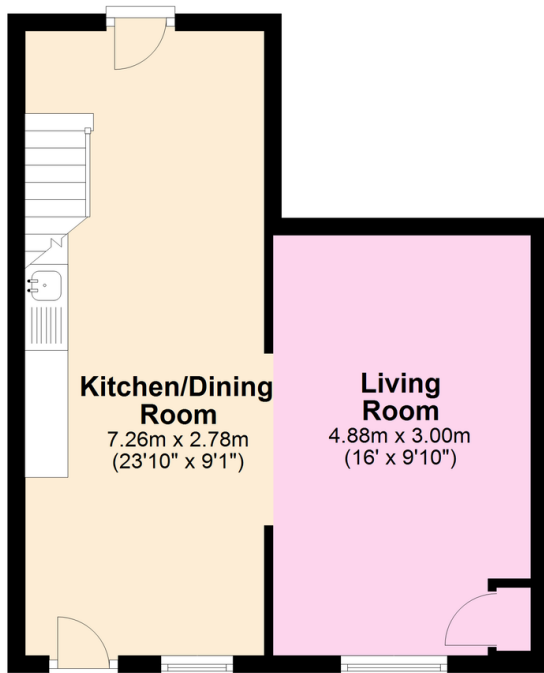
www.millingtontunncliff.co.uk

Key Features

- Character End Terraced Cottage
- Spacious Living Room
- Modern Bathroom
- Upvc Double Glazing
- No Chain
- 2 Double Bedrooms
- Modern Kitchen
- Enclosed Walled Southerly Facing Rear Garden
- Gas Central Heating
- Central Location Convenient To Local Amenities

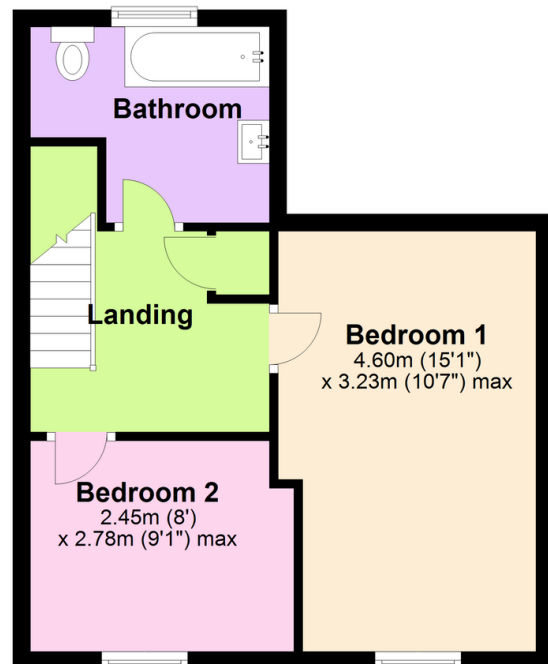
Ground Floor

Approx. 35.3 sq. metres (380.1 sq. feet)



First Floor

Approx. 35.3 sq. metres (380.1 sq. feet)



Total area: approx. 70.6 sq. metres (760.1 sq. feet)

01752 896020 | info@millingtontunncliff.co.uk | 19 Fore Street, Ivybridge, Devon, PL21 9AB