






## Slipperstone Drive, Ivybridge, PL21 9UN

Offers In Region Of £390,000

 4  2  3



An extended 4 bedroom detached house tucked away in a corner of this popular cul de sac on the western side of Ivybridge. The house offers spacious accommodation to include an entrance hall, cloakroom, living room, dining room, conservatory, breakfast room, utility and extended kitchen on the ground floor, together with the 4 bedrooms, en suite shower room and family bathroom on the upper floor. The house is Upvc double glazed and gas centrally heated. externally there is a corner plot with single garage. EPC E 52.

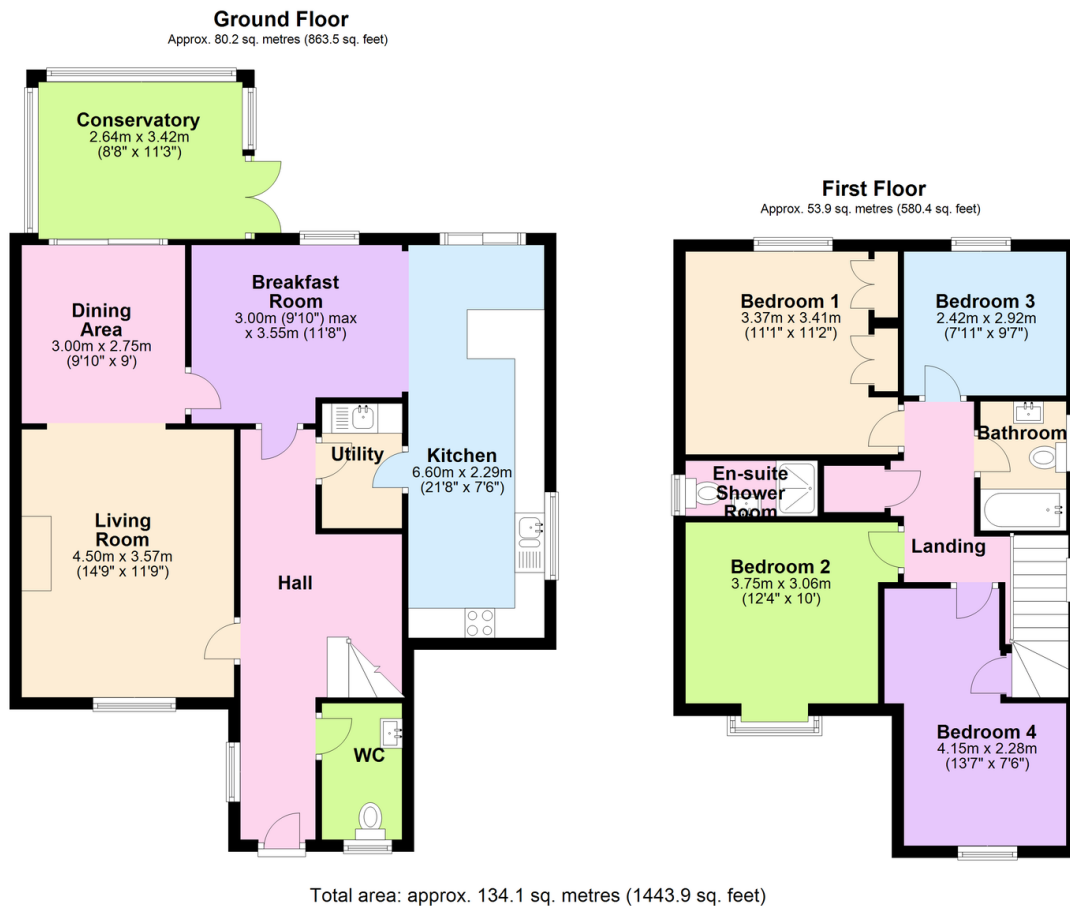


# MILLINGTON TUNNICLIFF

[www.millingtontunncliff.co.uk](http://www.millingtontunncliff.co.uk)

## Key Features

- Extended 4 Bedroom Detached House
- Spacious Extended Kitchen
- 3 Reception Rooms
- Upvc Conservatory
- Corner Plot
- En Suite Shower/WC
- Cloakroom
- Utility Room
- Upvc Double Glazing
- Gas Central Heating



01752 896020 | [info@millingtontunncliff.co.uk](mailto:info@millingtontunncliff.co.uk) | 19 Fore Street, Ivybridge, Devon, PL21 9AB