



MILLINGTON TUNNICLIFF

www.millingtontunnickliff.co.uk

Pykes Down, Ivybridge, PL21 0BY

Guide Price £255,000

2 1 1



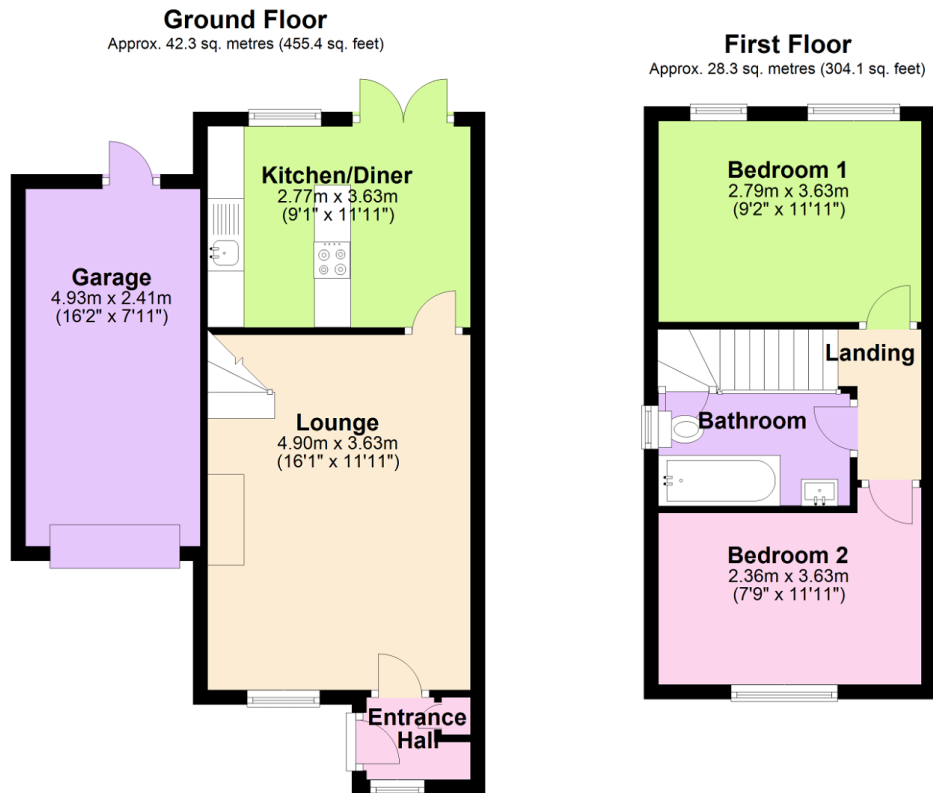
01752 896020 | info@millingtontunnickliff.co.uk | 19 Fore Street, Ivybridge, Devon, PL21 9AB



MILLINGTON TUNNICLIFF

www.millingtontunncliff.co.uk

- Two Double Bedroom Semi Detached Home
- Modern Fitted Kitchen/Diner With Integrated Appliances
- Attractive Rear Garden
- Popular Cul-De-Sac Location
- Gas Central Heating & Double Glazing
- Lounge With Electric Fireplace
- Modern Fitted Bathroom
- Garage & Driveway
- Modernised Throughout
- Early Viewing Advised



Total area: approx. 70.6 sq. metres (759.6 sq. feet)

A modern two bedroom semi detached home located in a popular cul-de-sac within Ivybridge. The property has been modernised throughout and features a lounge with fireplace, modern fitted kitchen/diner with integrated appliances, two double bedrooms and a modern bathroom. Outside there is a garage with driveway to the side and an attractive garden to the rear. An early viewing is advised on this lovely two bedroom home. EPC D59

01752 896020 | info@millingtontunncliff.co.uk | 19 Fore Street, Ivybridge, Devon, PL21 9AB