






5 Berkeley Way

£420,000

 4  2  2

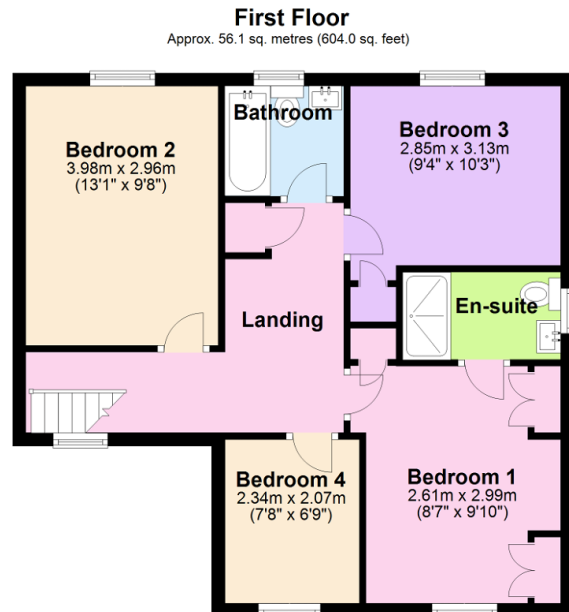
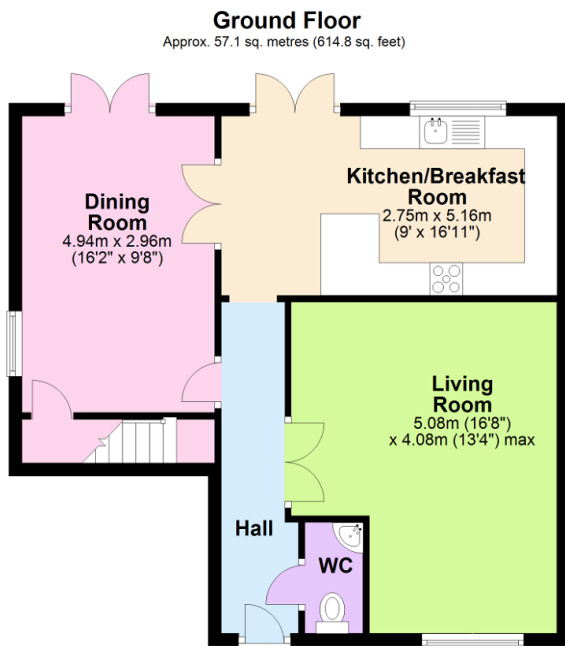


A spacious 4 bedroom detached house set at the start of this popular cul de sac on the eastern side of Ivybridge within level walking distance of local amenities. The house is of an unusual design with cloakroom, living room, dining room and kitchen/breakfast room on the ground floor, together with the 4 bedrooms and modern family bathroom and en suite shower room on the upper floor. The house sits on a level site with enclosed rear garden and enjoys a double width driveway and double garage. There is Upvc double glazing and gas central heating. No chain. EPC D 59.



Key Features

- 4 Bedroom Detached House
- 2 Reception Rooms
- Integrated Kitchen/Breakfast Room
- Double Width Drive And Double Garage
- Modern Bathroom and En Suite Shower Room
- Upvc Double Glazing
- Gas Central Heating
- Cloakroom
- Enclosed Rear Garden
- Level Walking Reach Of Ivybridge Centre



Total area: approx. 113.2 sq. metres (1218.8 sq. feet)