






MILLINGTON TUNNICLIFF

www.millingtontunncliff.co.uk

26 Bonville Drive,

Guide Price £399,950

 4  2  3



A modern 4 bedroom detached house, tucked in towards the end of this popular cul de sac on the eastern side of Ivybridge convenient for local amenities. The house offers spacious accommodation to include an entrance hall, cloakroom, living room, modern kitchen/diner and study on the ground floor, together with landing, the 4 bedrooms, family bathroom and en suite on the upper floor. The house is Upvc double glazed and gas centrally heated. Externally there is a level enclosed garden with timber clad and insulated home office and there is a single garage with driveway and additional car hardstand. EPC B 84.

01752 896020 | info@millingtontunncliff.co.uk | 19 Fore Street, Ivybridge, Devon, PL21 9AB

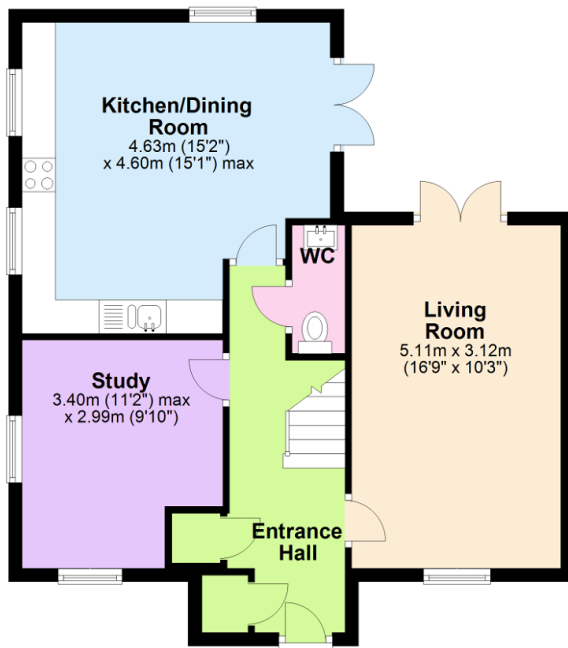


Key Features

- 4 bedroom Detached House
- Feature Insulated Home Office With French Doors
- Part Integrated Kitchen/Diner
- En Suite Shower Room
- Garage And Additional Car Hardstand
- 3 Reception Rooms
- Upvc Double Glazing
- Gas Central Heating
- Cloakroom
- EPC B 84

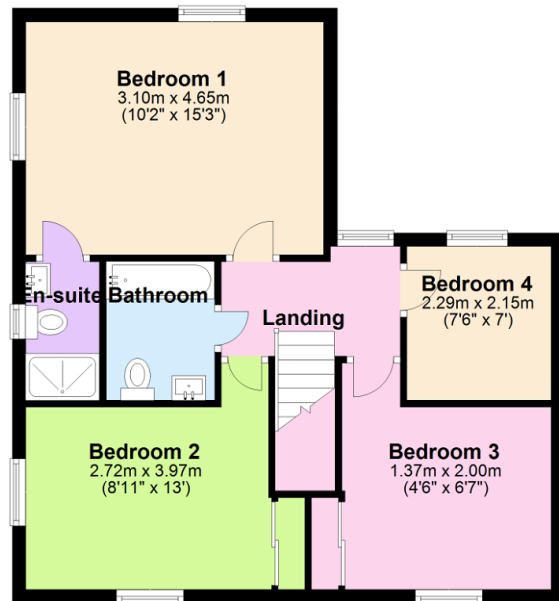
Ground Floor

Approx. 59.3 sq. metres (638.4 sq. feet)



First Floor

Approx. 54.3 sq. metres (584.9 sq. feet)



Total area: approx. 113.6 sq. metres (1223.3 sq. feet)