



MILLINGTON TUNNICLIFF

www.millingtontunncliff.co.uk

Earlscombe Mill, Bittaford

Offers Over £450,000

3 2 1



Earlscombe Mill is a character detached stone built property tucked away in this quiet rural hamlet just outside of Ivybridge. The property boasts adaptable accommodation over 3 floors with the potential to self contain the ground floor, perfect for a growing teenager, elderly parents or for rental. At ground floor level there is a porch, utility room, study, double bedroom and en suite shower room, whilst on the upper floors there are two further bedrooms, family bathroom and feature vaulted open plan living room/kitchen. Externally there is a good size mainly level garden with gravelled drive leading to the double garage. The property has oil fired central heating and numerous character features. No chain. EPC D 66.

01752 896020 | info@millingtontunncliff.co.uk | 19 Fore Street, Ivybridge, Devon, PL21 9AB

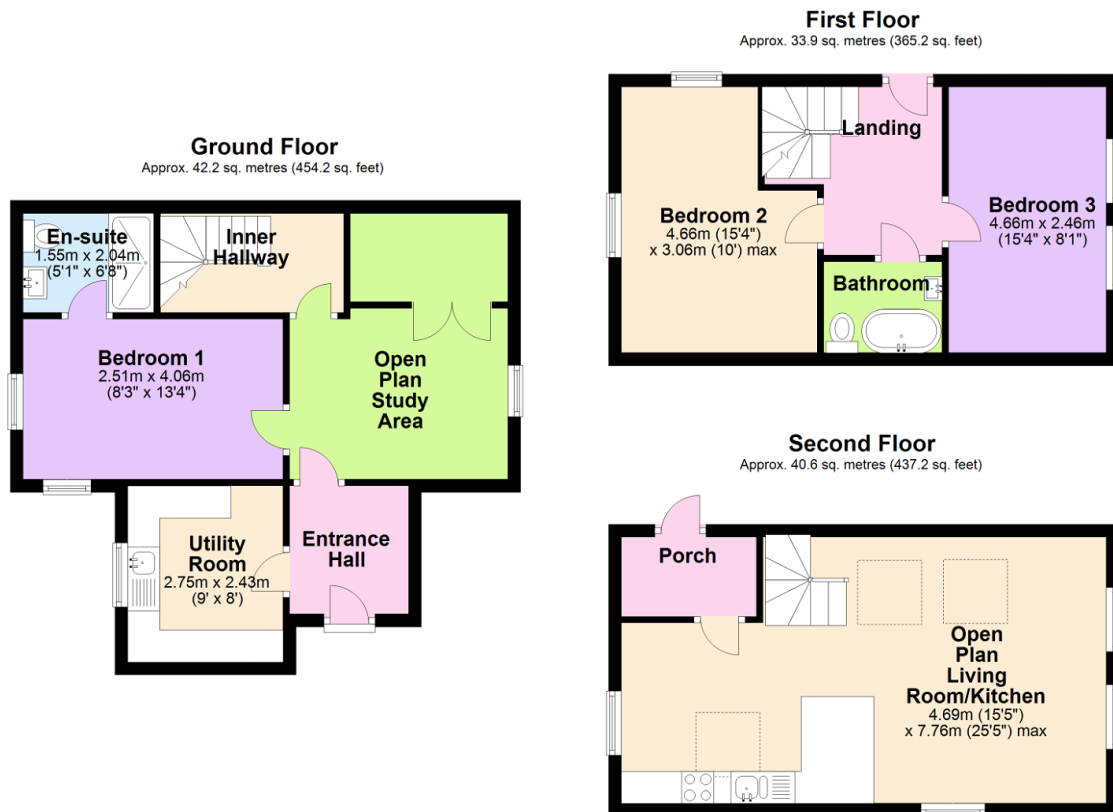


MILLINGTON TUNNICLIFF

www.millingtontunncliff.co.uk

Key Features

- Charming Detached Converted Former Mill
- Direct Access To The Exterior From All Floors
- Potential For Self Containment Of Ground Floor As Rental Unit
- Double Garage
- Oil Fired Central Heating
- Adaptable Accommodation Over 3 Floors
- 3 Double Bedrooms
- En Suite Shower Room
- Mainly Level Rear Garden
- Feature Open Plan Living Room/Kitchen With Vaulted Ceiling



Total area: approx. 116.7 sq. metres (1256.6 sq. feet)

01752 896020 | info@millingtontunncliff.co.uk | 19 Fore Street, Ivybridge, Devon, PL21 9AB