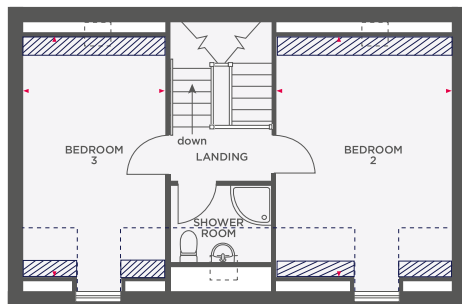
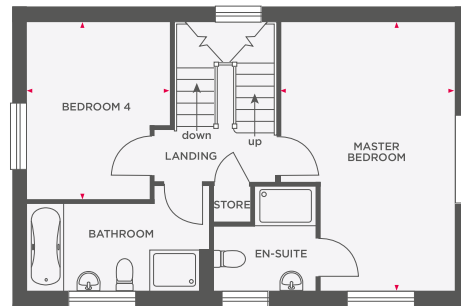
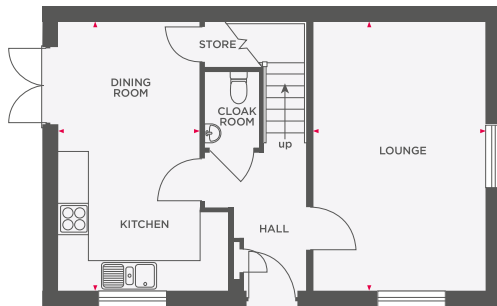




# THE WINCHESTER

## 4 BEDROOM HOME



Limited Use Area

Reduced head height below 1.5m

Lounge	3390 x 5290	11'1" x 17'4"
Kitchen/ Family Room	2800 x 5290	9'2" x 17'4"
Master Bedroom	3450 x 5290	11'3" x 17'4"
Bedroom 4	2800 x 3500	9'2" x 11'5"
Bedroom 2	3450 x 4770	11'3" x 15'8"
Bedroom 3	2800 x 4770	9'2" x 15'8"



Wain Homes abides by the New Homes Quality Code, an independent industry code introduced to champion quality new homes and better consumer outcomes. Dimensions shown are internal finished dimensions which may vary as each home is built individually and the precise internal finishes may not always be the same. Please be aware that window and door positions could vary due to plot orientation. It is essential to view the working drawings with our Sales Executive for plot specific detail. Enquire for further information. Wain Homes Policy is continuous product and specification development. Every effort has been made to ensure the accuracy of the information provided in this leaflet at the date of publication but it may be subject to change without notice. Please consult with our Sales Executive to obtain the current specification. You should take appropriate steps to verify any information upon which you wish to rely. The sizes indicated are not intended to be used for carpet sizes, appliance spaces or items of furniture. Elevational treatments may vary to those shown. These particulars are intended for guidance only and their accuracy is not guaranteed. They do not constitute a contract, part of a contract or warranty. (October 2023)

**Wain**  
HOMES