



Cartref, School Road, Ermington

£465,000

4 2 1



A rare opportunity to acquire a 4 bedroom detached bungalow set within the heart of Ermington on a mainly level plot. The bungalow has been extensively modernised under the present owners with accommodation comprising an entrance hall with utility cupboard, cloakroom, spacious open plan living room, modern mainly integrated kitchen/diner, inner hall, family bathroom, study, 4 bedrooms and en suite shower room. Externally there are mainly level gardens with rural aspect at rear with off road parking for numerous vehicles. The bungalow is Upvc double glazed and gas centrally heated. EPC D 63.

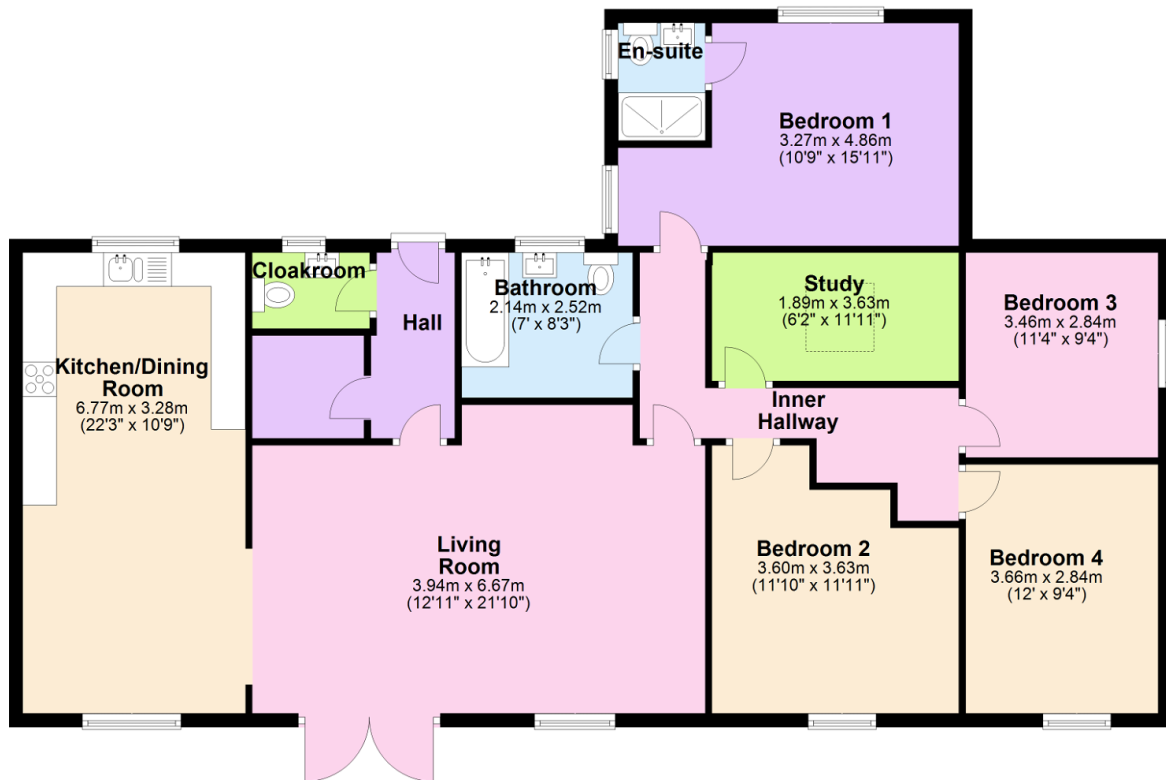


Key Features

- 4 Bedroom Detached Bungalow
- Feature Open Plan Living Room With Wood Burner
- Engineered Oak Flooring to Reception Rooms
- En Suite Shower/WC
- Modern Integrated Kitchen
- Gas Central Heating
- Off Road Parking For Numerous Vehicles
- Small Level Rear Garden With Rural Outlook
- Study
- EPC D 63

Ground Floor

Approx. 141.7 sq. metres (1524.8 sq. feet)



Total area: approx. 141.7 sq. metres (1524.8 sq. feet)