






MILLINGTON TUNNICLIFF

www.millingtontunnickliff.co.uk

Sumner Road, Bittaford, Ivybridge

£177,000

 2  2  1



An immaculate 2 double bedroom residential park home on this popular site on the edge of Bittaford. The property is beautifully presented and offers an entrance hall, spacious lounge/diner, modern integrated kitchen, lobby, the 2 bedrooms, family shower room and en suite. There is a generous plot with 2 car hardstands. The property is Upvc double glazed and gas centrally heated.

01752 896020 | info@millingtontunnickliff.co.uk | 19 Fore Street, Ivybridge, Devon, PL21 9AB



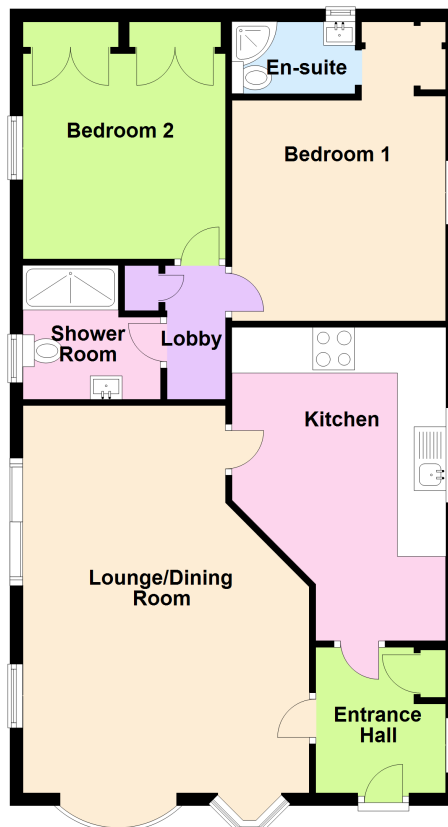
MILLINGTON TUNNICLIFF

www.millingtontunnickliff.co.uk

Key Features

- 2 Double Bedroom Park home
- En suite Shower
- Modern Integrated Kitchen
- Modern Shower Room
- Upvc Double Glazing
- 2 Car Hardstands
-
-

Ground Floor



01752 896020 | info@millingtontunnickliff.co.uk | 19 Fore Street, Ivybridge, Devon, PL21 9AB