




{ CAVALRY COURT 31 BRUMWELL AVENUE SE18  
£2,850 PER MONTH AVAILABLE 07/04/2025

**Hamptons**  
THE HOME EXPERTS

# { THE PARTICULARS

Cavalry Court 31 Brumwell Avenue  
SE18

£2,850 Per Month  
Furnished

 3 Bedrooms  
 2 Bathrooms  
 1 Reception

## Features

- \*These photographs & floorplans demonstrate the layout & finish of an apartment., - Selection of 1, 2 & 3 bedroom apartments available, - The sizes, prices, layouts & finishes of each flat vary.

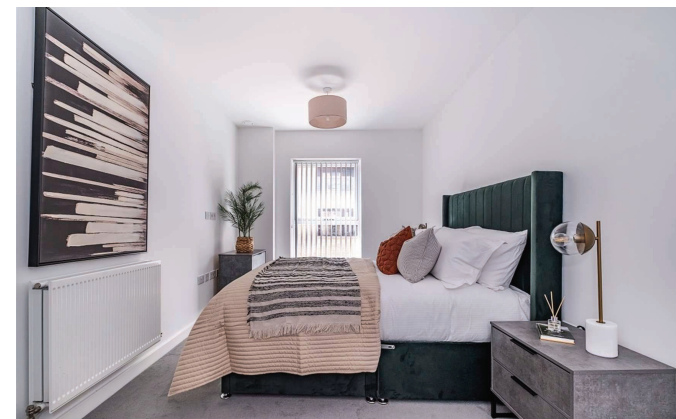
## Council Tax

Council Tax Band E

Hamptons  
11-13 Queen Street  
Maidenhead, SL6 1NB  
02089392370  
HamptonsBTR@hamptons.co.uk  
www.hamptons.co.uk

## The Property

Discover modern urban living in this exceptional three-bedroom apartment, just moments away from Woolwich Arsenal Station. Finished to a high specification, this property offers a blend of style, comfort, and convenience. Spacious Open Plan Living: The large open plan living and kitchen area is perfect for entertaining, featuring modern built-in appliances and plenty of space to relax and dine. Generous Bedrooms: double bedrooms are spacious and feature built-in storage. The dual-access bathroom can be reached from both the communal area and the master bedroom, adding to the apartment's convenience. Private Balcony: Enjoy the added benefit of your very own private balcony, perfect for a morning coffee or unwinding in the evening. Prime Location: Just a few minutes' walk from Woolwich Arsenal National Rail and DLR stations, this apartment is ideal for professionals with easy access to the city center and Canary Wharf. Local Amenities: With a wealth of local amenities right on your doorstep, including shops, restaurants, and cafes, everything you need is within easy reach. Secure Parking: Secure underground parking is available at an additional cost.



**No floor plan currently available**

**For Clarification**

We wish to inform prospective tenants that we have prepared these particulars as a general guide and they have been confirmed as accurate by the landlord. We have not verified permissions, nor carried out a survey, tested the services, appliances and specific fittings. Room sizes are approximate and measurement figures rounded: they are taken between internal wall surfaces and therefore include cupboards/shelves, etc. Accordingly, they should not be relied upon for

carpets and furnishings. It should also be noted that all fixtures and fittings, carpeted, curtains/blinds, kitchen equipment and garden statuary, whether fitted or not, are deemed removable by the landlord unless specifically itemised with these particulars. Please enquire in office or on our website for details on holding deposit and tenancy deposit figures.



