



BURRELLS WHARF SQUARE, E14
£2,100 PER MONTH AVAILABLE 01/06/2024

Hamptons

THE HOME EXPERTS

{ THE PARTICULARS

Burrells Wharf Square, E14

**£2,100 Per Month
Furnished**

 **1 Bedroom**
 **1 Bathroom**
 **1 Reception**

Features

- First Floor, - Warehouse Conversion, - One Bedroom, - Open-Plan Living Room, - Bathroom, - Concierge, - Resident's Gym, - Indoor Pool, - Off-Street Parking, - Council Tax Band D

Council Tax

Council Tax Band D

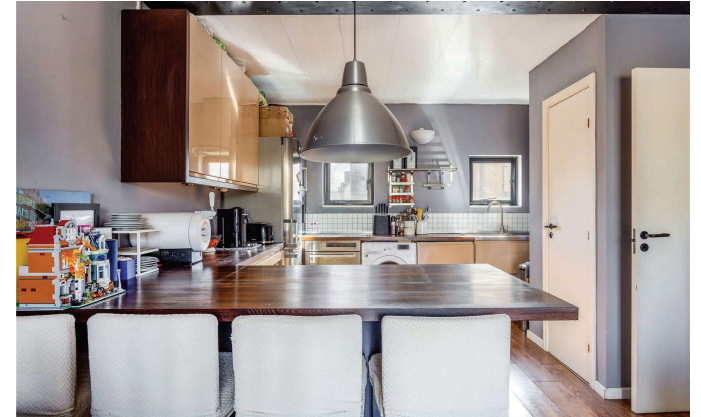
Hamptons

Unit 1, 20 Canada Place
Canary Wharf, London, E14 5NN
020 7346 5802
canarywharflettings@hamptons.co.uk
www.hamptons.co.uk

{ A WELL PRESENTED ONE BEDROOM WAREHOUSE CONVERSION. EPC: C.

The Property

This well presented one bedroom warehouse apartment is situated on the first floor of this building within the historic Burrells Wharf development. The property has been well maintained and offers wooden flooring as well as features such as exposed brickwork. The living room is of a good size and leads onto a balcony perfect for catching that late afternoon sun. The living room is open-plan to a modern kitchen, with breakfast bar. The bedroom offers built-in wardrobes and there is a recently fitted modern bathroom with shower over bath. The property also come with the use of one off-street parking space and the development offers resident's gym and indoor pool as well as 24 hour concierge service. Burrells Wharf is located on the banks of the river Thames and is within approximately 0.4 miles of Mudchute DLR station for access to Canary Wharf and the City. Masthouse Terrace Pier for Uber Boat services is situated just 0.1 miles from the property and offers a leisurely commute to Canary Wharf, the City and Westminster. Close by you will find pubs, restaurants and convenience stores as well as plenty of green space at Millwall Park and Mudchute Park and City Farm.



No floor plan currently available

For Clarification

We wish to inform prospective tenants that we have prepared these particulars as a general guide and they have been confirmed as accurate by the landlord. We have not verified permissions, nor carried out a survey, tested the services, appliances and specific fittings. Room sizes are approximate and measurement figures rounded: they are taken between internal wall surfaces and therefore include cupboards/shelves, etc. Accordingly, they should not be relied upon for

carpets and furnishings. It should also be noted that all fixtures and fittings, carpeted, curtains/blinds, kitchen equipment and garden statuary, whether fitted or not, are deemed removable by the landlord unless specifically itemised with these particulars. Please enquire in office or on our website for details on holding deposit and tenancy deposit figures.

