



Guide Price
£550,000

Freehold

4x  2x  3x 

**Hillcrest Close, Scaynes
Hill, Haywards Heath,
West Sussex, RH17**

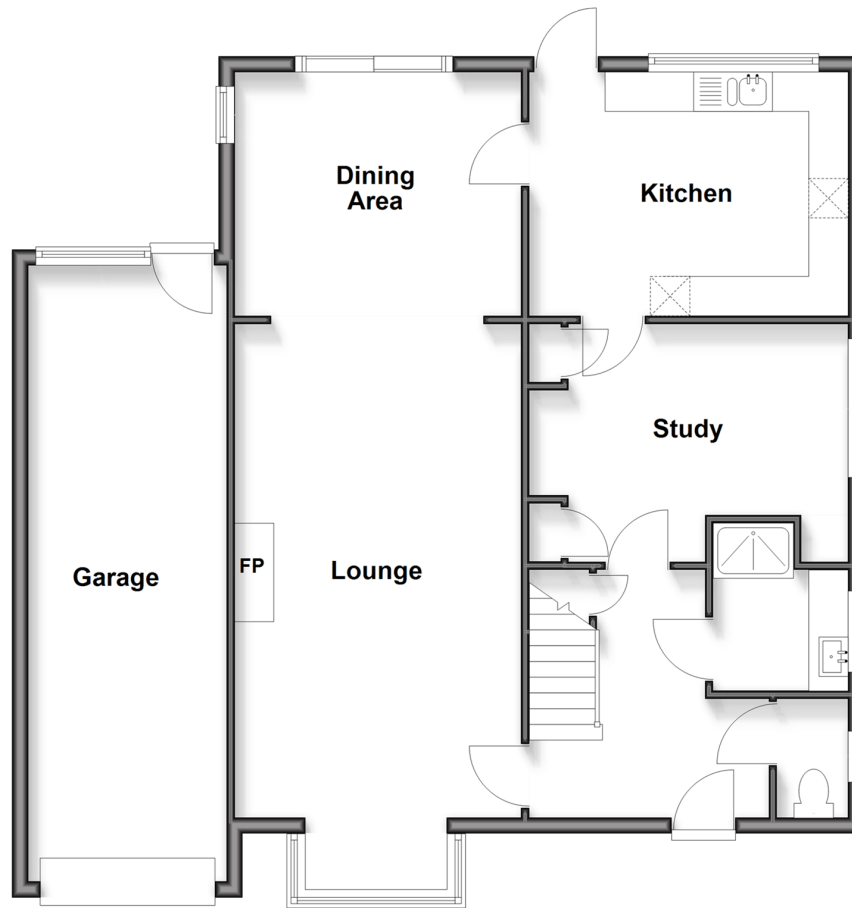
OVER 60?

Secure this property
for up to **59% less!**

cubitt&west
Helping you move forwards

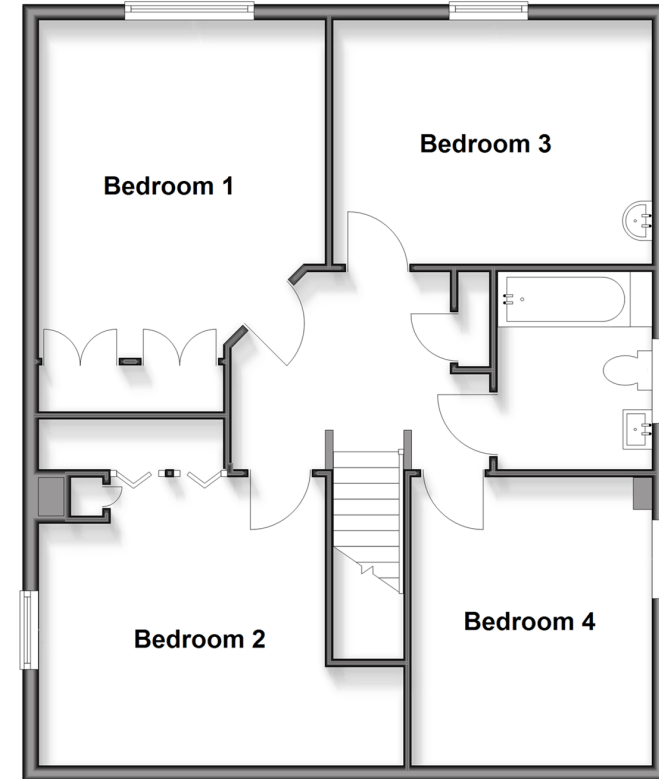
Ground Floor

Approx. 94.9 sq. metres (1022.0 sq. feet)



First Floor

Approx. 73.7 sq. metres (793.6 sq. feet)



Accommodation

GROUND FLOOR

Entrance Hallway

Cloakroom

Lounge: 24'8 x 12'0 (7.52m x 3.66m)

Kitchen: 13'4 x 10'1 (4.07m x 3.08m)

Dining Area: 11'11 x 10'7 (3.63m x 3.23m)

Study: 14'0 x 9'11 (4.27m x 3.02m)

Shower Room

FIRST FLOOR

Landing

Bedroom 1: 15'2 x 12'7 up to fitted wardrobes (4.63m x 3.84m)

Bedroom 2: 14'3 x 11'11 up to fitted wardrobes (4.35m x 3.63m)

Bedroom 3: 13'3 x 10'4 (4.04m x 3.15m)

Bedroom 4: 12'2 x 9'10 (3.71m x 3.00m)

Bathroom

OUTSIDE

Front & Rear Garden

Garage: 27'4 x 8'2 (8.34m x 2.49m)

Off-Road Parking



Main features

- No forward chain
- Garage with an electric door
- The convenience of off-road parking
- Ideal village location with countryside walks on your doorstep
- All double bedrooms
- Luxury of 2 reception rooms and 2 bathrooms
- Secluded rear garden



Nearest Schools

Primary Schools: St Augustine's CofE Primary 0.3 miles, Northlands Wood Community Primary 1.1 miles, St Wilfrid's CofE Primary, Haywards Heath 1.6 miles

Secondary Schools: Chailey Heritage School 1.6 miles,



Transport Information

Train Stations: Haywards Heath 2.3 miles, Wivelsfield 3.2 miles, Burgess Hill 4.0 miles



Address

Hillcrest Close, Scaynes Hill, Haywards Heath, West Sussex, RH17



Directions

For directions to this property please contact us.



cubitt&west
Helping you move forwards

Call Haywards Heath Branch 01444 411132 ■ cubittandwest.co.uk



■ Legal advice should be taken to verify fixtures/fittings, planning, alterations and/or lease details ■ Appliances & services are untested, dimensions are approximate and floor plans are not to scale
■ Through a Homewise Home For Life Plan people aged 60+ can secure this property for up to 50% less, by purchasing a Lifetime Lease.



22706169/20251027/DD/DD