



**Guide Price**  
**£350,000**

**Freehold**

3x  1x  1x 

**Franklynn Road,  
Haywards Heath, West  
Sussex, RH16**

**OVER 60?**

Secure this property  
for up to **59% less!**

**cubitt&west**  
Helping you move forwards





## Main features

- Private driveway at the front of the property
- Fully renovated throughout, including a high-quality loft extension
- Three well-proportioned bedrooms offering flexible living space
- Beautiful rear garden with plenty of space to relax or entertain
- Ideal for first-time buyers or families, with scope to personalise further

## Accommodation

### GROUND FLOOR

Entrance Hallway

Lounge/Dining Room: 21'9 x 10'10 (6.63m x 3.30m)

Kitchen: 14'3 x 6'8 (4.35m x 2.03m)

### FIRST FLOOR

Landing

Bedroom 2: 11'0 x 10'0 (3.36m x 3.05m)

Bedroom 3: 8'0 x 6'11 (2.44m x 2.11m)

Bathroom

Toilet

### SECOND FLOOR

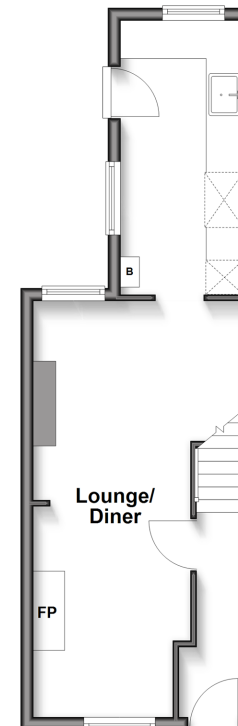
Landing

Bedroom 1: 17'4 x 6'4 (5.29m x 1.93m)

### OUTSIDE

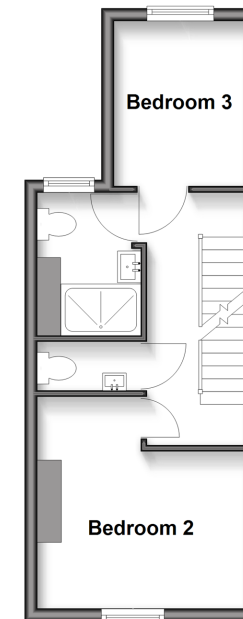
### Split Level Ground Floor

Approx. 30.5 sq. metres (328.8 sq. feet)



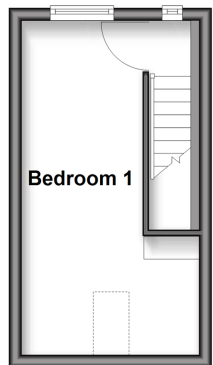
### Split Level First Floor

Approx. 27.7 sq. metres (297.7 sq. feet)



### Second Floor

Approx. 14.9 sq. metres (160.6 sq. feet)



Call Haywards Heath - 01444 411132 ■ [cubittandwest.co.uk](http://cubittandwest.co.uk)

■ Legal advice should be taken to verify fixtures/fittings, planning, alterations and/or lease details  
 ■ Through a Homewise Home For Life Plan people aged 60+ can secure this property for up to 59% less, by purchasing a Lifetime Lease.

■ Appliances & services are untested, dimensions are approximate and floor plans are not to scale



22706144/20250804/DD/BS1