



Price
£835,000

Freehold

4x  2x  1x 

**Champions Place,
Haywards Heath, West
Sussex, RH17**

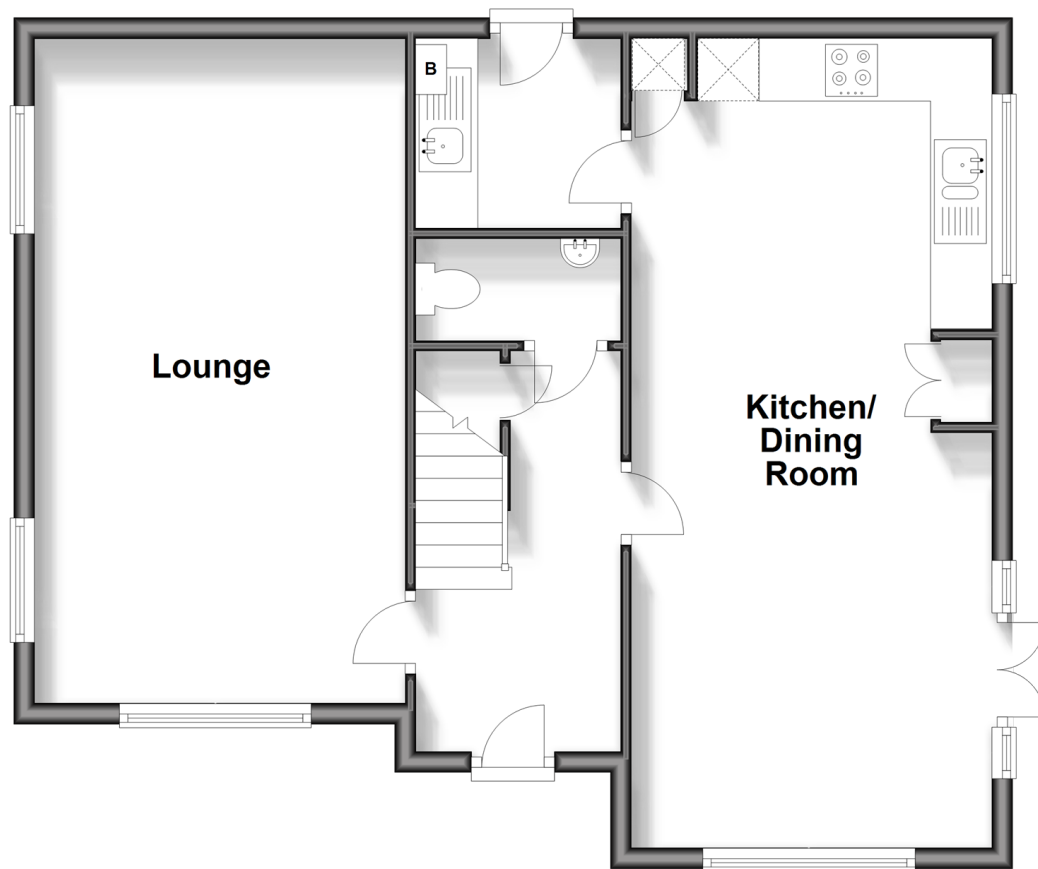
OVER 60?

Secure this property
for up to **59% less!**

cubitt&west
Helping you move forwards

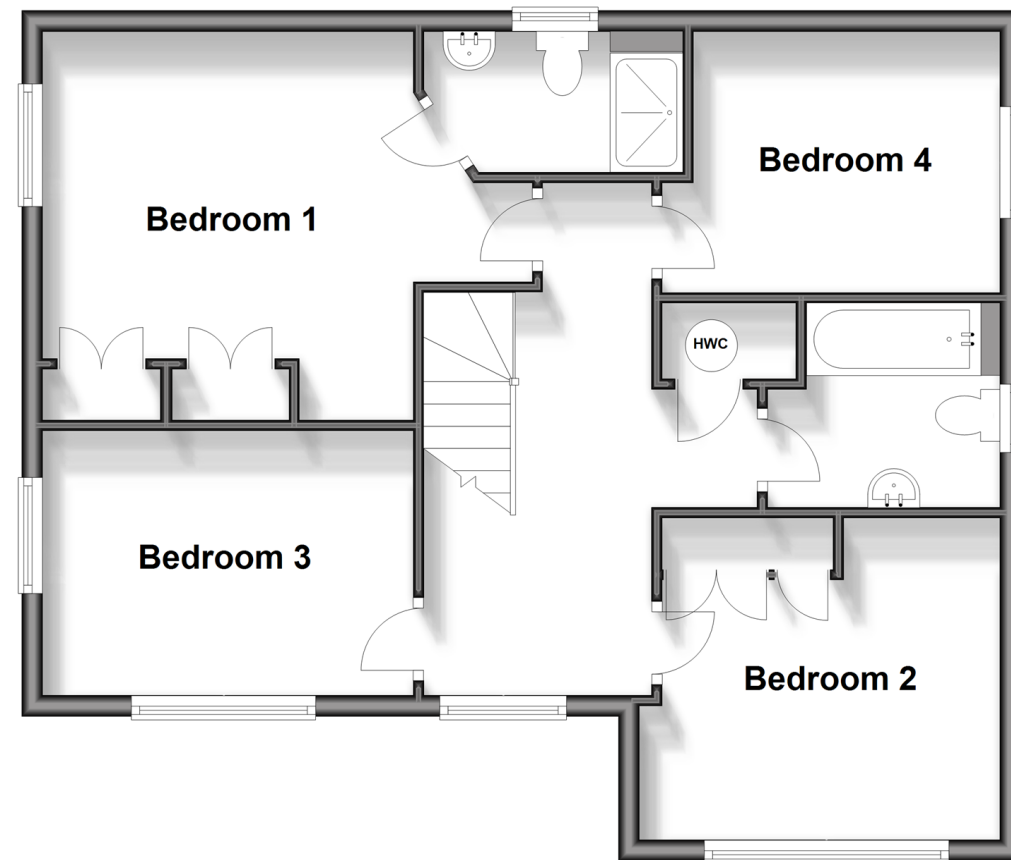
Ground Floor

Approx. 64.7 sq. metres (696.2 sq. feet)



First Floor

Approx. 63.7 sq. metres (685.8 sq. feet)



Accommodation

Entrance Hallway

Cloakroom

Lounge: 21'0 x 11'7 (6.41m x 3.53m)

Kitchen/Dining Room: 25'9 x 11'5
(7.85m x 3.48m)

Utility Room: 6'5 x 5'7 (1.96m x 1.70m)

Landing

Bedroom 1: 16'0 x 12'5 up to fitted
wardrobes (4.88m x 3.79m)

En-Suite Shower Room

Bedroom 2: 11'4 x 10'1 up to fitted
wardrobes (3.46m x 3.08m)

Bedroom 3: 11'10 x 8'4 (3.61m x 2.54m)

Bedroom 4: 9'8 x 8'3 (2.95m x 2.52m)

Bathroom

OUTSIDE

Front & Rear Garden

Garage : 18'10 x 9'8 (5.74m x 2.95m)

Off Road Parking

FIRST FLOOR



Main features

- No forward chain
- Cul-de-sac location
- The convenience of a garage & driveway for parking multiple cars
- All bedrooms are doubles, with two featuring fitted wardrobes
- En-suite shower to one of the bedrooms
- Integral fridge/freezer & dishwasher
- Sunny aspect rear garden



Nearest Schools

Primary Schools: Harlands Primary 0.3 miles, Holy Trinity CofE Primary, Cuckfield 0.9 miles, Blackthorns Community Primary, Lindfield 1.3 miles

Secondary Schools: Warden Park School 1.0 miles, Oathall



Transport Information

Train Stations: Haywards Heath 0.8 miles, Balcombe 2.9 miles, Wivelsfield 3.4 miles



Address

Champions Place, Haywards Heath, West Sussex, RH17



Directions

For directions to this property please contact us.



cubitt&west
Helping you move forwards

Call Haywards Heath Branch 01444 411132 ■ cubittandwest.co.uk



■ Legal advice should be taken to verify fixtures/fittings, planning, alterations and/or lease details ■ Appliances & services are untested, dimensions are approximate and floor plans are not to scale
■ Through a Homewise Home For Life Plan people aged 60+ can secure this property for up to 59% less, by purchasing a Lifetime Lease.



22705392/20250529/DD/DD