

OVER 60?

Secure this property
for up to **59% less!**

Price

£435,000

Freehold

2x  1x  1x 

**Nostel Priory Cottages,
Haywards Heath Road,
Balcombe, Haywards
Heath, West Sussex,**

cubitt&west
Helping you move forwards



Main features

- No forward chain
- Cul-de-sac location
- Woodburner & shutters installed
- Ideally situated a short walk to train station & village shop
- Stunning views from bedroom 2
- The luxury of a secluded rear garden

Accommodation

GROUND FLOOR

Entrance Hallway

Lounge/Diner: 18'10 x 13'10 (5.74m x 4.22m)

Kitchen: 14'4 x 8'11 (4.37m x 2.72m)

FIRST FLOOR

Landing

Bedroom 1: 12'11 x 11'3 up to fitted wardrobes (3.94m x 3.43m)

Bedroom 2: 8'11 x 7'8 (2.72m x 2.34m)

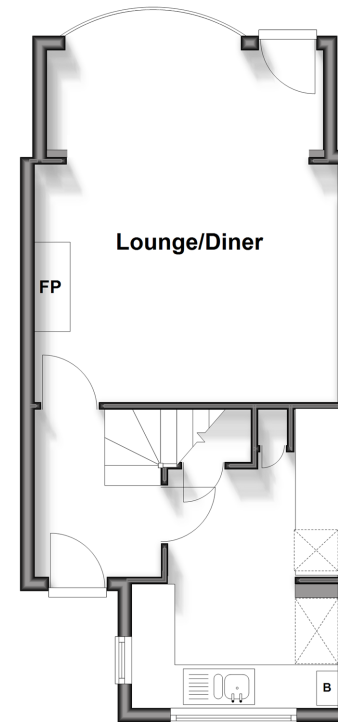
Shower Room

OUTSIDE

Front & Rear Garden

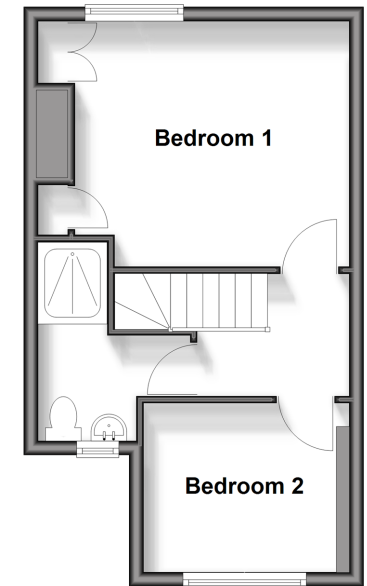
Ground Floor

Approx. 36.4 sq. metres (391.4 sq. feet)



First Floor

Approx. 30.9 sq. metres (333.1 sq. feet)



Call Haywards Heath - 01444 411132 ■ cubittandwest.co.uk

■ Legal advice should be taken to verify fixtures/fittings, planning, alterations and/or lease details
 ■ Through a Homewise Home For Life Plan people aged 60+ can secure this property for up to 59% less, by purchasing a Lifetime Lease.

■ Appliances & services are untested, dimensions are approximate and floor plans are not to scale



22705208/20250411/DD/DD