



OVER 60?

Secure this property
for up to **59% less!**

Price

£215,000

Leasehold

1x  1x  1x 

**Sussex Road, Haywards
Heath, West Sussex,
RH16**

cubitt&west
Helping you move forwards



Main features

- No forward chain
- The convenience of off-road parking for multiple vehicles
- Short walk to train station & town centre
- The luxury of a private rear garden
- Remainder of a 999 year lease

Accommodation

GROUND FLOOR

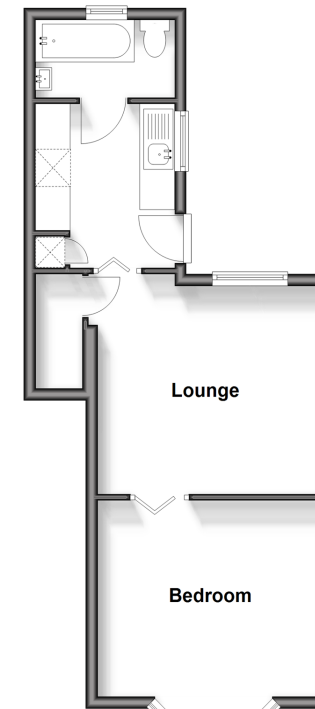
Lounge: 12'5 x 12'0 (3.79m x 3.66m)
 Kitchen: 8'11 x 8'2 (2.72m x 2.49m)
 Bedroom: 12'5 x 12'0 (3.79m x 3.66m)
 Bathroom

OUTSIDE

Rear Garden
 Off-Road Parking

Ground Floor

Approx. 38.1 sq. metres (410.4 sq. feet)



Call Haywards Heath - 01444 411132 ■ cubittandwest.co.uk

■ Legal advice should be taken to verify fixtures/fittings, planning, alterations and/or lease details
 ■ Through a Homewise Home For Life Plan people aged 60+ can secure this property for up to 59% less, by purchasing a Lifetime Lease.

■ Appliances & services are untested, dimensions are approximate and floor plans are not to scale