



Guide Price
£550,000

Freehold

3x  2x  1x 

**Cheales Close,
Haywards Heath, West
Sussex, RH16**

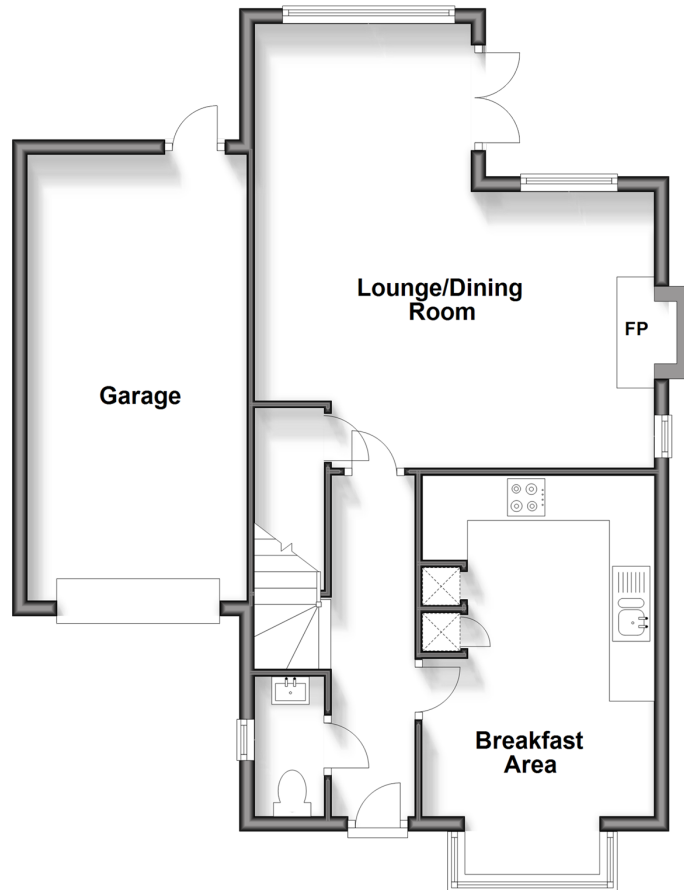
OVER 60?

Secure this property
for up to **59% less!**

cubitt&west
Helping you move forwards

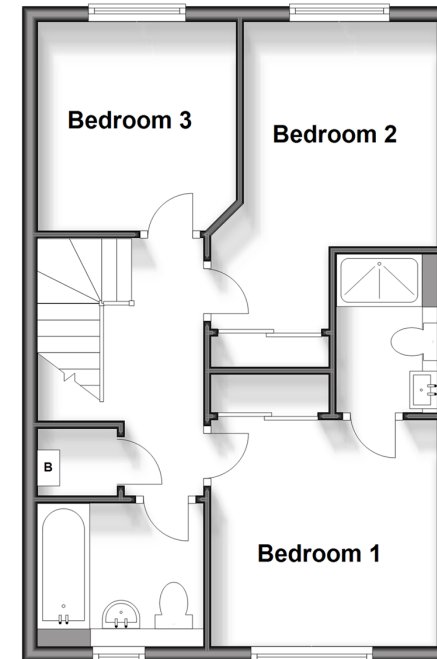
Ground Floor

Approx. 69.8 sq. metres (751.6 sq. feet)



First Floor

Approx. 44.6 sq. metres (479.6 sq. feet)



Accommodation

GROUND FLOOR

Hallway

Cloakroom

Lounge / Dining Room: 19'7 x 17'8
(5.97m x 5.39m)

Kitchen / Breakfast Room: 18'8 x 10'3
(5.69m x 3.13m)

FIRST FLOOR

Landing

Bedroom 1: 10'2 x 9'10 up to fitted
wardrobes (3.10m x 3.00m)

En-Suite Shower Room

Bedroom 2: 13'6 x 10'2 at widest point
(4.12m x 3.10m)

Bedroom 3: 9'6 at widest point x 8'4
(2.90m x 2.54m)

Bathroom

OUTSIDE

Garage: 19'11 x 9'8 (6.07m x 2.95m)

Off-Road Parking

Front & Rear Garden



Main features

- Modern link-detached home in a peaceful cul-de-sac location
- The convenience of a garage and off-road parking
- Stunning views of the South Downs
- Integral washer/dryer, fridge/freezer, and dishwasher
- Cosy open fireplace in the living room
- All bedrooms are generously sized doubles



Nearest Schools

Primary Schools: St Joseph's Catholic Primary, Haywards Heath 0.9 miles, St Wilfrid's CofE Primary, Haywards Heath 1.0 miles, Heyworth Primary 1.1 miles

Secondary Schools: Oathall Community College 1.5 miles,



Transport Information

Train Stations: Haywards Heath 1.3 miles, Wivelsfield 1.5 miles, Burgess Hill 2.4 miles



Address

Cheales Close, Haywards Heath, West Sussex, RH16



Directions

For directions to this property please contact us.



cubitt&west
Helping you move forwards

Call Haywards Heath Branch 01444 411132 ■ cubittandwest.co.uk



- Legal advice should be taken to verify fixtures/fittings, planning, alterations and/or lease details
- Appliances & services are untested, dimensions are approximate and floor plans are not to scale
- Through a Homewise Home For Life Plan people aged 60+ can secure this property for up to 59% less, by purchasing a Lifetime Lease.



22705368/20250319/MG/DD