



Guide Price
£900,000

Freehold

4x  3x  3x 

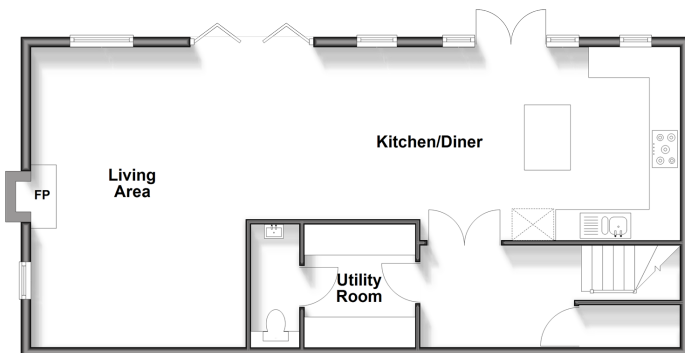
**Southern View,
Haywards Heath, West
Sussex, RH16**

OVER 60?

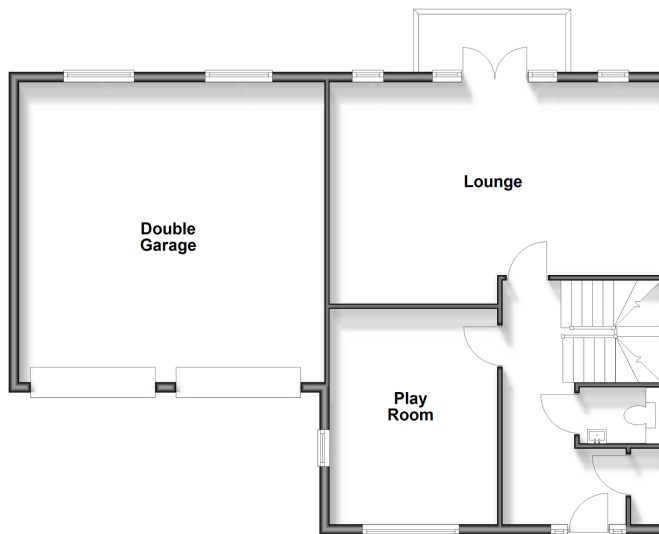
Secure this property
for up to **59% less!**

cubitt&west
Helping you move forwards

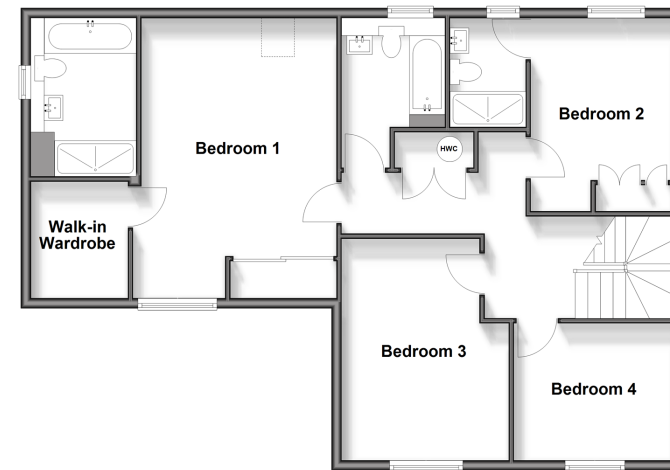
Lower Ground Floor
Approx. 75.6 sq. metres (814.3 sq. feet)



Ground Floor
Approx. 93.0 sq. metres (1000.8 sq. feet)



First Floor
Approx. 90.6 sq. metres (974.9 sq. feet)



Accommodation

LOWER GROUND FLOOR

Landing
Kitchen/Diner: 28'8 x 12'3 (8.74m x 3.74m)
Living Area: 19'4 x 13'3 (5.90m x 4.04m)
Utility Room: 8'0 x 7'2 (2.44m x 2.19m)
Toilet

Lounge: 21'4 x 12'5 (6.51m x 3.79m)
Balcony
Playroom: 14'0 x 10'8 (4.27m x 3.25m)
Cloakroom

FIRST FLOOR

Landing
Bedroom 1: 17'9 x 12'9 up to fitted wardrobes (5.41m x 3.89m)

Walk-in Wardrobe
En-Suite Bath & Shower Room
Bedroom 2: 12'8 x 9'1 (3.86m x 2.77m)
En-Suite Bathroom
Bedroom 3: 14'4 x 9'1 at widest point (4.37m x 2.77m)
Bedroom 4: 10'4 x 8'10 (3.15m x 2.69m)
Bathroom

OUTSIDE

Double Garage: 19'10 x 19'8 (6.05m x 6.00m)
Off-Road Parking
Front & Rear Garden

GROUND FLOOR

Entrance Hallway



Main features

- The convenience of a double garage & off-road parking
- Large kitchen with integral appliances
- Family room with the luxury of a wood burner
- Lounge with sunny facing balcony
- All bedrooms are doubles
- Two en-suite bathrooms
- Sunny aspect facing garden
- Garden office with under floor heating



Nearest Schools

Primary Schools: St Joseph's Catholic Primary, Haywards Heath 1.0 miles, St Wilfrid's CofE Primary, Haywards Heath 1.1 miles, Northlands Wood Primary Academy 2.0 miles



Transport Information

Train Stations: Haywards Heath 1.4 miles, Wivelsfield 1.4 miles, Burgess Hill 2.2 miles



Address

Southern View, Haywards Heath, West Sussex, RH16



Directions

For directions to this property please contact us.



cubitt&west
Helping you move forwards

Call Haywards Heath Branch 01444 411132 ■ cubittandwest.co.uk



■ Legal advice should be taken to verify fixtures/fittings, planning, alterations and/or lease details ■ Appliances & services are untested, dimensions are approximate and floor plans are not to scale
■ Through a Homewise Home For Life Plan people aged 60+ can secure this property for up to 59% less, by purchasing a Lifetime Lease.



22705974/20250311/MG/DD