



Guide Price
£300,000

Freehold

2x  1x  1x 

**Windmill Platt,
Handcross, Haywards
Heath, West Sussex,
RH17**

OVER 60?

Secure this property
for up to **59% less!**

cubitt&west
Helping you move forwards



Main features

- Located in the desirable village of Handcross
- The convenience of off-road parking
- Easy A23 access for commuters
- Beautifully landscaped rear garden
- Great potential to personalise and put your own stamp on it
- Close to local shops, amenities and countryside walks

Accommodation

GROUND FLOOR

Entrance Hallway

Lounge: 20'8 x 12'9 (6.30m x 3.89m)

Kitchen: 8'1 x 5'10 (2.47m x 1.78m)

Dining Area: 8'4 x 6'8 (2.54m x 2.03m)

FIRST FLOOR

Landing

Bedroom 1: 9'2 x 9'1 (2.80m x 2.77m)

Bedroom 2: 8'7 x 8'1 (2.62m x 2.47m)

Bathroom

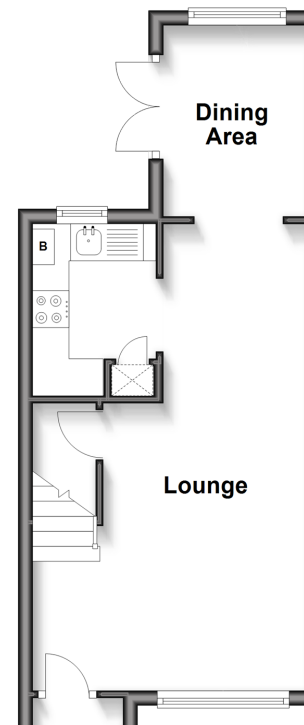
OUTSIDE

Front & Rear Garden

2 x Allocated Parking Spaces

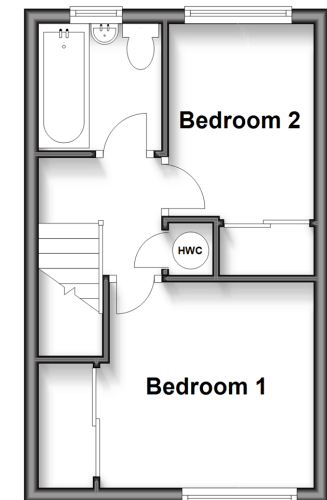
Ground Floor

Approx. 30.9 sq. metres (332.3 sq. feet)



First Floor

Approx. 23.8 sq. metres (256.5 sq. feet)



Call Haywards Heath - 01444 411132 ■ cubittandwest.co.uk

■ Legal advice should be taken to verify fixtures/fittings, planning, alterations and/or lease details
 ■ Through a Homewise Home For Life Plan people aged 60+ can secure this property for up to 59% less, by purchasing a Lifetime Lease.

■ Appliances & services are untested, dimensions are approximate and floor plans are not to scale



22706020/20250725/BS1/BS1