



**Guide Price**  
**£650,000**

**Freehold**

4x  2x  2x 

**Beech Hurst Close,  
Haywards Heath, West  
Sussex, RH16**

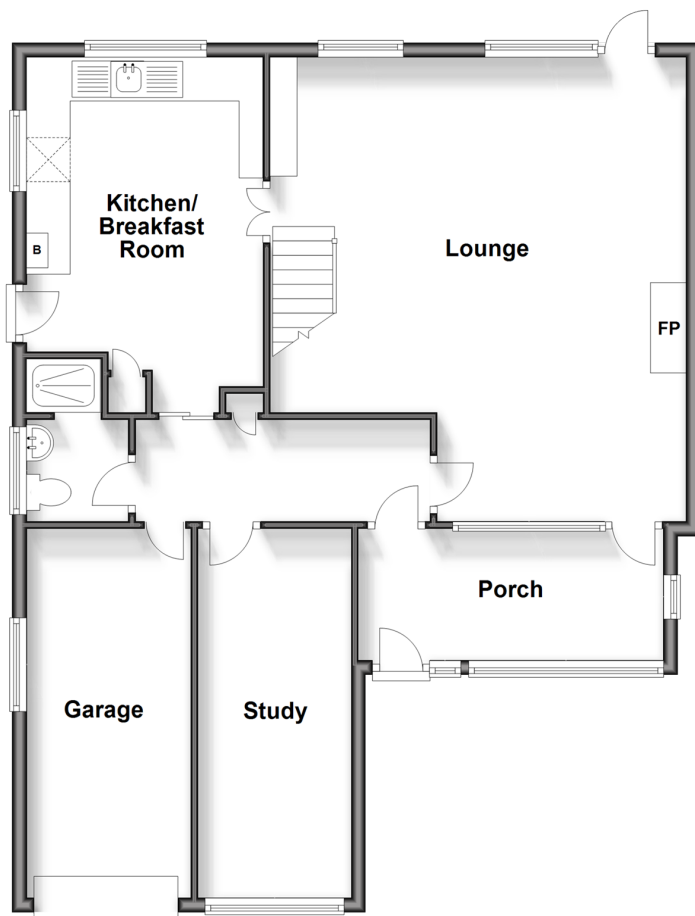
**OVER 60?**

Secure this property  
for up to **59% less!**

**cubitt&west**  
Helping you move forwards

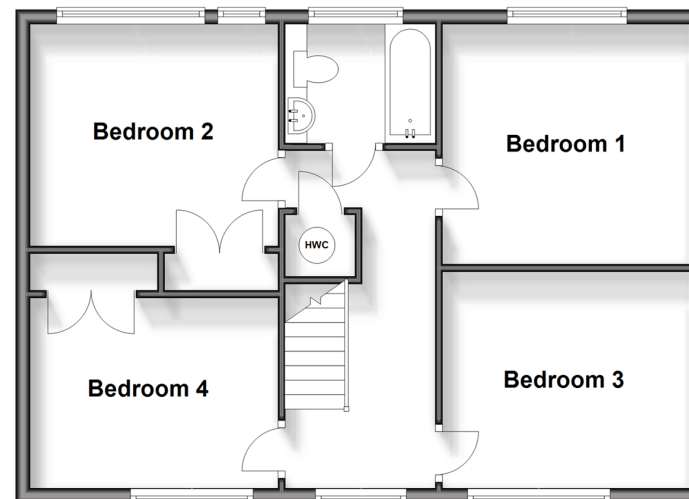
## Ground Floor

Approx. 91.0 sq. metres (979.3 sq. feet)



## First Floor

Approx. 59.1 sq. metres (636.0 sq. feet)



## Accommodation

### GROUND FLOOR

Porch: 13'11 x 6'6 (4.24m x 1.98m)

Entrance Hallway

Lounge: 21'11 x 19'0 (6.68m x 5.80m)

Kitchen/Breakfast Room: 16'2 x 10'6  
(4.93m x 3.20m)

Study: 16'3 x 6'11 (4.96m x 2.11m)

Shower Room

### FIRST FLOOR

Landing

Bedroom 1: 11'4 x 10'11 (3.46m x 3.33m)

Bedroom 2: 11'3 x 9'0 up to fitted  
wardrobes (3.43m x 2.75m)

Bedroom 3: 11'3 x 10'1 (3.43m x 3.08m)

Bedroom 4: 11'3 x 10'0 up to fitted  
wardrobes (3.43m x 3.05m)

Bathroom

### OUTSIDE

Front & Rear Garden

Garage: 16'8 x 7'6 (5.08m x 2.29m)

Off Road Parking





## Main features

- No forward chain
- The convenience of an integral garage with electric door & off-road parking
- Current owner has lived here for 57 years
- Located in a cul-de-sac, within walking distance to train station & town centre
- Featuring parquet flooring on ground floor under carpets
- All bedrooms are doubles



### Nearest Schools

Primary Schools: St Joseph's Catholic Primary, Haywards Heath 0.5 miles, St Wilfrid's CofE Primary, Haywards Heath 0.9 miles

Secondary Schools: Warden Park School 0.9 miles, Oathall



### Transport Information

Train Stations: Haywards Heath 0.5 miles, Wivelsfield 2.3 miles, Burgess Hill 3.1 miles



### Address

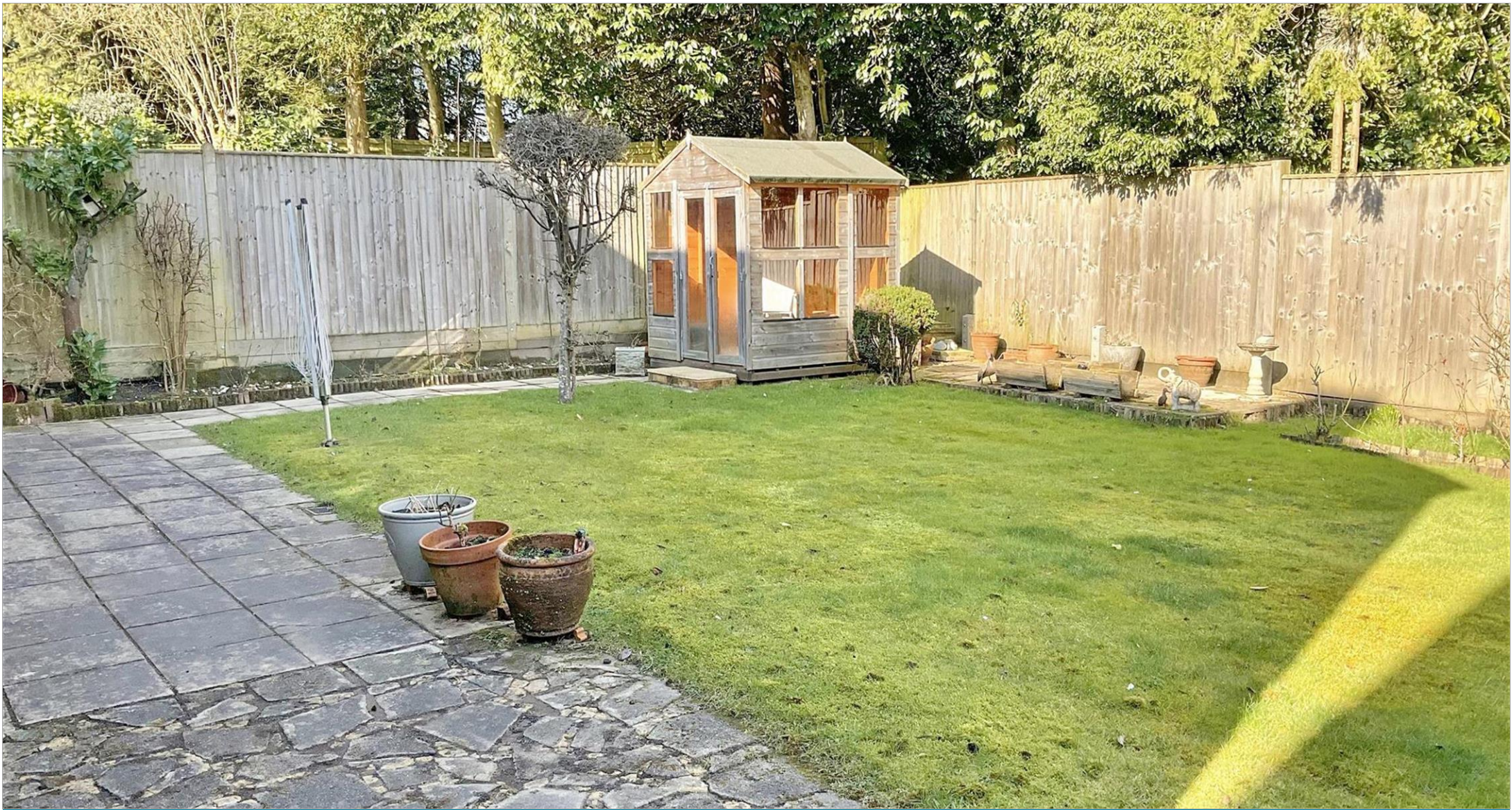
Beech Hurst Close, Haywards Heath, West Sussex, RH16



### Directions

For directions to this property please contact us.





**cubitt&west**  
Helping you move forwards

Call Haywards Heath Branch 01444 411132 ■ [cubittandwest.co.uk](https://cubittandwest.co.uk)



■ Legal advice should be taken to verify fixtures/fittings, planning, alterations and/or lease details ■ Appliances & services are untested, dimensions are approximate and floor plans are not to scale  
■ Through a Homewise Home For Life Plan people aged 60+ can secure this property for up to 59% less, by purchasing a Lifetime Lease.



22705948/20250303/MG/DD