



OVER 60?

Secure this property
for up to **59% less!**

Guide Price

£440,000

Freehold

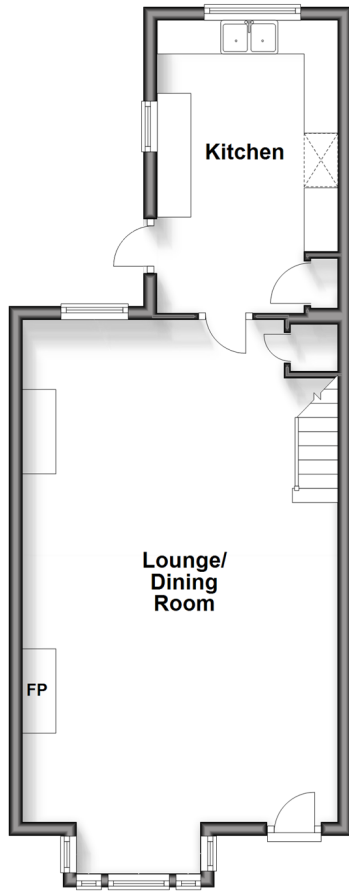
3x  1x  1x 

**Hillbrow, Haywards
Heath Road, North
Chailey, Lewes, East
Sussex, BN8**

cubitt&west
Helping you move forwards

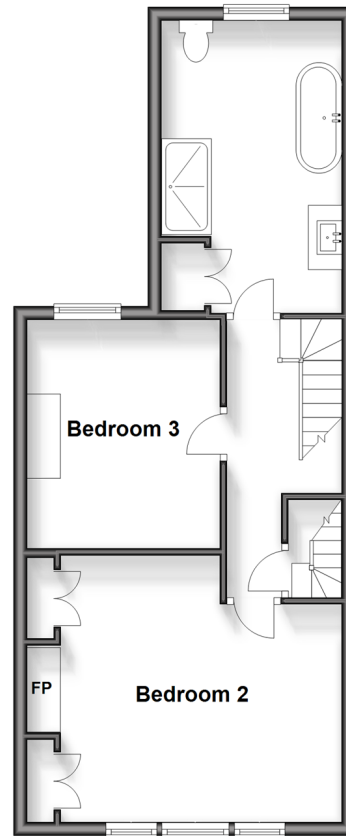
Ground Floor

Approx. 48.3 sq. metres (520.1 sq. feet)



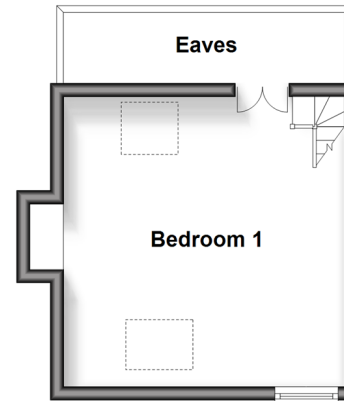
First Floor

Approx. 46.9 sq. metres (504.9 sq. feet)



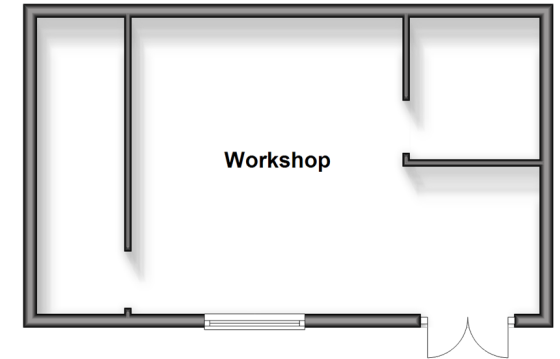
Second Floor

Approx. 18.5 sq. metres (199.1 sq. feet)



Outbuilding

Approx. 33.0 sq. metres (354.7 sq. feet)



Accommodation

GROUND FLOOR

Entrance Hallway

Lounge/Dining Room: 27'4 x 15'4
(8.34m x 4.68m)

Kitchen: 14'0 x 8'11 (4.27m x 2.72m)

FIRST FLOOR

Landing

Bedroom 2: 14'2 x 12'9 up to fitted
wardrobes (4.32m x 3.89m)

Bedroom 3: 10'11 x 9'6 (3.33m x 2.90m)

Bathroom

SECOND FLOOR

Bedroom 1: 14'1 x 13'10 (4.30m x
4.22m)

OUTSIDE

Workshop: 19'11 x 13'7 (6.07m x 4.14m)

Off-Road Parking

Front & Rear Garden



Main features

- All bedrooms are doubles
- Wood burner for efficient warmth
- Within short distance to Chailey Common which is like a mini New Forest with ponies wandering around
- Secluded rear garden
- Work shop which could be a garden office or annexe
- The convenience of off road parking



Nearest Schools

Primary Schools: Chailey St Peter's C of E Primary 1.1 miles, Newick C of E Primary 1.7 miles, St Augustine's CofE Primary 2.5 miles.

Secondary Schools: Chailey Heritage School 0.5 miles,



Transport Information

Train Stations: Plumpton 4.1 miles, Wivelsfield 5.3 miles, Haywards Heath 5.9 miles



Address

Hillbrow, Haywards Heath Road, North Chailey, Lewes, East Sussex, BN8



Directions

For directions to this property please contact us.



cubitt&west
Helping you move forwards

Call Haywards Heath Branch 01444 411132 ■ cubittandwest.co.uk



■ Legal advice should be taken to verify fixtures/fittings, planning, alterations and/or lease details ■ Appliances & services are untested, dimensions are approximate and floor plans are not to scale
■ Through a Homewise Home For Life Plan people aged 60+ can secure this property for up to 59% less, by purchasing a Lifetime Lease.



22705937/20250403/DD/DD