



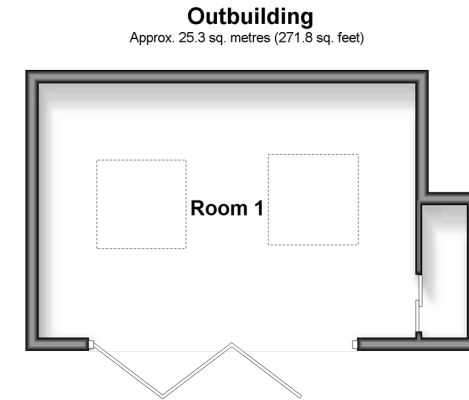
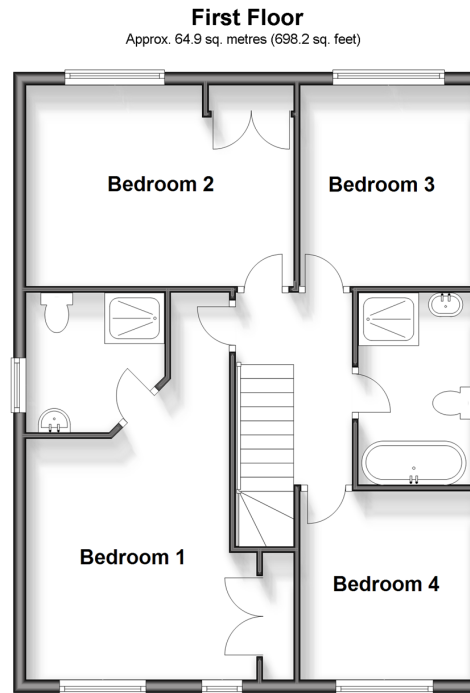
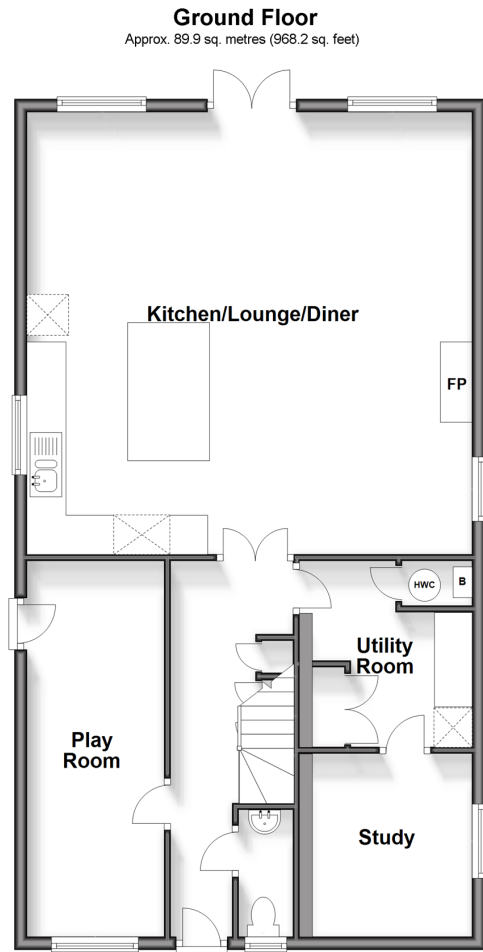
**Price**  
**£750,000**

**Freehold**

4x  2x  3x 

**Nightingale Close,  
Haywards Heath, West  
Sussex, RH16**

**cubitt & west**  
Helping you move forwards



## Accommodation

### GROUND FLOOR

Entrance Hallway

Cloakroom

Kitchen/Lounge/Diner: 23'2 x 23'0  
(7.07m x 7.02m)

Utility Room: 9'5 x 8'3 (2.87m x 2.52m)

Playroom: 19'1 x 7'1 (5.82m x 2.16m)

Study: 8'9 x 8'2 (2.67m x 2.49m)

### FIRST FLOOR

Landing

Bedroom 1: 19'9 x 11'10 up to fitted wardrobes (6.02m x 3.61m)

En-Suite Shower Room

Bedroom 2: 14'1 x 10'4 up to fitted wardrobes (4.30m x 3.15m)

Bedroom 3: 10'4 x 9'5 (3.15m x 2.87m)

Bedroom 4: 9'7 x 9'3 (2.92m x 2.82m)

Bathroom

### OUTSIDE

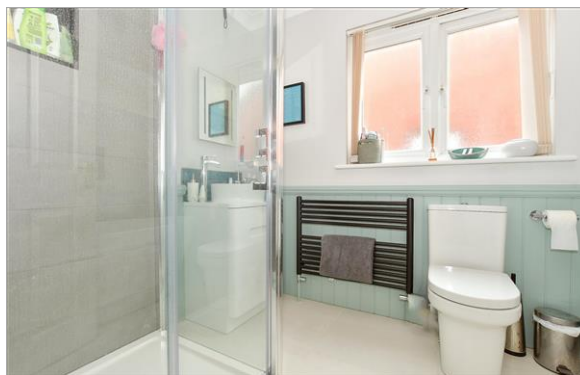
Carport : 16'7 x 13'5 (5.06m x 4.09m)

Off Road Parking

Front & Rear Garden

Outbuilding: 19'7 x 13'0 (5.97m x 3.97m)

Shed: 11'8 x 9'4 (3.56m x 2.85m)



## Main features

- Cul-de-sac location
- Open plan living
- Wood burner
- All of the bedrooms are doubles with one featuring an en-suite
- The convenience of a carport and off-road parking for multiple vehicles
- Sunny aspect rear garden
- Large outbuilding with swim spa

## Nearest Schools

Primary Schools: St Wilfrid's CofE Primary, Haywards Heath 0.0 miles, St Joseph's Catholic Primary, Haywards Heath 0.3 miles, Warden Park Primary Academy 0.8 miles

Secondary Schools: Oathall Community College 0.7 miles,

## Transport Information

Train Stations: Haywards Heath 1.3 miles, Wivelsfield 3.1 miles, Burgess Hill 4.1 miles

## Address

Nightingale Close, Haywards Heath, West Sussex, RH16

## Directions

For directions to this property please contact us.



**cubitt&west**  
Helping you move forwards

Call Haywards Heath Branch 01444 411132 ■ [cubittandwest.co.uk](https://www.cubittandwest.co.uk)



■ Legal advice should be taken to verify fixtures/fittings, planning, alterations and/or lease details ■ Appliances & services are untested, dimensions are approximate and floor plans are not to scale

22705924/20240925/MG/DD