



Price

£300,000

Freehold

2x  2x  1x 

Kings Mews, South
Street, Cuckfield,
Haywards Heath, West
Sussex, RH17

OVER 60?

Secure this property
for up to **59% less!**

cubitt & west
Helping you move forwards



Main features

- No forward chain
- Grade 2 listed
- Ideally located within the village with a short walk to the shops
- The luxury of open plan living with a lounge, kitchen and dining room
- Allocated parking space
- Rear garden

Accommodation

GROUND FLOOR

- Entrance Hallway
- Cloakroom
- Kitchen/Lounge/Diner: 22'9 x 22'7 (6.94m x 6.89m)
- Utility Room
- Bedroom 1: 12'3 x 10'5 (3.74m x 3.18m)
- En-Suite Shower Room

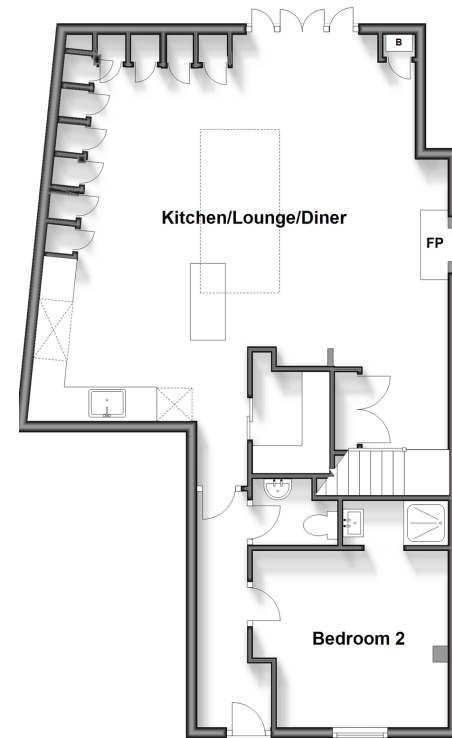
SECOND FLOOR

- Bedroom 2: 13'9 x 7'8 (4.19m x 2.34m)
- En Suite Shower Room

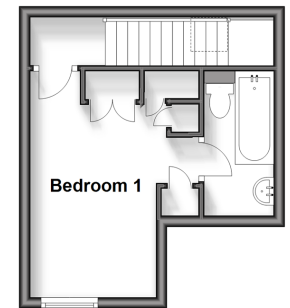
OUTSIDE

- Rear Garden
- Allocated Parking Space

Ground Floor
Approx. 74.5 sq. metres (801.5 sq. feet)



First Floor
Approx. 19.2 sq. metres (206.5 sq. feet)



Call Haywards Heath - 01444 411132 ■ cubittandwest.co.uk

■ Legal advice should be taken to verify fixtures/fittings, planning, alterations and/or lease details
 ■ Through a Homewise Home For Life Plan people aged 60+ can secure this property for up to 59% less, by purchasing a Lifetime Lease.

■ Appliances & services are untested, dimensions are approximate and floor plans are not to scale



22705838/20241101/DD/DD