



**Price**

**£175,000**

**Leasehold**

2x  1x  1x 

**Park West, Southdowns  
Park, Haywards Heath,  
West Sussex, RH16**

**cubitt&west**  
Helping you move forwards





## Main features

- No forward chain
- Large storage cupboard in hallway
- Both bedrooms are doubles
- Allocated parking space
- Access to gym and communal gardens

## Accommodation

### GROUND FLOOR

Entrance Hallway

Lounge/Dining Room: 17'3 x 11'9 (5.26m x 3.58m)

Kitchen: 8'6 x 6'9 (2.59m x 2.06m)

Bedroom 1: 11'7 x 10'7 (3.53m x 3.23m)

Bedroom 2 : 10'1 x 8'7 (3.08m x 2.62m)

Bathroom

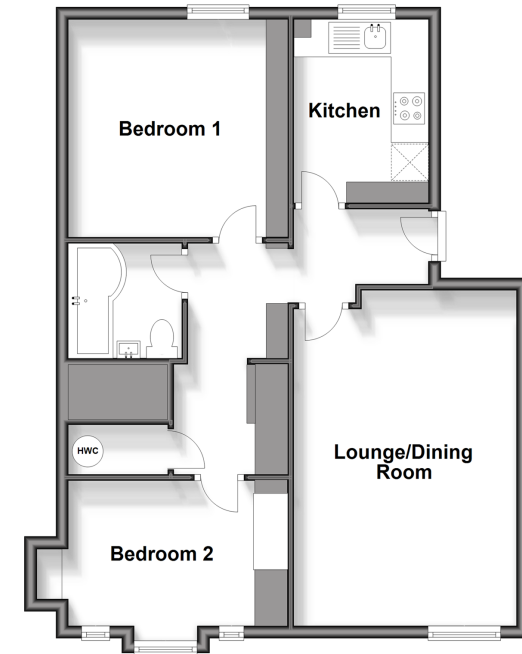
### OUTSIDE

Allocated Parking Space

Communal Garden

### Split Level Ground Floor

Approx. 64.7 sq. metres (695.9 sq. feet)



**Call Haywards Heath - 01444 411132 ■ [cubittandwest.co.uk](http://cubittandwest.co.uk)**

■ Legal advice should be taken to verify fixtures/fittings, planning, alterations and/or lease details

■ Appliances & services are untested, dimensions are approximate and floor plans are not to scale



22705848/20241030/DD/DD