



**Guide Price**  
**£600,000**

**Freehold**

4x  2x  3x 

**Keymer Road, Burgess  
Hill, West Sussex, RH15**

**OVER 60?**

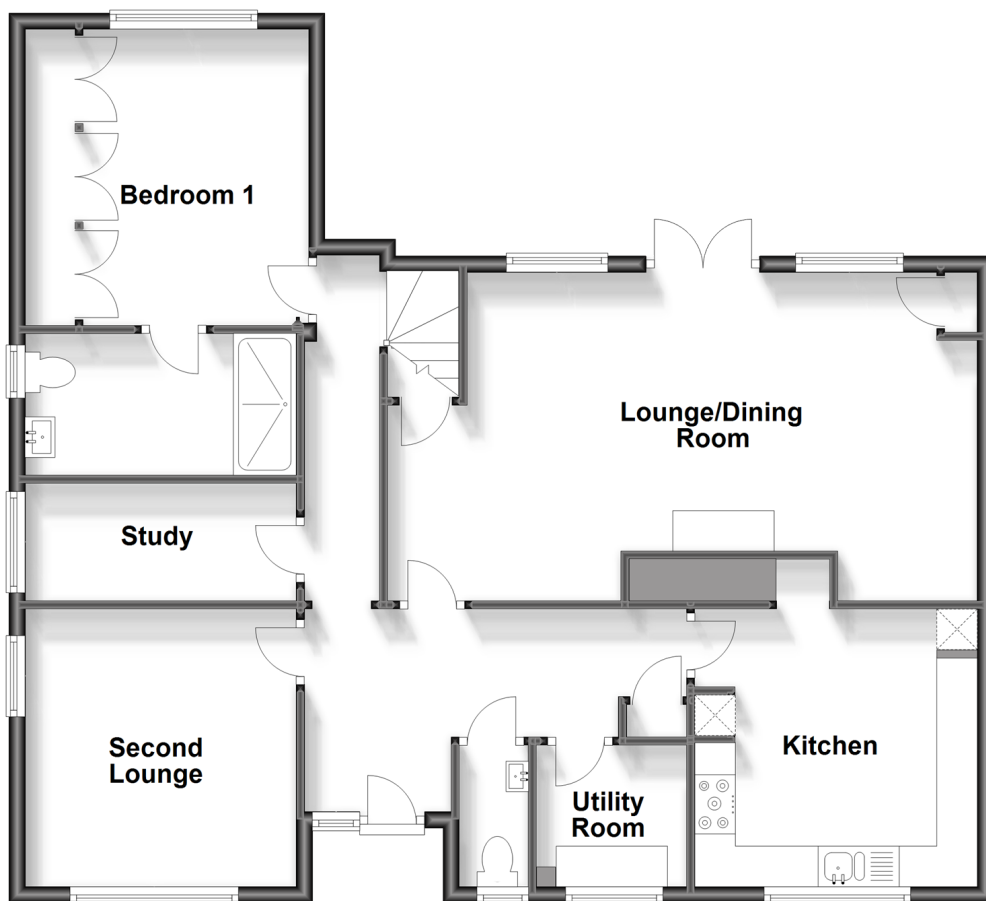
Secure this property  
for up to **59% less!**

**cubitt & west**  
Helping you move forwards



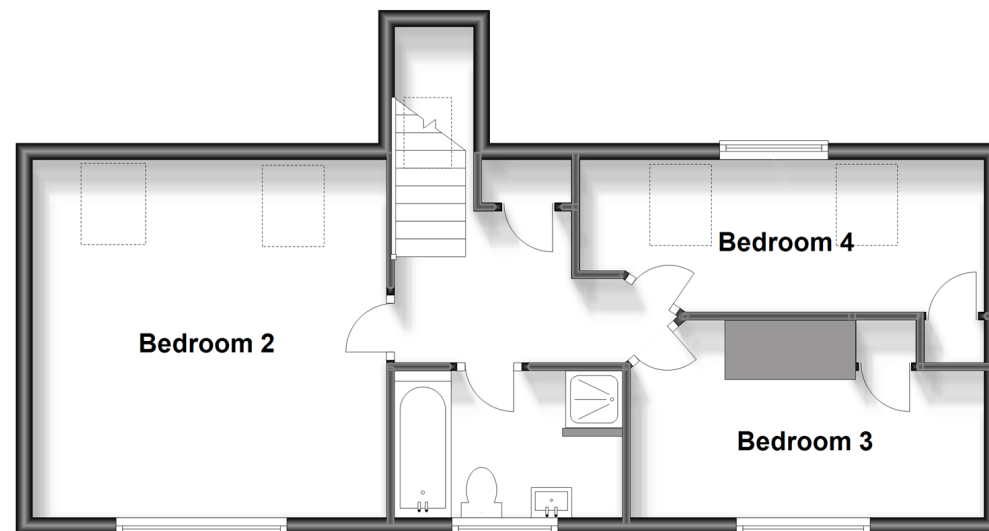
## Ground Floor

Approx. 97.8 sq. metres (1052.9 sq. feet)



## First Floor

Approx. 53.4 sq. metres (574.8 sq. feet)



## Accommodation

### GROUND FLOOR

Hallway

Cloakroom

Utility Room: 6'4 x 5'8 (1.93m x 1.73m)

Kitchen: 12'1 x 11'0 (3.69m x 3.36m)

Second Lounge: 11'5 x 10'11 (3.48m x 3.33m)

Lounge/Dining Room: 23'11 x 14'0 (7.29m x 4.27m)

Study: 10'11 x 4'10 (3.33m x 1.47m)

Bedroom 1: 12'4 x 12'1 (3.76m x 3.69m)

En-Suite Shower Room

### FIRST FLOOR

Landing

Bedroom 2: 15'1 x 14'6 (4.60m x 4.42m)

Bedroom 3: 14'3 x 8'0 (4.35m x 2.44m)

Bedroom 4: 16'2 x 6'2 (4.93m x 1.88m)

Bathroom

### OUTSIDE

Front & Rear Garden

Off-Road Parking



## Main features

- Has a real cottage feel with latch doors throughout.
- Walking distance to train station & town centre
- Current vendors have done extensive renovations to the property
- They have replaced all the front windows, new radiators, new patio and re-plastered
- Secluded rear garden and off-road parking for 4 cars



### Nearest Schools

Primary Schools: Birchwood Grove Community Primary, Burgess Hill 0.3 miles, London Mead Community Primary 0.3 miles, St Wilfrid's Catholic Primary, Burgess Hill 0.7 miles



### Transport Information

Train Stations: Burgess Hill 0.4 miles, Wivelsfield 1.2 miles, Hassocks 1.7 miles



### Address

Keymer Road, Burgess Hill, West Sussex, RH15



### Directions

For directions to this property please contact us.





**cubitt&west**  
Helping you move forwards

Call Haywards Heath Branch 01444 411132 ■ [cubittandwest.co.uk](https://www.cubittandwest.co.uk)



- Legal advice should be taken to verify fixtures/fittings, planning, alterations and/or lease details
- Appliances & services are untested, dimensions are approximate and floor plans are not to scale
- Through a Homewise Home For Life Plan people aged 60+ can secure this property for up to 59% less, by purchasing a Lifetime Lease.

EPC RATING

CURRENT:	POTENTIAL:
D(61)	B(82)

22705623/20231204/DD/DD