



BUNGALOW TWO

THE WOODLANDS, FRIDAY LANE, BARSTON B92 0HZ

ASKING PRICE OF £1,750,000



- »X Two Bedroom Bungalow
- »X Finished To A High Specification
- »X Large Breakfast Kitchen

- »X Living Room
- »X Two Double Bedrooms
- »X Shower Room

- »X Double Glazed Throughout
- »X Private Parking
- »X Views To Open Fields

PROPERTY OVERVIEW

This two double bedroom bungalow occupies a private location within The Woodlands and benefits from its own private gated entrance, gravelled driveway and views to open fields. Internally the bungalow is finished to a high specification throughout and benefits from a living room, large breakfast kitchen, two double bedrooms and shower room. Additionally, the property benefits from double glazed windows throughout and LPG Gas Central Heating.

PROPERTY LOCATION

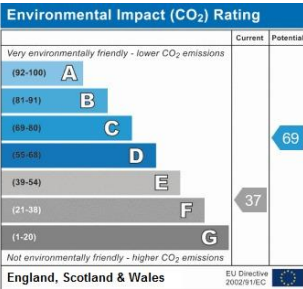
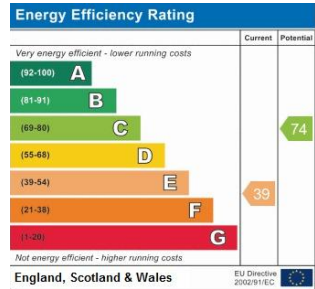
The property resides on the outskirts of Solihull and is conveniently situated near to the delightful villages of Barston and Knowle. Solihull town centre is approximately one mile away as is Birmingham International Station and Airport. In addition, the property is located a short drive from Junction 5 and 6 of the M42 providing main road links to both North and South of the country via the M42 / M6 and M42 / M40. The excellent shopping facilities of Solihull are located close by containing many exclusive shops, boutiques and household names such as John Lewis and House of Fraser. Birmingham International Airport is also located close to Junction 6 of the M42.

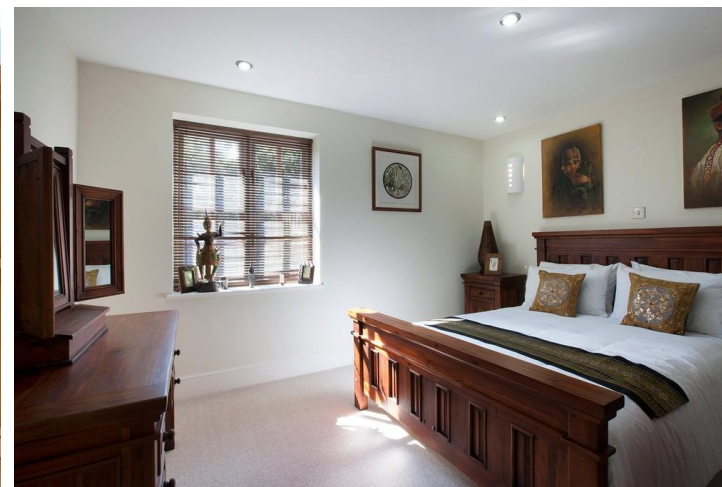
COUNCIL TAX	Band H
TENURE	Freehold
BROADBAND	BT
GARDENS	To all elevations
SERVICES	Oil heating to the house and annexe and LPG to the 2 bungalows, mains electricity, One sespit for all accommodation and water on a meter.

ITEMS INCLUDED IN THE SALE

Double Neff oven, Neff induction hob, extractor, CDA Microwave with grill oven, Neff dishwasher, Neff washer dryer, Neff steam oven, wine cooler, Siemens Barbeque Hob, LPG Wok Hob/Gas, CDA Larder Fridge/freezer and ceiling extractor fans in ceiling.

LIVING ROOM	16' 4" x 11' 4" (4.97m x 3.46m)
KITCHEN	8' 10" x 12' 1" (2.69m x 3.69m)
BEDROOM ONE	12' 0" x 11' 4" (3.66m x 3.46m)
BEDROOM TWO	9' 0" x 12' 1" (2.74m x 3.69m)
SHOWER ROOM	9' 6" x 5' 9" (2.90m x 1.76m)





Ground Floor

Approx. 66.7 sq. metres (718.0 sq. feet)



Total area: approx. 66.7 sq. metres (718.0 sq. feet)

Whilst every attempt has been made to ensure the accuracy of the floor plan contained here, measurements of doors, windows, rooms, and any other items are approximate and no responsibility is taken for any error, omission or mis-statement. This plan is for illustrative purposes only and should be used as such by any prospective purchaser. The services, systems and appliances shown have not been tested and no guarantee as to their operability or efficiency can be given.

Plan produced using PlanUp.