



Eleanor Lodge, Station Road

Guide Price £310,000



PROPERTY OVERVIEW

Presenting this one-bedroom retirement apartment with the convenience of NO UPWARD CHAIN. Set on the first floor, this property is ideally situated in the heart of Knowle, offering easy access to all local amenities and public transport links. With lift access to all floors and a communal entrance, convenience is at the forefront of this residence.

Upon entering, you are greeted by a spacious living room that opens onto a Juliet balcony overlooking communal gardens, providing a tranquil setting. The modern kitchen boasts fully integrated appliances, catering to all your culinary needs. A comfortable double bedroom with a walk-in wardrobe offers ample storage space, while the bathroom features a walk-in shower for added comfort.



Furthermore, this property is equipped with an emergency call system and secure intercom system, ensuring peace of mind for residents. Don't miss the opportunity to experience the comfort and convenience that this retirement apartment has to offer.



PROPERTY LOCATION

Knowle is a conveniently located and delightful village set on the edge of open countryside, with its period charm, half-timbered buildings and is the home to a historic Parish Church. Knowle contains a wide range of interesting shops, restaurants, plus it is home to an excellent junior and infant school and secondary school, Arden Academy (regarded as a leading state school in the UK). Sporting facilities located nearby consist of the Copt Heath Golf Club and the Old Silhillians Rugby Club as well as numerous private gyms. Knowle borders onto the village of Dorridge, which has its own station with links to Birmingham and London. A few minutes' drive away is the nearby town of Solihull, which offers its own excellent state and private schools, Touchwood shopping centre, which houses many shops, restaurants, bars, cinema and John Lewis department store. Knowle village is well placed to access the M42 and M40 motorways, which then provides links to the M1, M6 and M5, enabling travel to Birmingham, Coventry and London. Resorts World and Arena, Birmingham International Airport and Birmingham International Train Station are also within easy access from Knowle village.

Council Tax band: D

Tenure: Leasehold



- One Bedroom Retirement Apartment
- NO UPWARD CHAIN
- Set In The Heart Of Knowle
- Easy Access To Public Transport
- Spacious Living Room
- Modern Kitchen
- Double Bedroom With Walk-In Wardrobe
- Communal Gardens
- 24 Hour Emergency Call System

HALL

LIVING ROOM

18' 6" x 9' 11" (5.64m x 3.01m)

JULIET BALCONY

KITCHEN

8' 3" x 7' 10" (2.51m x 2.40m)

BEDROOM

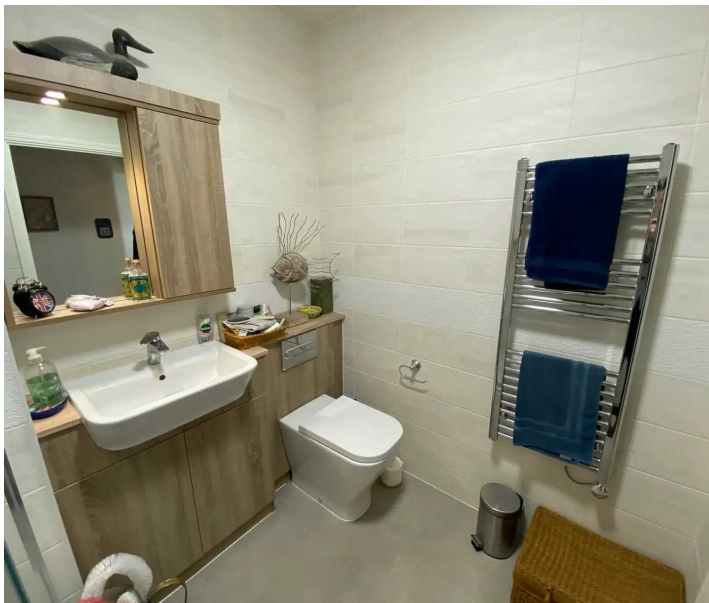
13' 10" x 13' 5" (4.21m x 4.09m)

BATHROOM

7' 6" x 6' 3" (2.29m x 1.90m)

TOTAL SQUARE FOOTAGE

Total floor area: 54.0 sq.m. = 581 sq.ft. approx.





ITEMS INCLUDED IN SALE

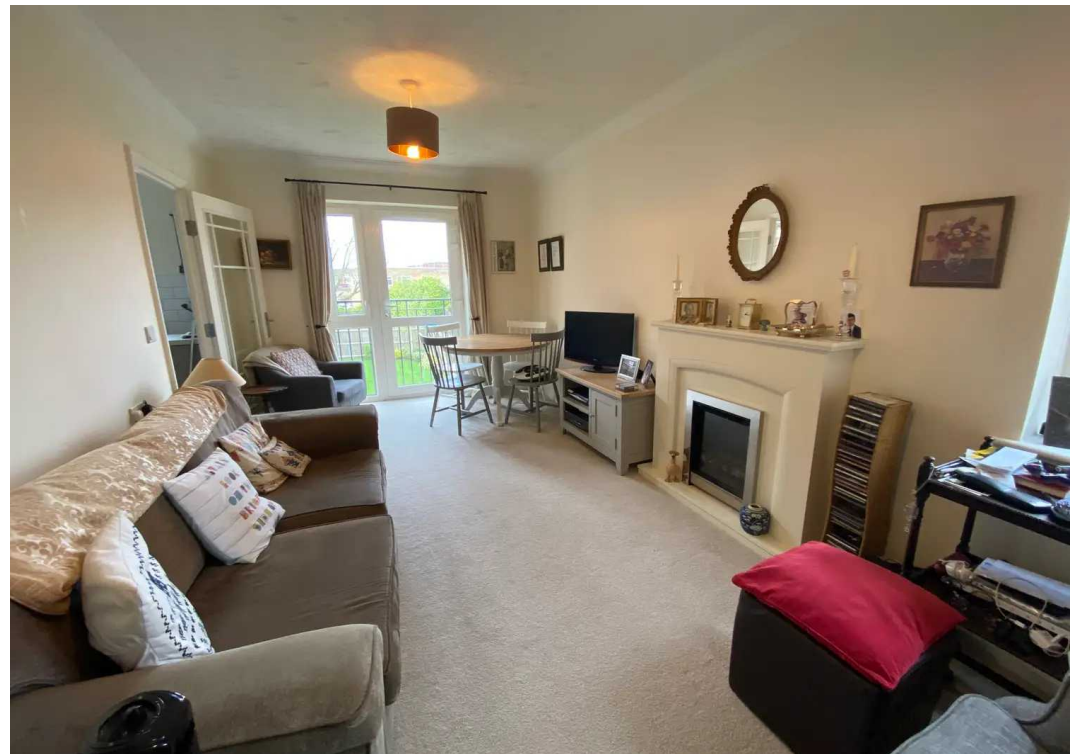
Free standing cooker, integrated oven, integrated hob, extractor, fridge freezer, dishwasher, washing machine, all carpets and all curtains.

ADDITIONAL INFORMATION

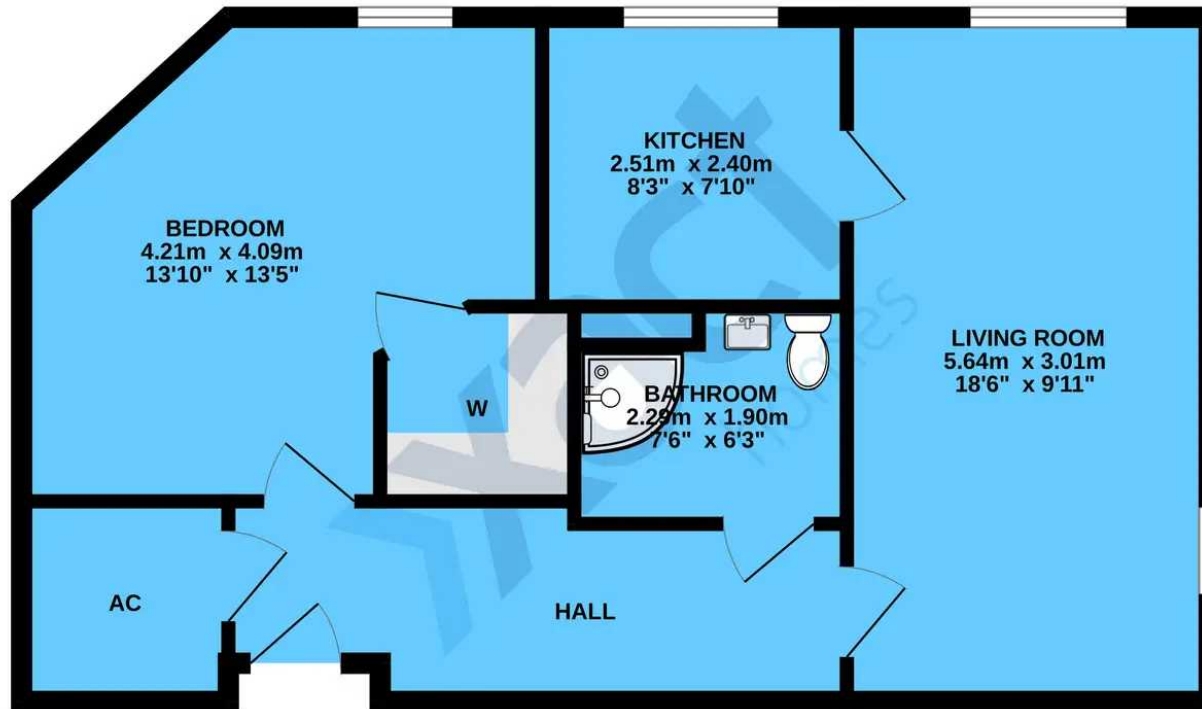
Services - electricity. Broadband - Sky or BT. Ground rent - £575.00 (pa). Service charge - £3700.00 (pa).

MONEY LAUNDERING REGULATIONS

Prior to a sale being agreed, prospective purchasers will be required to produce identification documents. Your co-operation with this, in order to comply with Money Laundering regulations, will be appreciated and assist with the smooth progression of the sale.



1ST FLOOR



TOTAL FLOOR AREA : 54.0 sq.m. (581 sq.ft.) approx.

Whilst every attempt has been made to ensure the accuracy of the floorplan contained here, measurements of doors, windows, rooms and any other items are approximate and no responsibility is taken for any error, omission or mis-statement. This plan is for illustrative purposes only and should be used as such by any prospective purchaser. The services, systems and appliances shown have not been tested and no guarantee as to their operability or efficiency can be given.

Made with Metropix ©2024

Xact Homes

1632-1636 High Street, Knowle - B93 0JU

01564 777284 • knowle@xacthomes.co.uk • www.xacthomes.co.uk

xact
SALES & LETTINGS

