



Luxury property with leisure, including swimming pool.

Alderley Edge, SK9 7DB



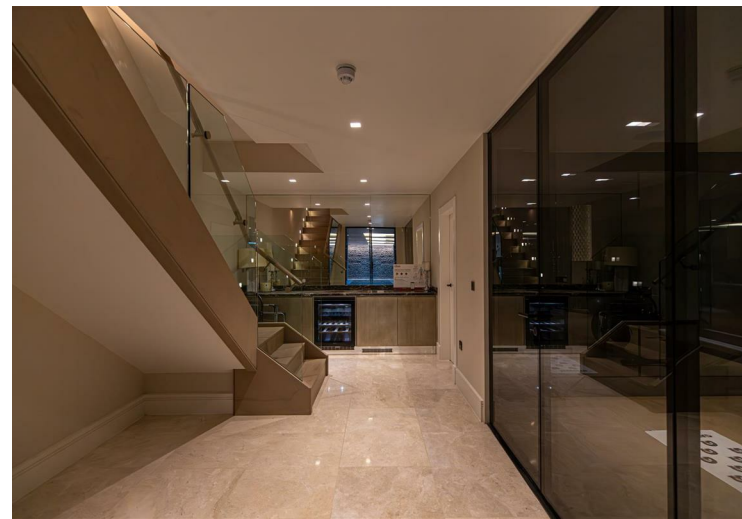
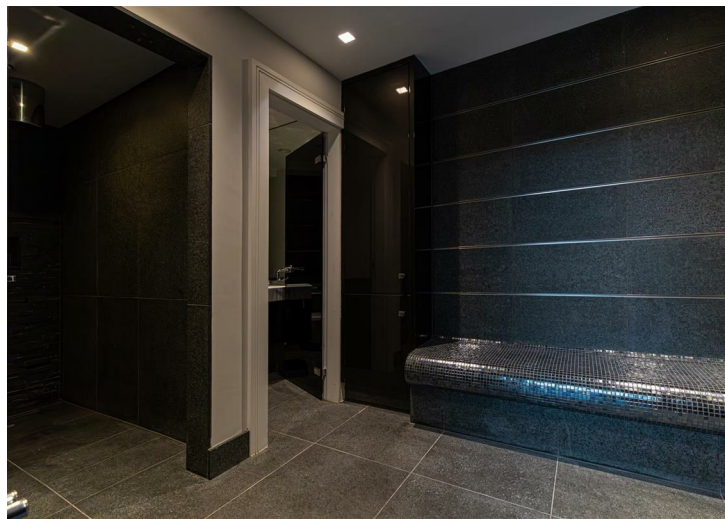
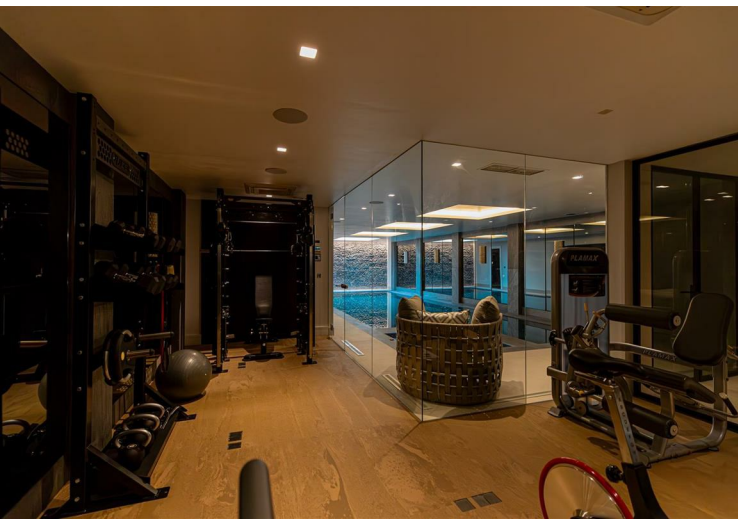
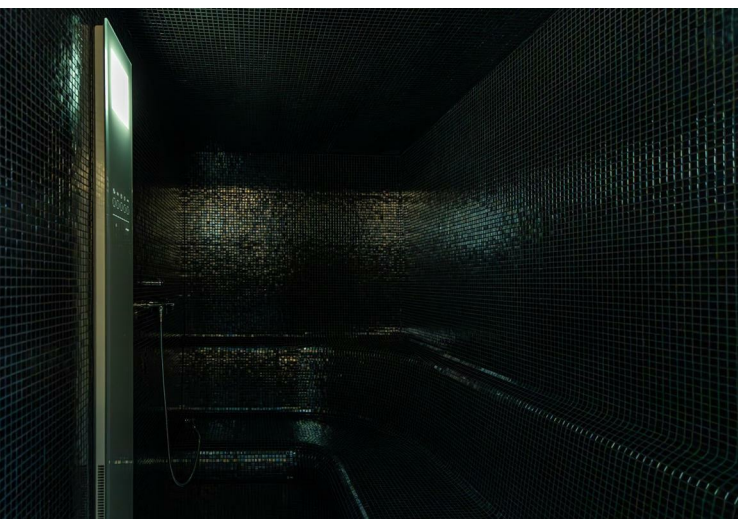
£25,000 Per Calendar Month

Stunning gated home

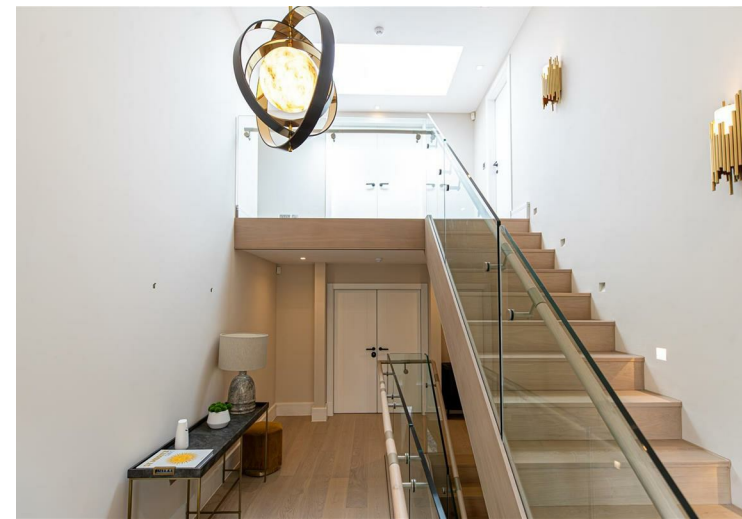
- Swimming pool, sauna, gym
- Double garage
- Large principal suite with ensuite & 2 walk-in wardrobes
- Secondary kitchen

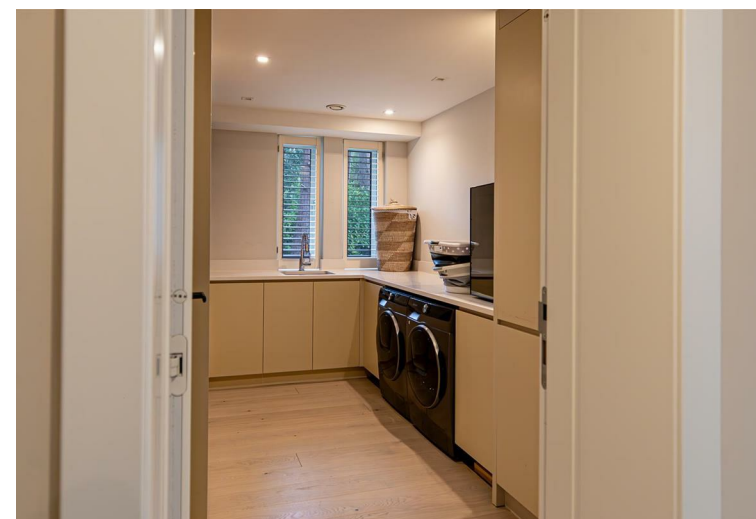
- Ideal location - moments from Alderley Edge centre
- Outdoor pergola & kitchen area
- Fully furnished by an interior designer
- Studio in outbuilding
- All bedrooms with ensembles, 3 with walk-in wardrobes







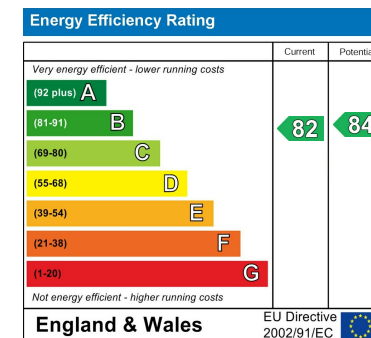




Council Tax Band:
Tax Band

Tenure:

Local Authority:
Cheshire East Council



Hale Office:

190A Ashley Road
Hale
Cheshire
WA15 9SF
Tel: 0161 929 8546

Wilmslow Office:

Blackbox
Beech Lane
Wilmslow
Cheshire SK9 5ER
Tel: 01625 523605

Email:

hale@bensonbunch.co.uk
info@bensonbunch.co.uk

Website:

www.bensonbunch.co.uk

Agents Note: Whilst every care has been taken to prepare these sales particulars, they are for guidance purposes only. All measurements are approximate are for general guidance purposes only and whilst every care has been taken to ensure their accuracy, they should not be relied upon and potential buyers are advised to recheck the measurements