



Carpenters Court South Street

Alderley Edge, SK9 7ES

£1,200 Per Month

- Near Alderley Edge village centre
- 2 bedrooms, 1 bathroom
- Ground floor apartment
- Allocated parking
- Close to the local train station

Available in November. With its prime location in Alderley Village town centre, residents will enjoy easy access to a variety of local shops, cafes, and amenities, making it an ideal choice for those who appreciate a vibrant community atmosphere.

The property features two spacious double bedrooms, providing ample room for relaxation and rest. The modern kitchen is well equipped. There is a large lounge/ dining room; bathroom; two double bedrooms.

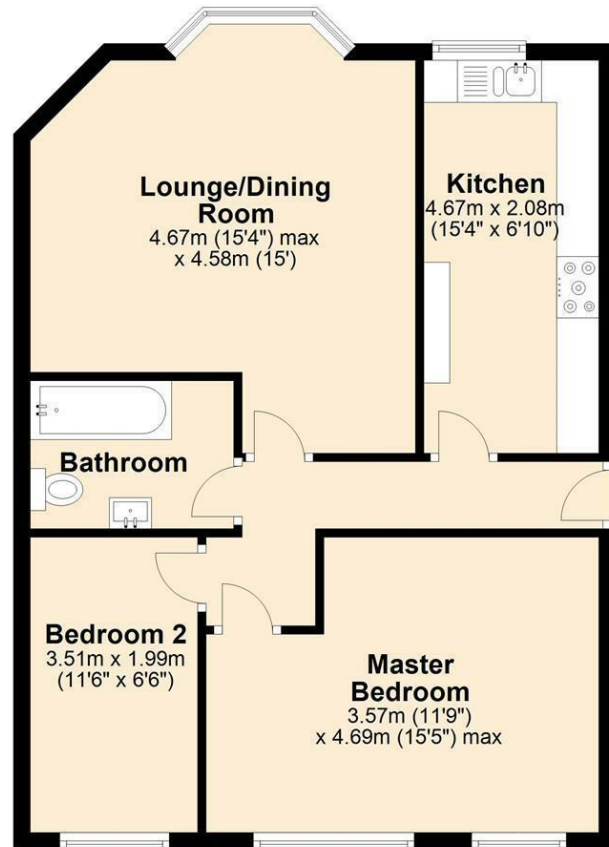
One of the standout features of this property is the allocated parking space, a valuable asset in this bustling area. Additionally, the property is within walking distance to the train station, offering excellent transport links for commuters and those wishing to explore the wider region.

This ground floor apartment presents a wonderful opportunity for anyone seeking a comfortable apartment in a sought-after location. Don't miss the chance to make this apartment your new home!



Ground Floor

Approx. 61.7 sq. metres (663.8 sq. feet)



Measurements are approximate. Floor plans are not to scale and for illustrative purposes only.
Plan produced using PlanUp.

Council Tax Band:
Tax Band C

Tenure:

Local Authority:
Cheshire East

Energy Efficiency Rating		
	Current	Potential
Very energy efficient - lower running costs		
(92 plus) A		
(81-91) B		
(69-80) C	76	78
(55-68) D		
(39-54) E		
(21-38) F		
(1-20) G		
Not energy efficient - higher running costs		
England & Wales	EU Directive 2002/91/EC	

Hale Office:

190A Ashley Road
Hale
Cheshire
WA15 9SF
Tel: 0161 929 8546

Wilmslow Office:

Blackbox
Beech Lane
Wilmslow
Cheshire SK9 5ER
Tel: 01625 523605

Email:

hale@benzonbunch.co.uk
info@benzonbunch.co.uk

Website:

www.bensonbunch.co.uk

Agents Note: Whilst every care has been taken to prepare these sales particulars, they are for guidance purposes only. All measurements are approximate are for general guidance purposes only and whilst every care has been taken to ensure their accuracy, they should not be relied upon and potential buyers are advised to recheck the measurements