

Benson Bunch



Bespoke Property Consultancy
Residential Letting and Sales

ASKING PRICE

£750,000

Wolverton Drive

Wilmslow, SK9 2GD

PROPERTY SUMMARY

Welcome to Wolverton Drive, Wilmslow - a detached house that offers the perfect blend of space, comfort, and convenience. This property features 5 spacious bedrooms and 3 bathrooms spread across 2,480 sq ft, providing ample room for a growing family.

Situated in an ideal location, this house is just a stone's throw away from local amenities and provides easy access to the airport & motorway networks.

Downstairs, the large kitchen-diner offers ample space, which leads to the conservatory & utility. The lounge has a dual aspect which allows plenty of light in. The converted garage offers additional living space that can be tailored to suit your needs.

Upstairs you will find the large, dual aspect primary bedroom with ensuite. Plus, 4 further double bedrooms and 2 bathrooms.

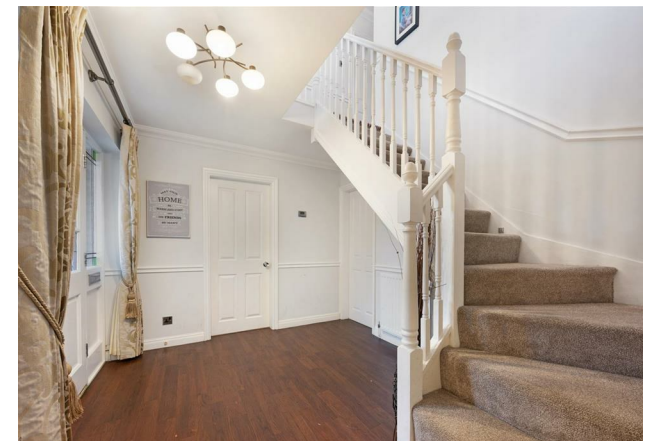
5



3



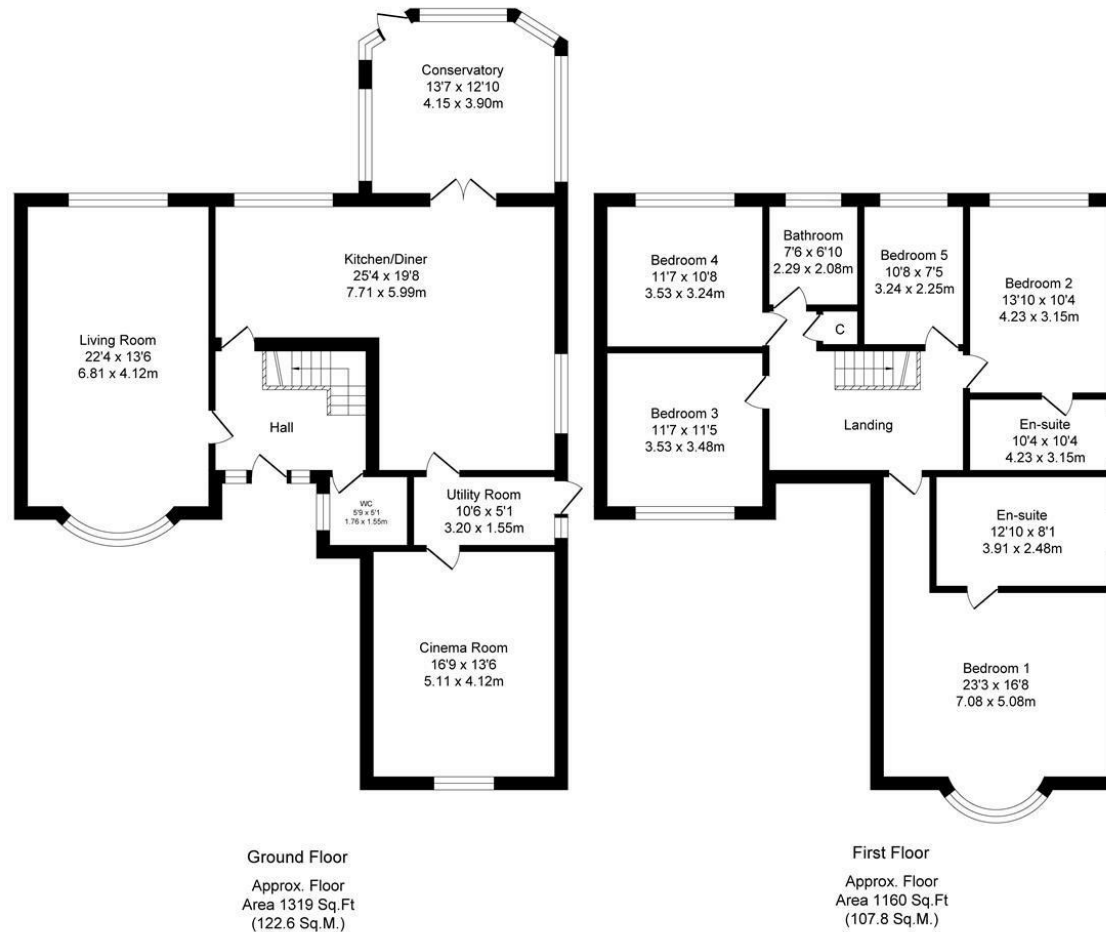
4





Wolverton Dr Wilmslow
Total Approx. Floor Area 2480 Sq.ft. (230.5 Sq.M.)

Surveyed and drawn by Lens Media for illustrative purposes only. Not to scale. Whilst every attempt was made to ensure the accuracy of the floor plan, all measurements are approximate and no responsibility is taken for any error.

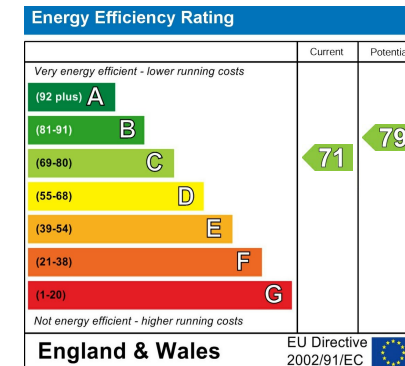


LOCAL AUTHORITY
Cheshire east

TENURE
House - Detached

COUNCIL TAX BAND
F

VIEWINGS
By prior appointment only



Agents Note: Whilst every care has been taken to prepare these particulars, they are for guidance purposes only. All measurements are approximate and are for general guidance purposes only and whilst every care has been taken to ensure their accuracy, they should not be relied upon and potential buyers/tenants are advised to recheck the measurements