



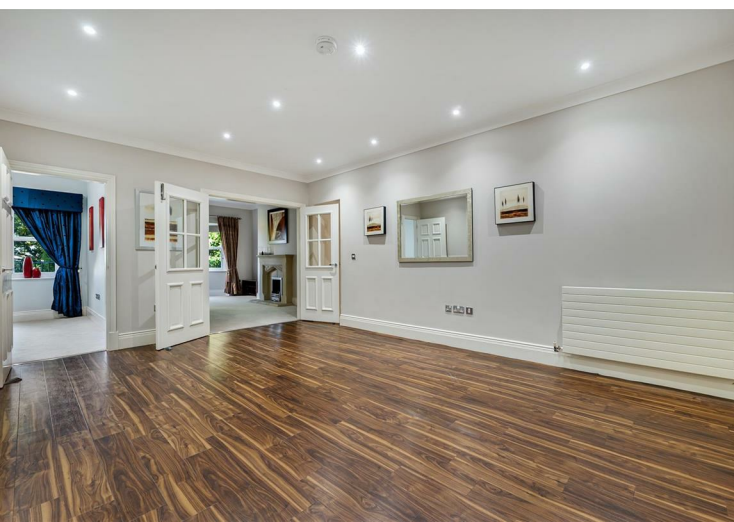
## 8 Kingsbury House

Alderley Edge, SK9 7DA

£2,250 PCM

- Spacious three bedroom apartment
- Three reception rooms
- Master bedroom with en-suite shower room
- Bathroom with shower and bath
- Two Allocated Parking Spaces
- Close to the centre of Alderley Edge Village
- Balcony
- Fully fitted kitchen
- Communal Gardens

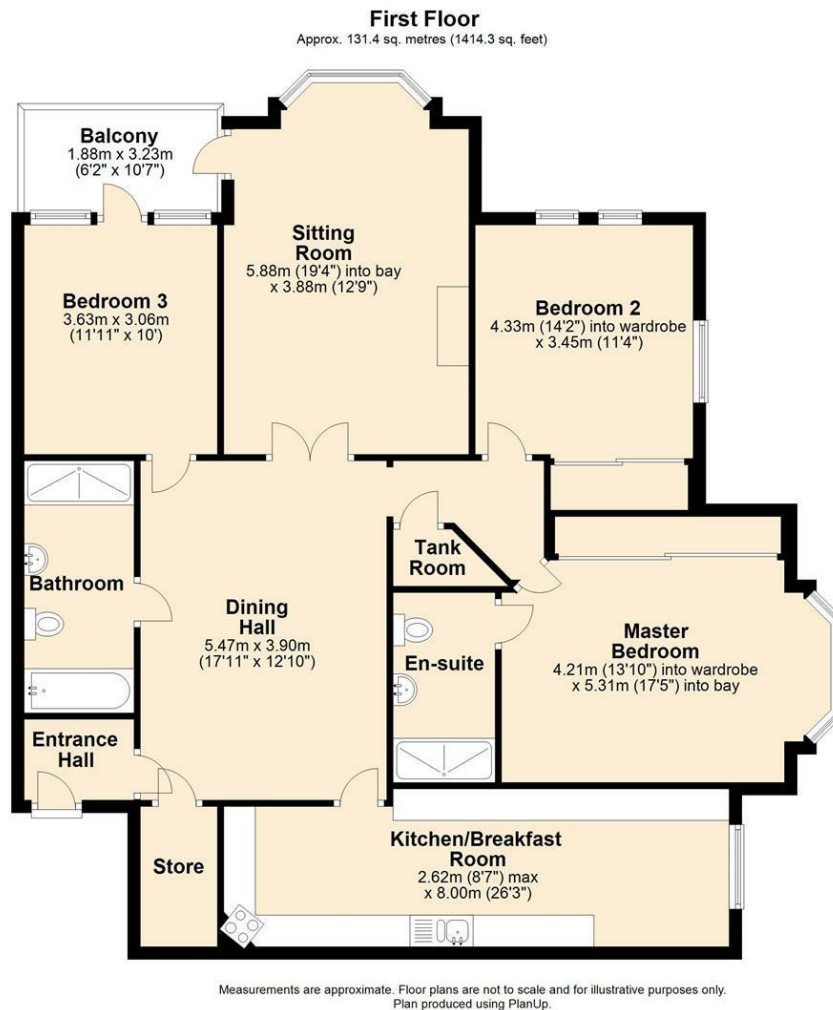












**Council Tax Band:**  
Tax Band G

**Tenure:**

**Local Authority:**  
Cheshire East Council

Energy Efficiency Rating		
	Current	Potential
Very energy efficient - lower running costs		
(92 plus) <b>A</b>		
(81-91) <b>B</b>	82	82
(69-80) <b>C</b>		
(55-68) <b>D</b>		
(39-54) <b>E</b>		
(21-38) <b>F</b>		
(1-20) <b>G</b>		
Not energy efficient - higher running costs		
<b>England &amp; Wales</b>	EU Directive 2002/91/EC	

**Hale Office:**

190A Ashley Road  
Hale  
Cheshire  
WA15 9SF  
Tel: 0161 929 8546

**Wilmslow Office:**

Blackbox  
Beech Lane  
Wilmslow  
Cheshire SK9 5ER  
Tel: 01625 523605

**Email:**

hale@benzonbunch.co.uk  
info@benzonbunch.co.uk

**Website:**

www.bensonbunch.co.uk

**Agents Note:** Whilst every care has been taken to prepare these sales particulars, they are for guidance purposes only. All measurements are approximate are for general guidance purposes only and whilst every care has been taken to ensure their accuracy, they should not be relied upon and potential buyers are advised to recheck the measurements