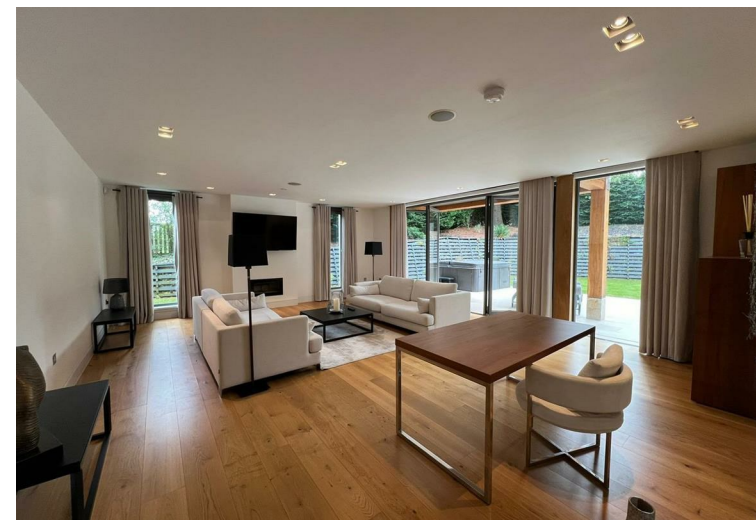
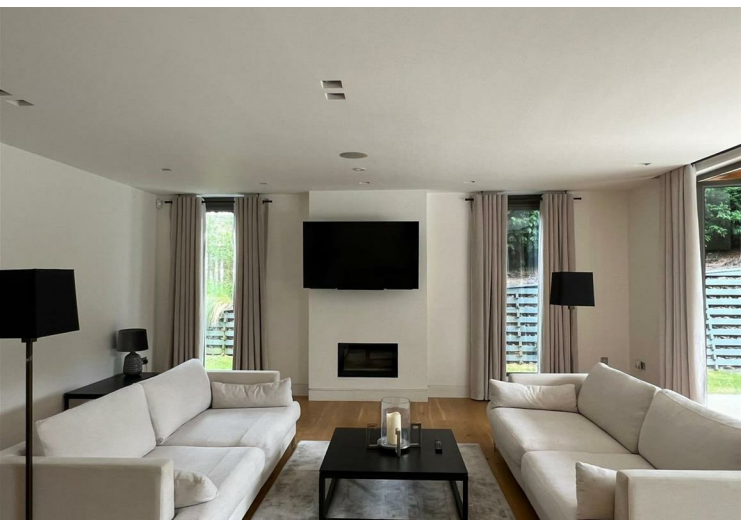
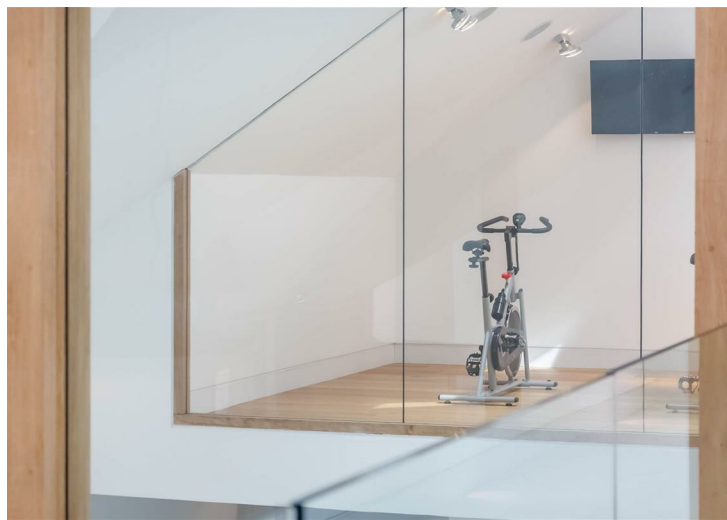
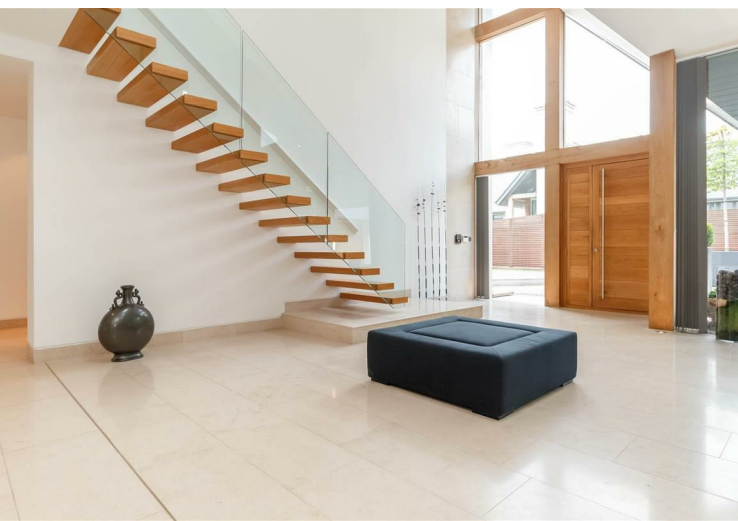


57A Macclesfield Road
Cheshire, SK10 4BH

£19,000 PCM

- Stunning modern home
- 5 x Bedrooms
- 6 x Bathrooms
- Potential annex/ 6th bedroom
- Spacious modern living kitchen
- Internal Spa pool with jets
- Steam room/ sauna
- Gated parking leading to garage
- Wrap around gardens with hot tub
- Prime location with a great degree of privacy

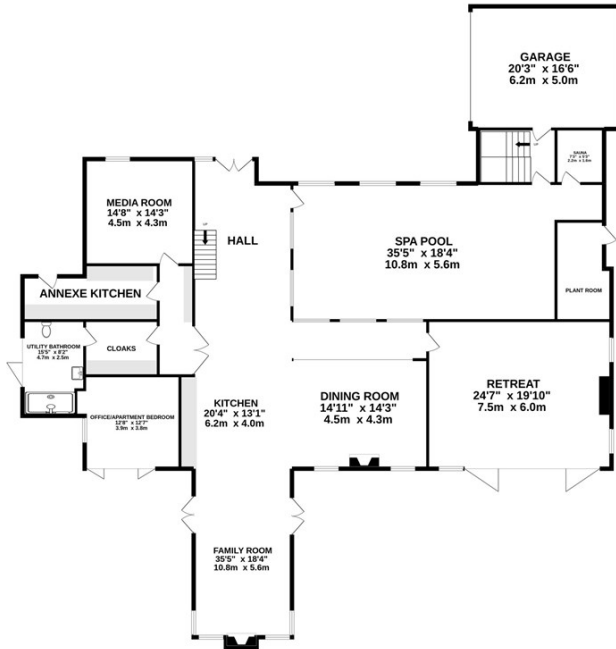




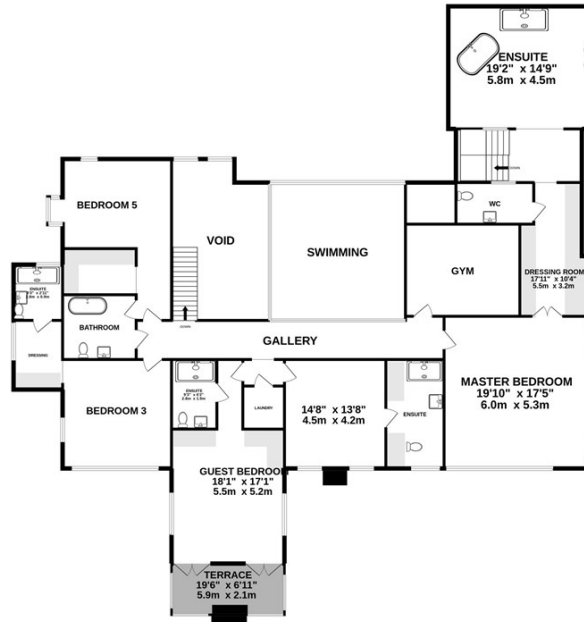




GROUND FLOOR
3677 sq.ft. (341.6 sq.m.) approx.



1ST FLOOR
3553 sq.ft. (330.0 sq.m.) approx.



TOTAL FLOOR AREA : 7230 sq.ft. (671.7 sq.m.) approx.

Whilst every attempt has been made to ensure the accuracy of the floorplan contained here, measurements of doors, windows, rooms and any other items are approximate and no responsibility is taken for any error, omission or mis-statement. This plan is for illustrative purposes only and should be used as such by any prospective purchaser. The services, systems and appliances shown have not been tested and no guarantee as to their operability or efficiency can be given.
Made with Metropix ©2022

Council Tax Band:
Tax Band H

Tenure:

Local Authority:
Cheshire East Council

Energy Efficiency Rating		Current	Potential
Very energy efficient - lower running costs			
(92 plus) A			
(81-91) B		83	84
(69-80) C			
(55-68) D			
(39-54) E			
(21-38) F			
(1-20) G			
Not energy efficient - higher running costs			
England & Wales		EU Directive 2002/91/EC	

Hale Office:

190A Ashley Road
Hale
Cheshire
WA15 9SF
Tel: 0161 929 8546

Wilmslow Office:

Blackbox
Beech Lane
Wilmslow
Cheshire SK9 5ER
Tel: 01625 523605

Email:

hale@benso**n**bunch.co.uk
info@benso**n**bunch.co.uk

Website:

www.benso**n**bunch.co.uk

Agents Note: Whilst every care has been taken to prepare these sales particulars, they are for guidance purposes only. All measurements are approximate are for general guidance purposes only and whilst every care has been taken to ensure their accuracy, they should not be relied upon and potential buyers are advised to recheck the measurements