



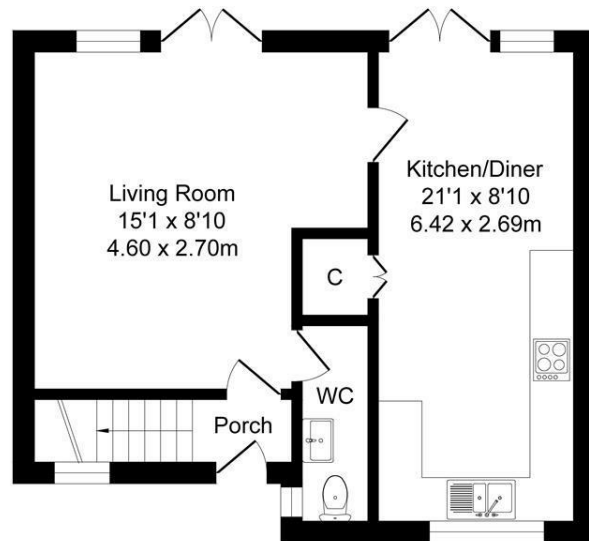
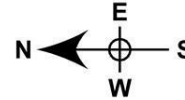
15 Appleton Walk
Wilmslow, SK9 2HN

Asking Price £230,000

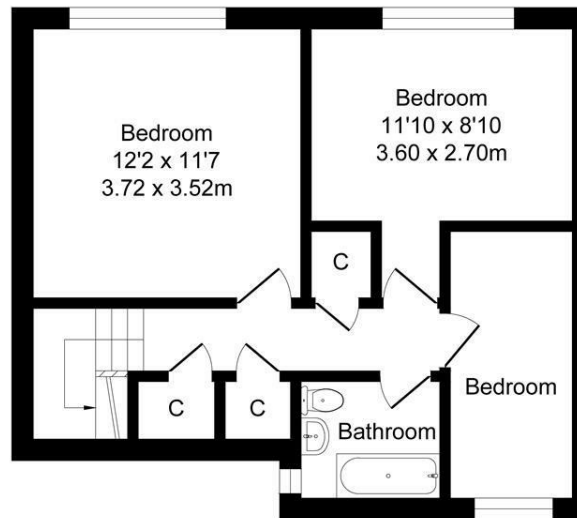
Appleton walk

Total Approx. Floor Area 970 Sq.ft. (90.2 Sq.M.)

Surveyed and drawn by Lens Media for illustrative purposes only. Not to scale. Whilst every attempt was made to ensure the accuracy of the floor plan, all measurements are approximate and no responsibility is taken for any error.



Ground Floor
Approx. Floor Area 485 Sq.Ft (45.1 Sq.M.)



First Floor
Approx. Floor Area 485 Sq.Ft (45.1 Sq.M.)

Council Tax Band:
Tax Band A

Tenure:
Freehold

Local Authority:
Cheshire East

Energy Efficiency Rating		Current	Potential
Very energy efficient - lower running costs			
(92 plus) A			85
(81-91) B			
(69-80) C		70	
(55-68) D			
(39-54) E			
(21-38) F			
(1-20) G			
Not energy efficient - higher running costs			
England & Wales		EU Directive 2002/91/EC	

Hale Office:

190A Ashley Road
Hale
Cheshire
WA15 9SF
Tel: 0161 929 8546

Wilmslow Office:

Blackbox
Beech Lane
Wilmslow
Cheshire SK9 5ER
Tel: 01625 523605

Email:

hale@bensonbunch.co.uk
info@bensonbunch.co.uk

Website:

www.bensonbunch.co.uk

Agents Note: Whilst every care has been taken to prepare these sales particulars, they are for guidance purposes only. All measurements are approximate are for general guidance purposes only and whilst every care has been taken to ensure their accuracy, they should not be relied upon and potential buyers are advised to recheck the measurements