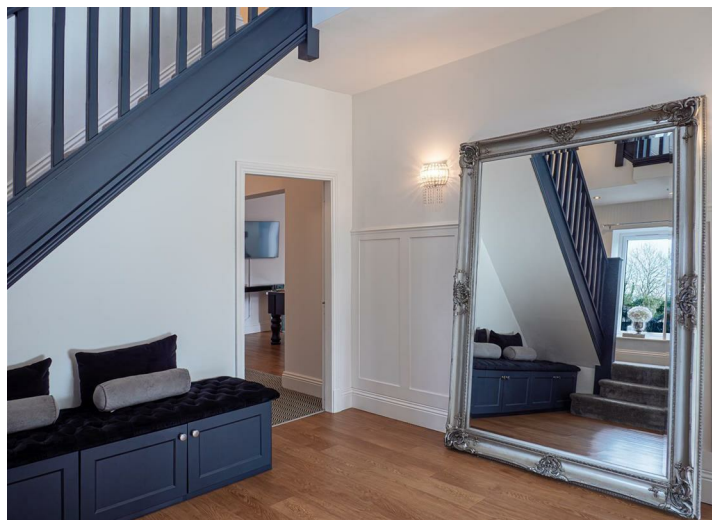
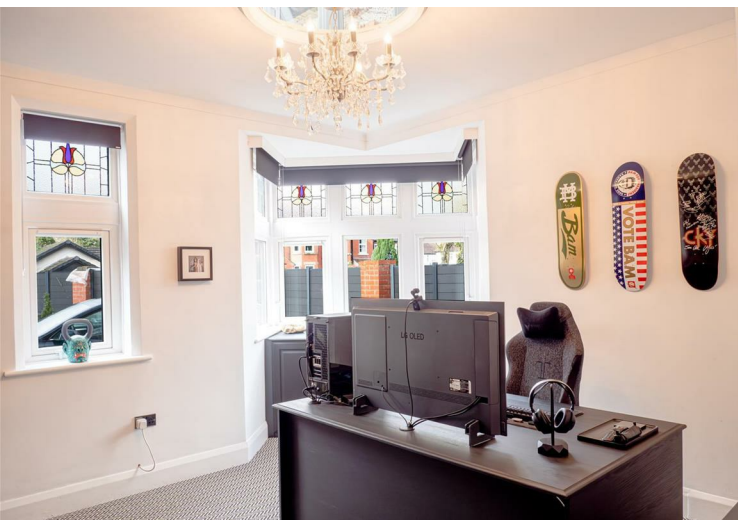
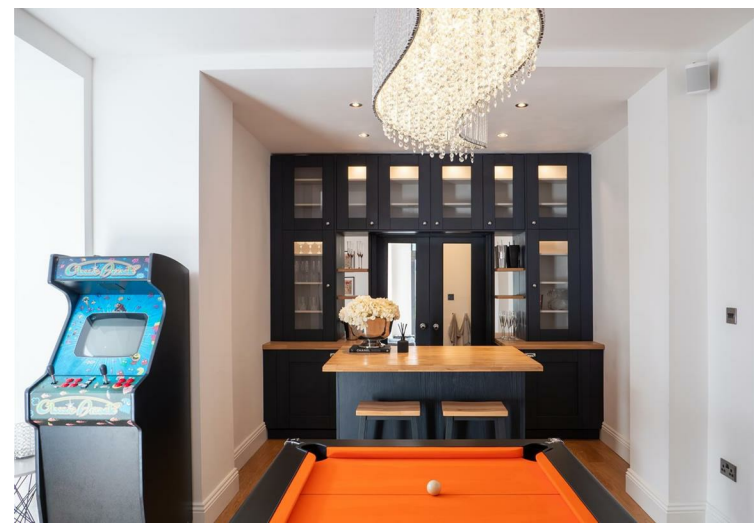


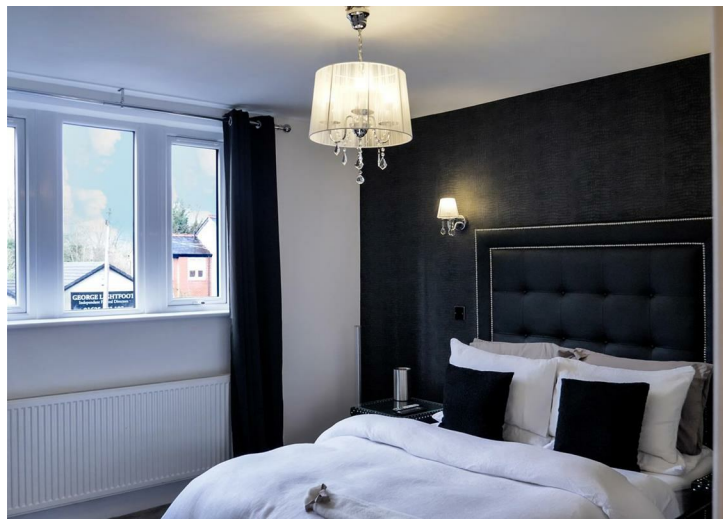


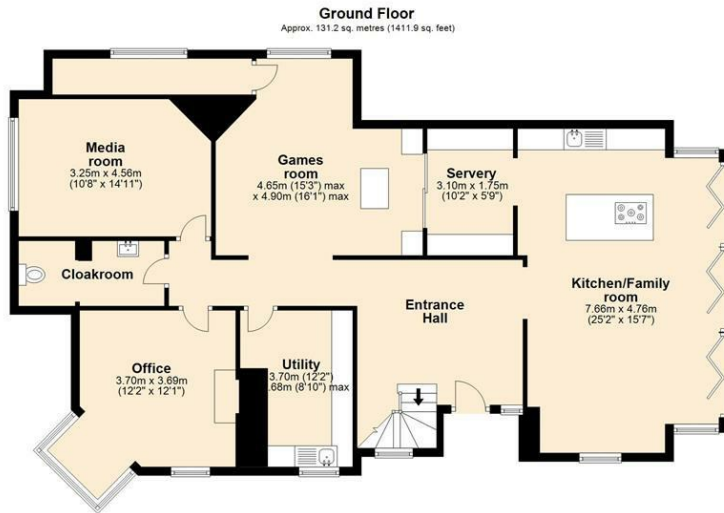
126 Manchester Road
Wilmslow, SK9 2LE

£1,050,000

- Large southerly facing garden
- Open plan layout
- Detached
- High ceilings
- Extended & renovated
- 6 bedrooms, 5 bathrooms
- Modern interior
- Gated
- Easy access to main road network
- Games room & office.







Council Tax Band:
Tax Band

Tenure:
Freehold

Local Authority:



Measurements are approximate. Floor plans are not to scale and for illustrative purposes only. Plan produced using PlanUp.

Energy Efficiency Rating		Current	Potential
Very energy efficient - lower running costs			
(92 plus) A			
(81-91) B			
(69-80) C		74	79
(55-68) D			
(39-54) E			
(21-38) F			
(1-20) G			
Not energy efficient - higher running costs			
England & Wales		EU Directive 2002/91/EC	

Hale Office:

190A Ashley Road
 Hale
 Cheshire
 WA15 9SF
 Tel: 0161 929 8546

Wilmslow Office:

Blackbox
 Beech Lane
 Wilmslow
 Cheshire SK9 5ER
 Tel: 01625 523605

Email:

hale@bensonbunch.co.uk
 info@bensonbunch.co.uk

Website:

www.bensonbunch.co.uk

Agents Note: Whilst every care has been taken to prepare these sales particulars, they are for guidance purposes only. All measurements are approximate are for general guidance purposes only and whilst every care has been taken to ensure their accuracy, they should not be relied upon and potential buyers are advised to recheck the measurements