

# WORK AT

# THE MAILBOX

**A wide range of  
secure offices ranging  
from 2 to 12 work spaces  
with flexible rental periods  
and high-speed broadband.**

## **FLEXIBLE OFFICE SPACE**

**The Mailbox,  
Exchange St,  
Stockport  
SK3 0GA**



High speed  
broadband



Meeting  
rooms



Reception  
services



Fantastic  
location





**Featuring a range of offices to suit all business types equalling 12,500 sq ft in aggregate with flexible lease terms and high-speed broadband.**

The Mailbox creates safe solutions for small or medium sized businesses and start-ups requiring flexible, safe offices and occasional meeting spaces. You can also enjoy our private work out space and furnished rooftop garden with stunning views.



### **Flexible**

Secure, lockable offices with 2 or more desks. Reduce overheads and flex up if you need to in future.



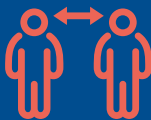
### **Professional**

A cutting edge regeneration project. The Mailbox offers beautiful, yet safe work and meeting space for your team and clients to enjoy.



### **Affordable**

With a range of plans, we want to help businesses to enjoy the very best working environment without the committed overhead of a large office rental.



### **Covid safe**

Have peace-of-mind knowing that additional cleaning and Covid safety precautions have been put into place.



### **Scalable**

As you grow, you can scale up. With a lockable office to call your own and additional meeting space for occasional use.



### **Location**

A state of the art building, with cycle storage, parking available and some of the best travel connections you could wish for.



### **Reception Services**

Having a manned reception means that we can assist with meeting room bookings, various concierge services, reporting any issues and other general enquiries.



### **Connectivity**

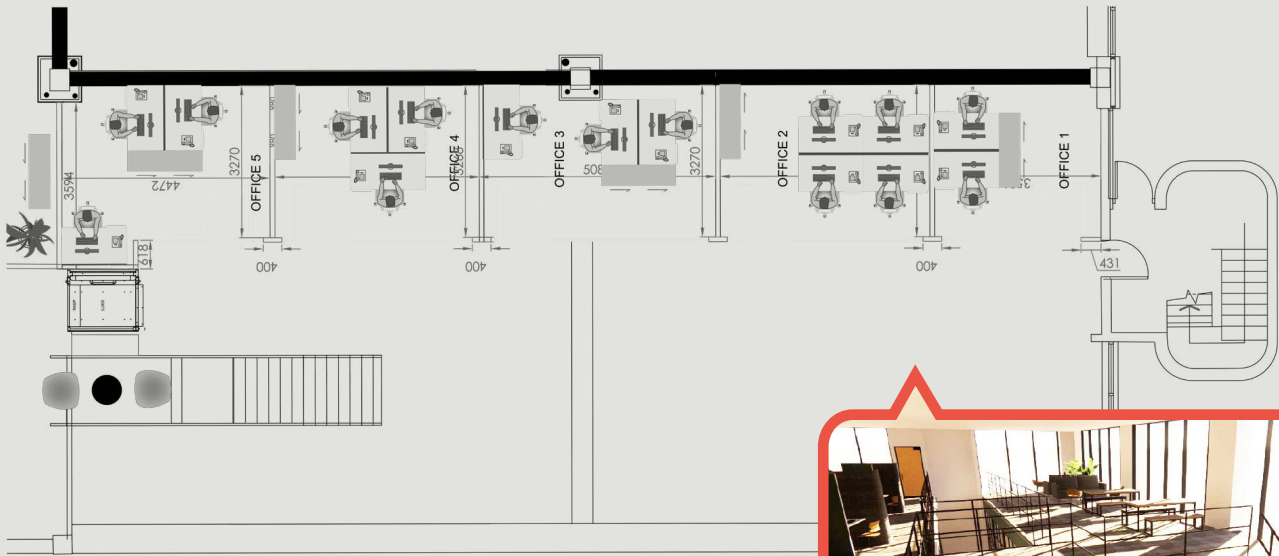
Stay connected with ultra fast high-speed broadband and VoIP land lines at the ready.



### **Facilities**

The Mailbox offers excellent facilities such as a kitchen, showers and a work out space. Meaning you can spend your lunch breaks working out!

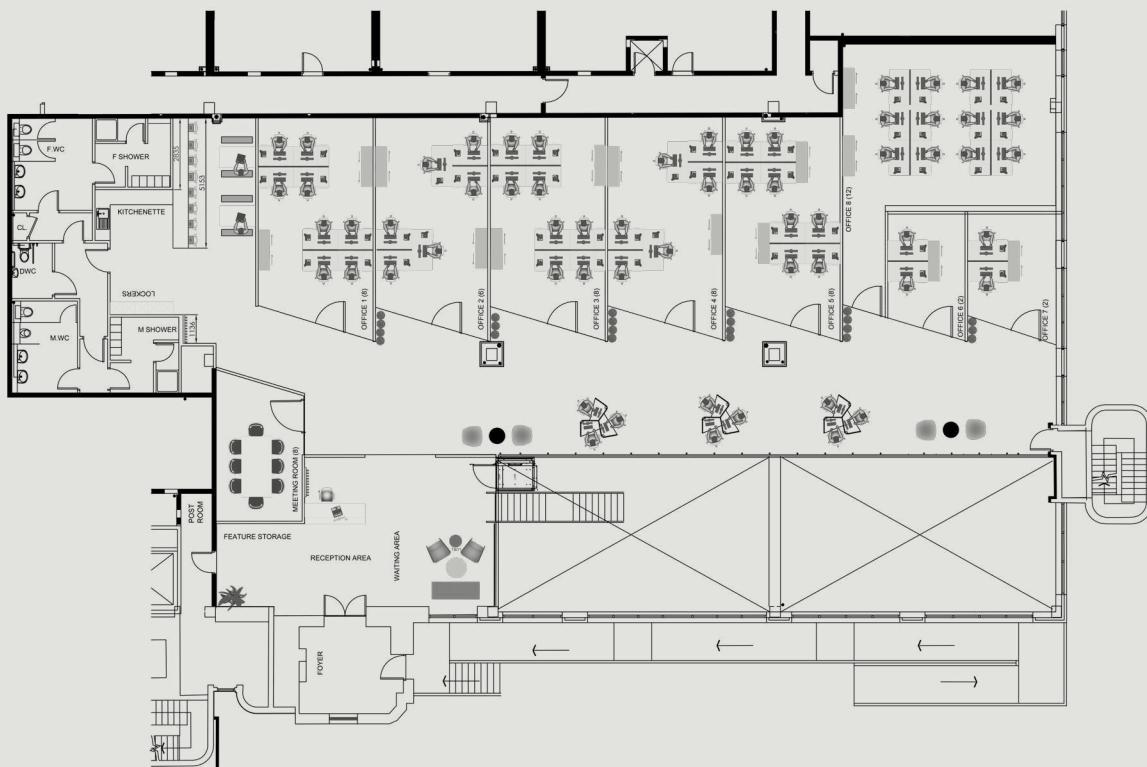
# THE MAILBOX LOWER GROUND FLOOR



The second phase of the lower ground floor can be fitted out to suit your requirements.



# THE MAILBOX GROUND FLOOR



The location of The Mailbox is second to none. Named the region's 'coolest, greenest, new urban village', The Mailbox lies just a short walk from Stockport's regeneration scheme, the Stockport Exchange.



Stockport is an exciting neighbourhood with fantastic public transport connections.

## THE MAILBOX



## HOW TO FIND US

The Mailbox, Exchange Street, Stockport SK3 0GA

Situated a 5 minute walk from the centre of Stockport, a 2 minute walk from the train and bus stations and a 10 minute drive from Manchester Airport, it's an excellent location for commuters.

Trains into Manchester are every few minutes. The fast train to London is just a 2 hour journey.

## CONTACT US

For more information contact our letting agents Roger Hannah on

**0161 817 3399**

or email

[danrodgers@roger-hannah.co.uk](mailto:danrodgers@roger-hannah.co.uk)

[www.risehomes.co.uk/the-mailbox](http://www.risehomes.co.uk/the-mailbox)

