



CHESTER SQUARE

Belgravia SW1W



A GRAND STUCCO FRONTED HOUSE

Grand white stucco fronted house, with large lift in a premier position
within Chester Square.



Local Authority: City of Westminster

Council Tax band: H

Tenure: Freehold

Guide Price: £22,500,000



INCLUDING IMPRESSIVE AMENITIES

The house benefits from impressive amenities including a large passenger lift, parking for 3 cars (including a double garage), grand portico entrance, 3 terraces/balconies, wine cellar with large humidor, gym/jacuzzi/steam room/sauna, media room, study and very large room proportions. The accommodation is serviced under floor heating and air conditioning throughout. The grand entrance hallway on the ground floor leads to a formal dining room and then a family kitchen/breakfast room (with a spectacular extra high ceiling). The first floor drawing room benefits from superb proportions, high ceilings, direct views over the Square's gardens and double doors at the rear leading onto a south facing roof terrace. The master bedroom suite is located on the second floor and benefits from a dressing room and en-suite bathroom. There are 5 further bedrooms each with en-suite facilities. On the lower level is a wine cellar with large humidor, utility room/staff kitchenette a stunning gym, jacuzzi, steam room











LOCATED IN A SOUGHT AFTER POSITION

The property seamlessly incorporates the mews to the rear with a media room, a study and a substantial garage providing secure off street parking.

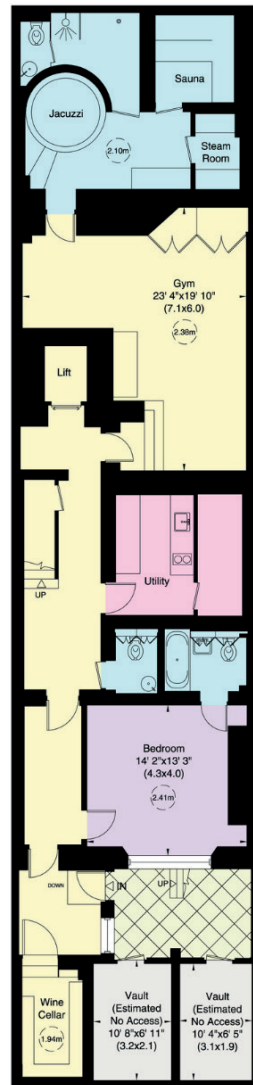
Chester Square is regarded as one of prime central London's premier addresses. Victoria Station with an express link to Gatwick Airport is 0.3 miles from the property.

The world renowned shops and restaurants of the Kings Road (0.5 miles) and Knightsbridge (0.7 miles) are nearby. (All distances are approximate).



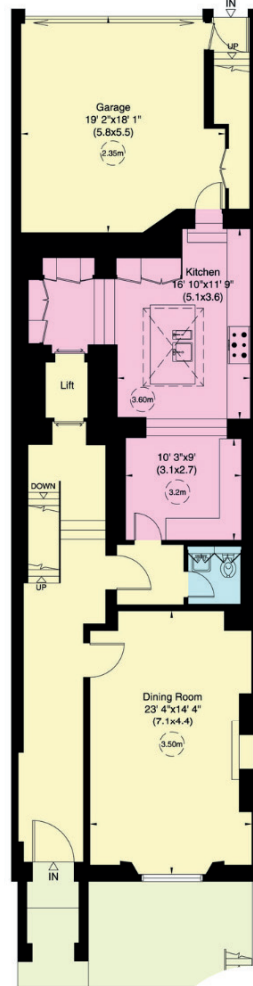


Lower Ground Floor Mews



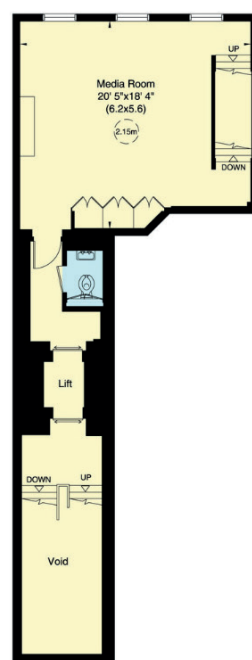
Lower Ground Floor

Ground Floor Mews



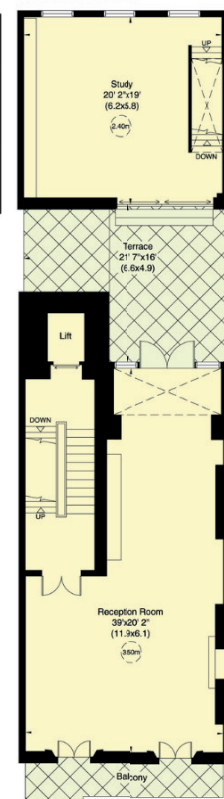
Ground Floor

First Floor Mews



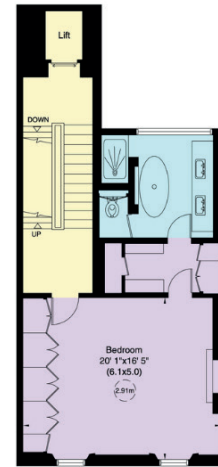
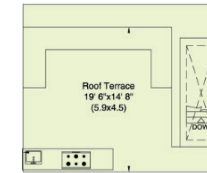
Half Landing

Second Floor Mews

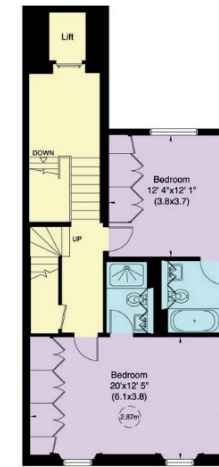


First Floor

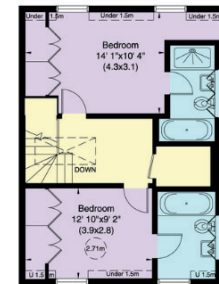
Roof Mews



Second Floor



Third Floor



Fourth Floor



Chester Square and Eaton Mews East, SWIW

Approximate Gross Internal Area Including Under 1.5m and Vaults = 639 sq m / 6880 sq ft

Approximate Gross Internal Area Excluding Under 1.5m and Vaults= 624 sq m / 6720 sq ft

This plan is for layout guidance only. Not drawn to scale unless stated. Windows and door openings are approximate. Whilst every care is taken in the preparation of this plan, please check all dimensions, shapes and compass bearings before making any decisions reliant upon them. (ID767266)



Matthew Armstrong

+44 20 7881 7728

matthew.armstrong@knightfrank.com

Knight Frank Belgravia

47 Lower Belgrave Street

Belgravia, London SW1W 0LS

[knightfrank.co.uk](https://www.knightfrank.co.uk)

Your partners in property

1. Particulars: These particulars are not an offer or contract, nor part of one. You should not rely on statements given by Knight Frank in the particulars, by word of mouth or in writing ("information") as being factually accurate about the property, its condition or its value. Neither Knight Frank nor any joint agent has any authority to make any representations about the property, and accordingly any information given is entirely without responsibility on the part of Knight Frank. 2. Material Information: Please note that the material information is provided to Knight Frank by third parties and is provided here as a guide only. While Knight Frank has taken steps to verify this information, we advise you to confirm the details of any such material information prior to any offer being submitted. If we are informed of changes to this information by the seller or another third party, we will use reasonable endeavours to update this as soon as practical. 3. Photos, Videos etc: The photographs, property videos and virtual viewings etc. show only certain parts of the property as they appeared at the time they were taken. Areas, measurements and distances given are approximate only. 4. Regulations etc: Any reference to alterations to, or use of, any part of the property does not mean that any necessary planning, building regulations or other consent has been obtained. A buyer must find out by inspection or in other ways that these matters have been properly dealt with and that all information is correct. 5. Fixtures and fittings: A list of the fitted carpets, curtains, light fittings and other items fixed to the property which are included in the sale (or may be available by separate negotiation) will be provided by the Seller's Solicitors. 6. VAT: The VAT position relating to the property may change without notice. 7. To find out how we process Personal Data, please refer to our Group Privacy Statement and other notices at <https://www.knightfrank.com/legals/privacy-statement>.

Particulars dated 2025. Photographs and videos dated 2023. All information is correct at the time of going to print. Knight Frank is the trading name of Knight Frank LLP. Knight Frank LLP is a limited liability partnership registered in England and Wales with registered number OC305934. Our registered office is at 55 Baker Street, London W1U 8AN. We use the term 'partner' to refer to a member of Knight Frank LLP or an employee or consultant. A list of members names of Knight Frank LLP may be inspected at our registered office. If you do not want us to contact you further about our services then please contact us by either calling 020 3544 0692, email to marketing.help@knightfrank.com or post to our UK Residential Marketing Manager at our registered office (above) providing your name and address.

