



BUCKINGHAM GATE

Westminster SW1E



BLENDING GRAND PROPORTIONS WITH MODERN LUXURY

Occupying the first floor of a beautifully restored period building on Buckingham Gate, this lateral apartment spans approximately 1,854 sq ft and offers a seamless balance of heritage charm and contemporary sophistication.



3



4



1

EPC

C

Local Authority: City of Westminster

Council Tax band: H

Tenure: Leasehold Approximatley 989 years remaining on the lease

Ground rent: £2,500 per annum. Please note we have been unable to obtain the next review date and period, please enquire.

Service charge: £22,000 per annum. Reviewed annually. Please note we have been unable to obtain the next review date, please enquire.

Guide Price: £3,200,000



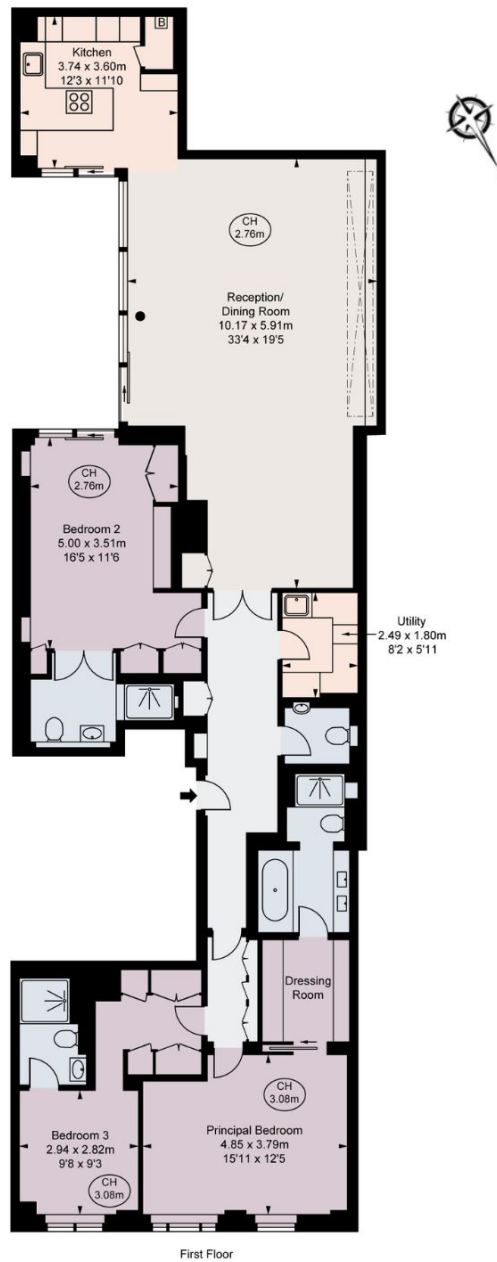
CLOSE PROXIMITY TO THE BEST OF CENTRAL LONDON LIVING

The property features three en suite bedrooms, each with luxurious bathrooms, while the principal suite benefits from a dedicated dressing room and generous storage. The open-plan reception and dining room provides impressive scale, with large windows inviting an abundance of natural light. A bespoke Italian-designed kitchen is fitted with high-end appliances and overlooks the reception space. Additional highlights include comfort cooling, underfloor heating, oak flooring, and integrated LED lighting throughout. A utility room and separate guest cloakroom offer excellent practicality, and the building is attended by a weekday porter, providing convenience and peace of mind. This apartment represents an exceptional opportunity for those seeking refined, single-level living in one of London's most prestigious addresses. Situated directly opposite St James's Park, Buckingham Gate is moments from Buckingham Palace, the West End, and Victoria's new vibrant restaurant and shopping scene.









Buckingham Gate, SW1E
 Approximate Gross Internal Area = 172.26 sq m / 1854 sq ft

This plan is for layout guidance only. Not drawn to scale unless stated. Windows and door openings are approximate. Whilst every care is taken in the preparation of this plan, please check all dimensions, shapes and compass bearings before making any decisions reliant upon them. (ID767266)

We would be delighted
to tell you more.

Chris Mulry
020 7881 7727
chris.mulry@knightfrank.com

Knight Brank Belgravia
47 Lower Belgrave Street
Belgravia, London SW1W 0LS

knightfrank.co.uk

Your partners in property

1. Particulars: These particulars are not an offer or contract, nor part of one. You should not rely on statements given by Knight Frank in the particulars, by word of mouth or in writing ("information") as being factually accurate about the property, its condition or its value. Neither Knight Frank nor any joint agent has any authority to make any representations about the property, and accordingly any information given is entirely without responsibility on the part of Knight Frank. 2. Material Information: Please note that the material information is provided to Knight Frank by third parties and is provided here as a guide only. While Knight Frank has taken steps to verify this information, we advise you to confirm the details of any such material information prior to any offer being submitted. If we are informed of changes to this information by the seller or another third party, we will use reasonable endeavours to update this as soon as practical. 3. Photos, Videos etc: The photographs, property videos and virtual viewings etc. show only certain parts of the property as they appeared at the time they were taken. Areas, measurements and distances given are approximate only. 4. Regulations etc: Any reference to alterations to, or use of, any part of the property does not mean that any necessary planning, building regulations or other consent has been obtained. A buyer must find out by inspection or in other ways that these matters have been properly dealt with and that all information is correct. 5. Fixtures and fittings: A list of the fitted carpets, curtains, light fittings and other items fixed to the property which are included in the sale (or may be available by separate negotiation) will be provided by the Seller's Solicitors. 6. VAT: The VAT position relating to the property may change without notice. 7. To find out how we process Personal Data, please refer to our Group Privacy Statement and other notices at <https://www.knightfrank.com/legals/privacy-statement>. Particulars dated November 2025. Photographs and videos dated October 2025. All information is correct at the time of going to print. Knight Frank is the trading name of Knight Frank LLP. Knight Frank LLP is a limited liability partnership registered in England and Wales with registered number OC305934. Our registered office is at 55 Baker Street, London W1U 8AN. We use the term 'partner' to refer to a member of Knight Frank LLP, or an employee or consultant. A list of members names of Knight Frank LLP may be inspected at our registered office. If you do not want us to contact you further about our services then please contact us by either calling 020 3544 0692, email to marketing.help@knightfrank.com or post to our UK Residential Marketing Manager at our registered office (above) providing your name and address. We have been informed that the primary external wall materials of the building/block have been assessed for fire safety. The assessor concluded that the fire risk of the external wall materials is sufficiently low that no remedial works are required. If you have any further questions, you should seek independent professional advice.