






## MONTROSE PLACE

London, SW1X



## A MASTERPIECE IN MODERN DESIGN

An exceptional lateral ground floor apartment situated in one of the most prominent recent developments in Knightsbridge and Belgravia.

			EPC
3	3	3	B

Local Authority: City of Westminster

Council Tax band: H

Tenure: Leasehold Approximately 107 years remaining on the lease

Ground rent: Please note, we have been unable to obtain ground rent information. Please make your own enquiries.

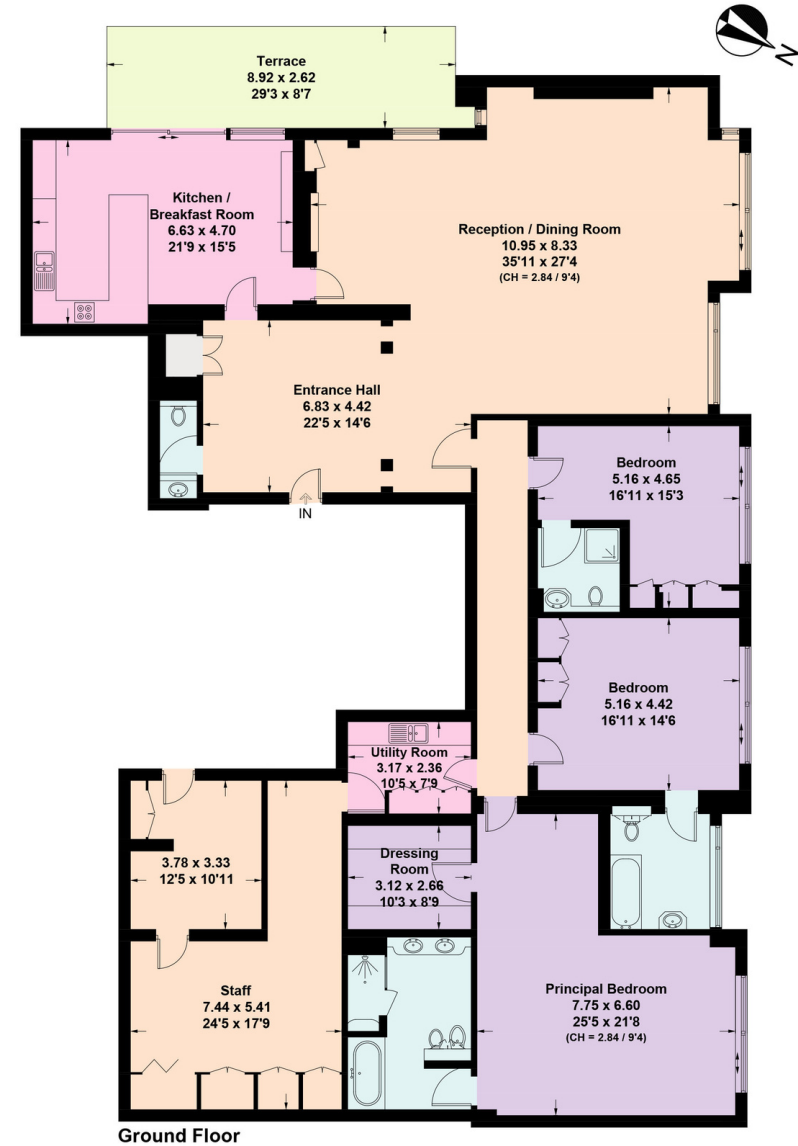
Service charge: Please note, we have been unable to obtain service charge information. Please make your own enquiries.

**Guide Price: £7,000,000**

The apartment comprises an open double reception room, a kitchen/dining area overlooking the patio, and three bedrooms with ensuite bathrooms. The property has the benefit of 24 hour security and concierge, and private underground parking for two cars. Montrose Place offers fully serviced living and privacy in an exceptional location on a quiet street between the eastern terrace of Belgrave Square and Grosvenor Place. Positioned close to Hyde Park, the surrounding area of Belgravia provides a mix of independent shops, bars and cafés. Michelin starred restaurants and some of London's finest hotels are also within easy reach, with Buckingham Palace and Sloane Square locally. Montrose Place benefits from excellent transport links and offers easy access to the underground network. The National Rail network is nearby at Victoria Station, which offers direct trains to Gatwick Airport.

Please note, we have not yet received confirmation from the client regarding certain information for this property. You should ensure you make your own enquiries regarding material information about this property.





Montrose Place, SW1X

Approximate Gross Internal Area = 339.6sq m / 3655sq ft

This plan is for layout guidance only. Not drawn to scale unless stated. Windows and door openings are approximate. Whilst every care is taken in the preparation of this plan, please check all dimensions, shapes and compass bearings before making any decisions reliant upon them. (ID767266)

We would be delighted  
to tell you more.

**Bertie Hare**  
+44 7769 870 094  
bertie.hare@knightfrank.com

**Knight Frank**  
47 Lower Belgrave Street  
Belgravia, London, SW1W

**knightfrank.co.uk**

**Your partners in property**

1. Particulars: These particulars are not an offer or contract, nor part of one. You should not rely on statements given by Knight Frank in the particulars, by word of mouth or in writing ("information") as being factually accurate about the property, its condition or its value. Neither Knight Frank nor any joint agent has any authority to make any representations about the property, and accordingly any information given is entirely without responsibility on the part of Knight Frank. 2. Material Information: Please note that the material information is provided to Knight Frank by third parties and is provided here as a guide only. While Knight Frank has taken steps to verify this information, we advise you to confirm the details of any such material information prior to any offer being submitted. If we are informed of changes to this information by the seller or another third party, we will use reasonable endeavours to update this as soon as practical. 3. Photos, Videos etc: The photographs, property videos and virtual viewings etc. show only certain parts of the property as they appeared at the time they were taken. Areas, measurements and distances given are approximate only. 4. Regulations etc: Any reference to alterations to, or use of, any part of the property does not mean that any necessary planning, building regulations or other consent has been obtained. A buyer must find out by inspection or in other ways that these matters have been properly dealt with and that all information is correct. 5. Fixtures and fittings: A list of the fitted carpets, curtains, light fittings and other items fixed to the property which are included in the sale (or may be available by separate negotiation) will be provided by the Seller's Solicitors. 6. VAT: The VAT position relating to the property may change without notice. 7. To find out how we process Personal Data, please refer to our Group Privacy Statement and other notices at <https://www.knightfrank.com/legals/privacy-statement>.

Particulars dated May 2024. Photographs and videos dated May 2024. All information is correct at the time of going to print. Knight Frank is the trading name of Knight Frank LLP. Knight Frank LLP is a limited liability partnership registered in England and Wales with registered number OC305934. Our registered office is at 55 Baker Street, London W1U 8AN. We use the term 'partner' to refer to a member of Knight Frank LLP, or an employee or consultant. A list of members names of Knight Frank LLP may be inspected at our registered office. If you do not want us to contact you further about our services then please contact us by either calling 020 3544 0692, email to [marketing.help@knightfrank.com](mailto:marketing.help@knightfrank.com) or post to our UK Residential Marketing Manager at our registered office (above) providing your name and address.