



Chester Square, Belgravia, London SW1W



Chester Square, Belgravia, London **SW1W**

An exceptional six bedroom house for sale in Chester Square, Belgravia, benefiting from a swimming pool, lift, double garage and private roof terrace.

Presented in immaculate condition throughout and covering approximately 8,721 square feet, this substantial White Stucco fronted 'Key' house is located in a prime position on the favoured South terrace of Chester Square with direct views over the square gardens.



Guide price: £26,500,000

Tenure: Freehold

Local authority: City of Westminster

Council tax band: H



Accommodation description:

Principle accommodation is arranged in a classic style for a house of this type with the dining room on the ground floor, formal reception room on the first floor and principle bedroom suite on the second floor. The kitchen is cleverly positioned at the rear of the house offering substantial width and stacks of natural light. There are two bedroom suites on the third floor, and a large guest bedroom suite on the fourth floor. The top floor is currently arranged as a media room but could be converted into two bedroom suites if required, subject to planning and listed building consent which has previously been granted.

Staff accommodation can be found on the lower ground floor along with a massage room and spa, with a swimming pool and jacuzzi. In the basement there is a large gym complete with steam room and sauna. Rarely for a house in Chester Square, the lift runs from the basement all the way to the 4th floor. There is also a double garage proving ample parking and a substantial roof terrace off the first floor reception room with a servery served by a dumbwaiter from the kitchen.

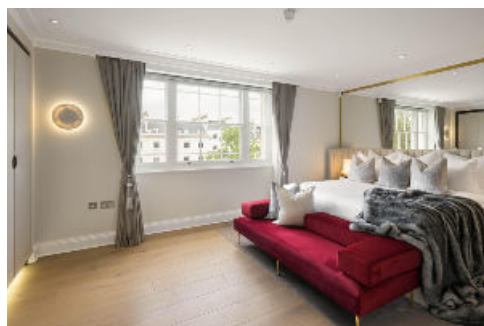
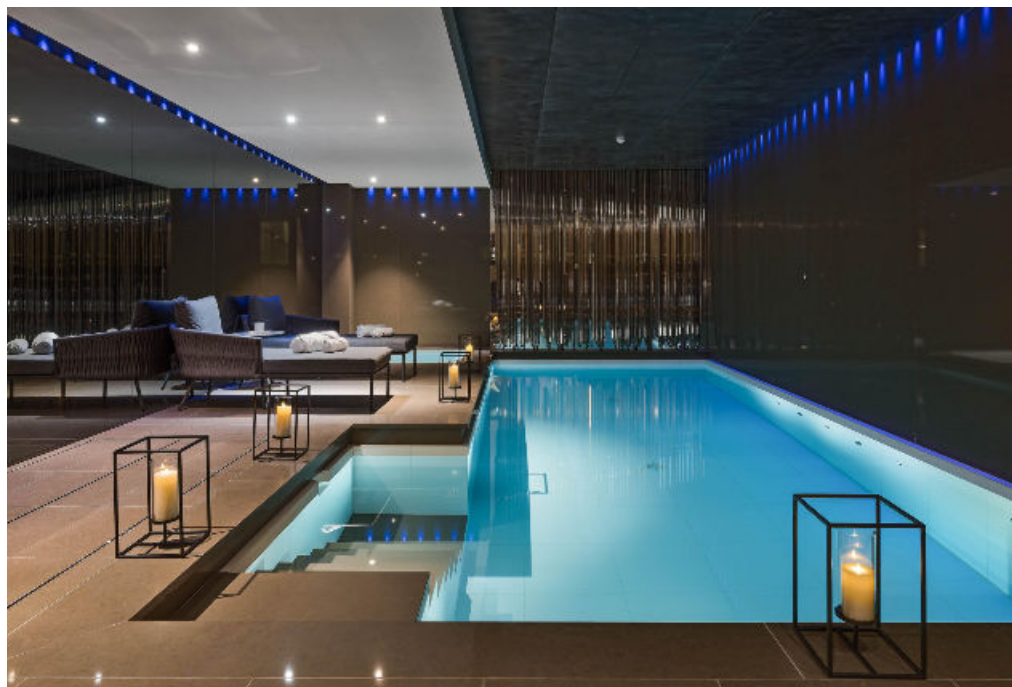


Location description:

Chester Square is regarded as one of the best addresses in London, located conveniently close to Sloane Square, Knightsbridge, Mayfair and Hyde Park.

Additional information:

Please note, we have not yet received confirmation from the client regarding certain information for this property. You should ensure you make your own enquiries.



Located in the heart
of Belgravia

Chester Square, Belgravia, London SW1W

Approximate Gross Internal

Floor Area

810.1 sq m / 8721sq ft

This plan is for guidance only and must not be relied upon as a statement of fact. Attention is drawn to the important notice on the last page of the text of the Particulars.



Knight Frank

Belgravia Sales

47 Lower Belgrave Street

London

SW1W 0LS

[knightfrank.co.uk](https://www.knightfrank.co.uk)

I/We would be delighted to tell you more

Bertie Hare

020 7881 7721

bertie.hare@knightfrank.com



Fixtures and fittings: A list of the fitted carpets, curtains, light fittings and other items fixed to the property which are included in the sale (or may be available by separate negotiation) will be provided by the Seller's Solicitors.

Important Notice: 1. Particulars: These particulars are not an offer or contract, nor part of one. You should not rely on statements by Knight Frank LLP in the particulars or by word of mouth or in writing ("information") as being factually accurate about the property, its condition or its value. Neither Knight Frank LLP nor any joint agent has any authority to make any representations about the property, and accordingly any information given is entirely without responsibility on the part of the agents, seller(s) or lessor(s). 2. Photos, Videos etc: The photographs, property videos and virtual viewings etc. show only certain parts of the property as they appeared at the time they were taken. Areas, measurements and distances given are approximate only. 3. Regulations etc: Any reference to alterations to, or use of, any part of the property does not mean that any necessary planning, building regulations or other consent has been obtained. A buyer or lessee must find out by inspection or in other ways that these matters have been properly dealt with and that all information is correct. 4. VAT: The VAT position relating to the property may change without notice. 5. To find out how we process Personal Data, please refer to our Group Privacy Statement and other notices at <https://www.knightfrank.com/legals/privacy-statement>.

Particulars dated January 2025. Photographs and videos dated April 2024.

Knight Frank is the trading name of Knight Frank LLP. Knight Frank LLP is a limited liability partnership registered in England and Wales with registered number OC305934. Our registered office is at 55 Baker Street, London W1U 8AN where you may look at a list of members' names. If we use the term 'partner' when referring to one of our representatives, that person will either be a member, employee, worker or consultant of Knight Frank LLP and not a partner in a partnership. If you do not want us to contact you further about our services then please contact us by either calling 020 3544 0692, email to marketing.help@knightfrank.com or post to our UK Residential Marketing Manager at our registered office (above) providing your name and address.