

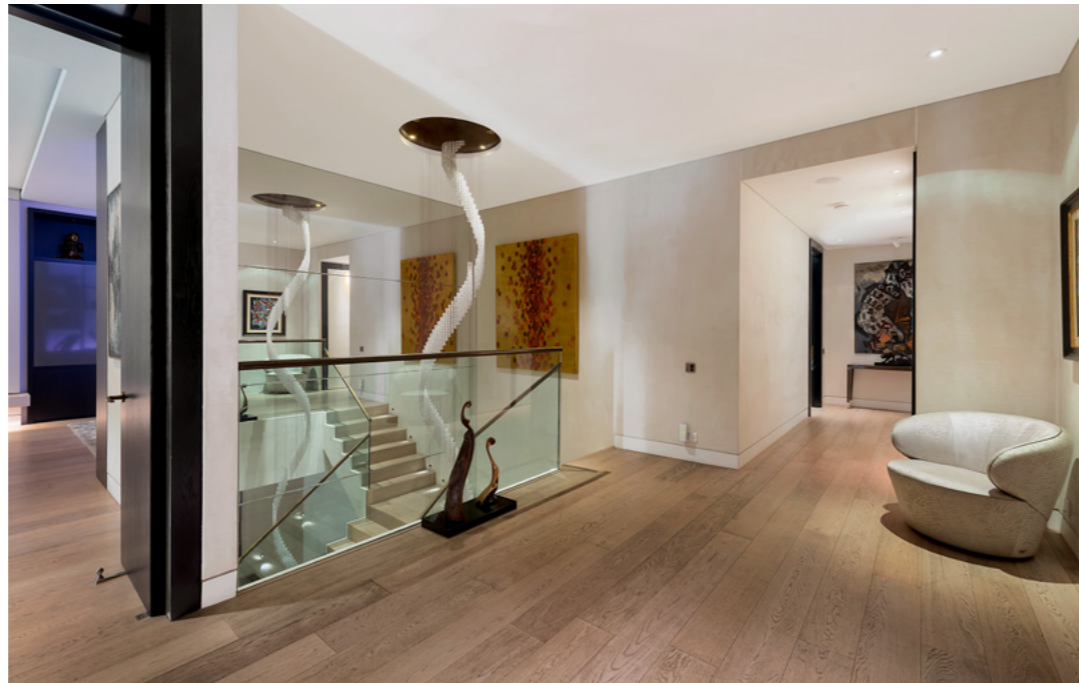
Montrose Place, Belgravia SW1



A superb apartment in Belgravia

Located in a premier building of exclusive apartments in Belgravia, just behind Belgrave Square, this apartment is a large duplex unit which benefits from 24 hour concierge and parking. The accommodation is presented in very good condition throughout and covers approximately 4,649 sq ft.

The flat is arranged over two floors with the reception room, kitchen and principal bedroom on the first floor, with additional bedrooms on the ground floor. There is private secure parking for four cars and a store room in the basement which can be accessed directly from the flat.



5 4 2 1 4 EPC B

Tenure

Leasehold: approximately 110 years remaining

Guide Price

£11,000,000

Local Authority

City of Westminster

Service Charge

£148,129.52 per annum

Council Tax

Band H





Accommodation

5 Bedrooms | 4 Bathrooms | Reception room
Dining room | Kitchen | Guest cloakroom
Utility room | Wine cellar | Storage room
4 Car parking spaces

Location

Montrose Place is quietly situated just off of Belgrave Square, in the heart of Belgravia, and within easy access of Knightsbridge and the West End. Hyde Park underground station is 0.3 miles away. (All distances are approximate).

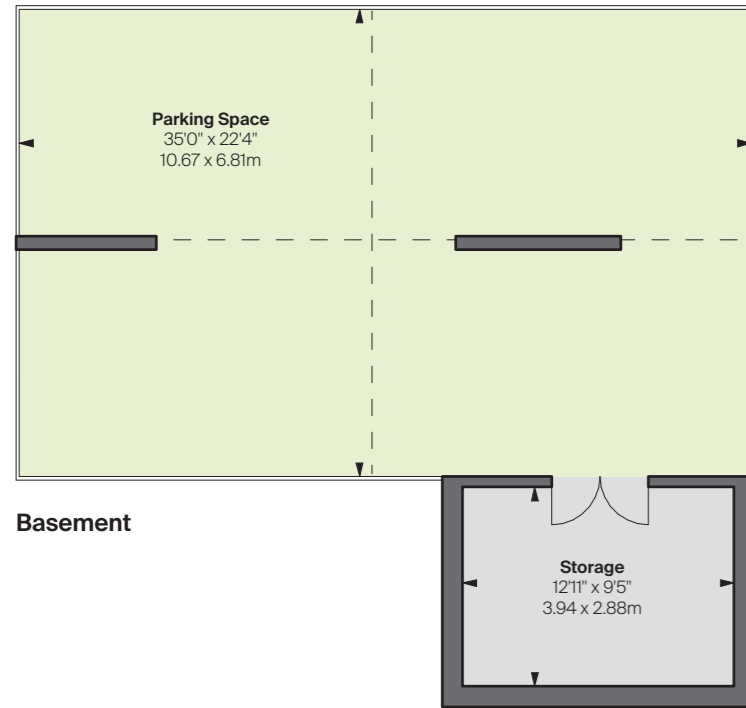
All distances are approximate.



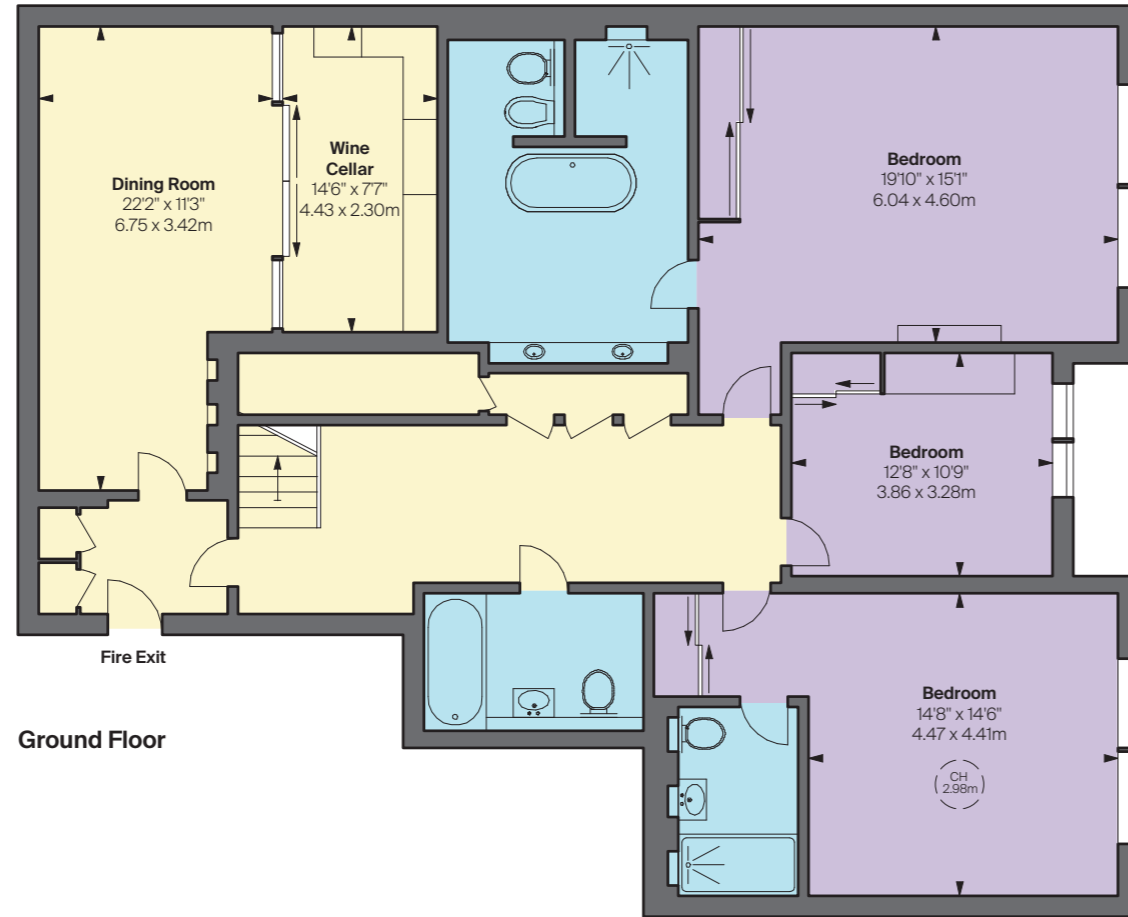


Approximate Gross Internal Area	Storage Area	Total Area
4,526 sq ft	123 sq ft	4,649 sq ft
420.47 sq m	11.43 sq m	431.89 sq m
excluding storage		

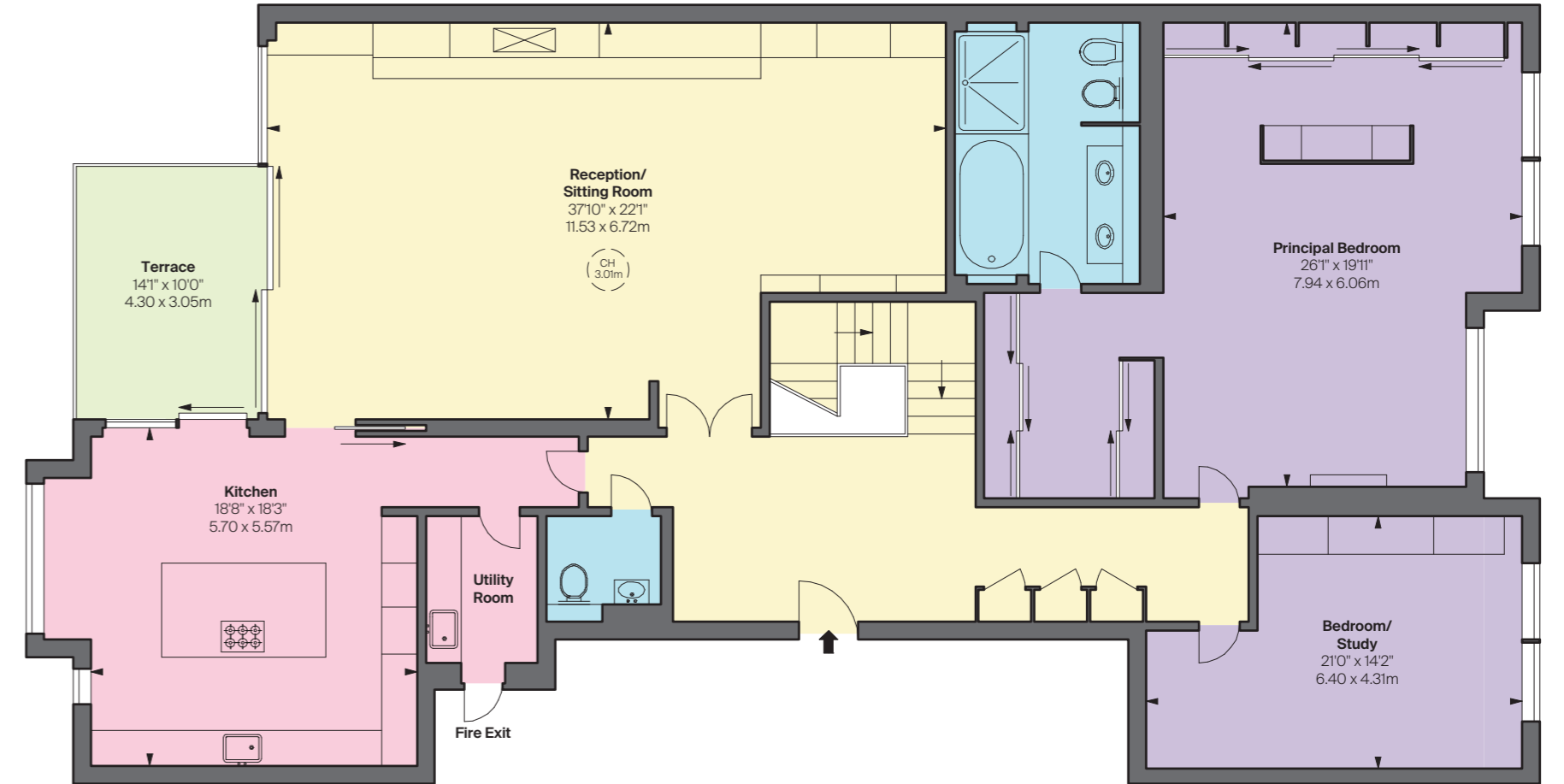
This plan is for guidance only and must not be relied upon as a statement of fact. Attention is drawn to the important notice on the last page of the text of the Particulars.



Basement



Ground Floor



First Floor



Knight Frank

Belgravia & Westminster

47 Lower Belgrave Street

London SW1W 0LS

Bertie Hare

020 7881 7721

bertie.hare@knightfrank.com

knightfrank.co.uk



Savills

Sloane Street

139 Sloane Street

London SW1X 9AY

Richard Dalton

020 7730 0822

rdalton@savills.com

savills.com



Fixtures and fittings: A list of the fitted carpets, curtains, light fittings and other items fixed to the property which are included in the sale (or may be available by separate negotiation) will be provided by the Seller's Solicitors.

Important Notice: 1. Particulars: These particulars are not an offer or contract, nor part of one. You should not rely on statements by Knight Frank LLP in the particulars or by word of mouth or in writing ("information") as being factually accurate about the property, its condition or its value. Neither Knight Frank LLP nor any joint agent has any authority to make any representations about the property, and accordingly any information given is entirely without responsibility on the part of the agents, seller(s) or lessor(s). 2. Photos, Videos etc: The photographs, property videos and virtual viewings etc. show only certain parts of the property as they appeared at the time they were taken. Areas, measurements and distances given are approximate only. 3. Regulations etc: Any reference to alterations to, or use of, any part of the property does not mean that any necessary planning, building regulations or other consent has been obtained. A buyer or lessee must find out by inspection or in other ways that these matters have been properly dealt with and that all information is correct. 4. VAT: The VAT position relating to the property may change without notice. 5. To find out how we process Personal Data, please refer to our Group Privacy Statement and other notices at <https://www.knightfrank.com/legals/privacy-statement>.

Particulars dated June 2022. Photographs and videos dated May 2022.

Knight Frank is the trading name of Knight Frank LLP. Knight Frank LLP is a limited liability partnership registered in England and Wales with registered number OC305934. Our registered office is at 55 Baker Street, London W1U 8AN where you may look at a list of members' names. If we use the term 'partner' when referring to one of our representatives, that person will either be a member, employee, worker or consultant of Knight Frank LLP and not a partner in a partnership. If you do not want us to contact you further about our services then please contact us by either calling 020 3544 0692, email to marketing.help@knightfrank.com or post to our UK Residential Marketing Manager at our registered office (above) providing your name and address. 10/09/23 KF-220607B-09GG