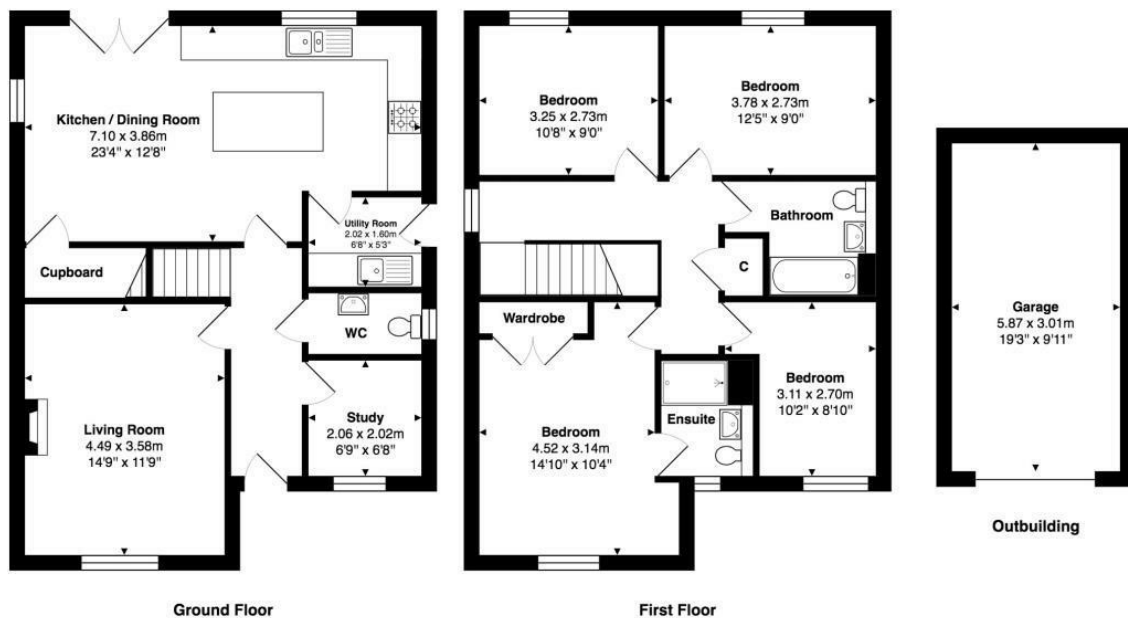




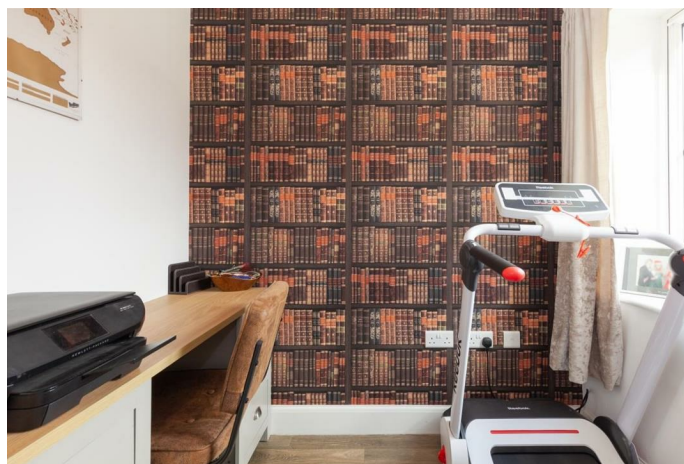
14, BARTLETT ROAD, BLOXHAM, OX15 4ST

FLOWERS 
ESTATE AGENTS



Approximate Gross Internal Area
124.5 m² ... 1340 ft² (excluding garage)

Whilst every attempt has been made to ensure the accuracy of the floor plan contained here, measurements of doors, windows, rooms, and any other items are approximate. No responsibility is taken for any error, omission, or mis-statement. This plan is for illustrative purpose only and should be used as such.
Drawn by EB Property Services. www.ebps.co.uk





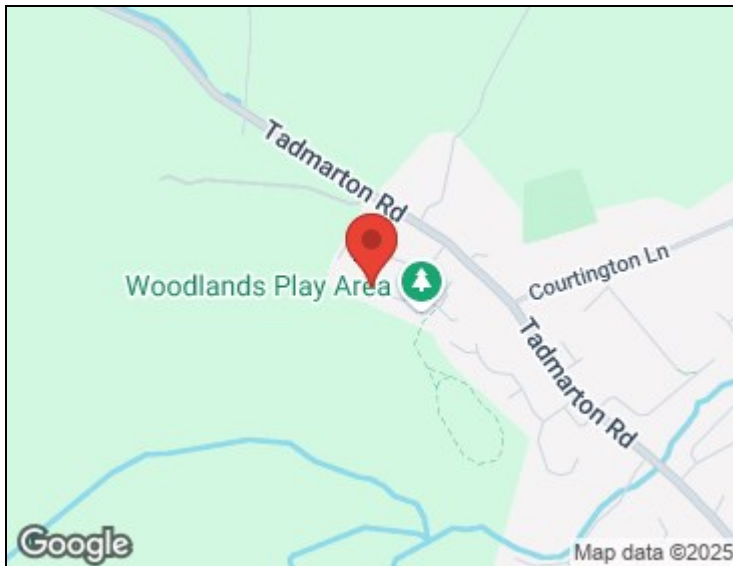
14, Bartlett Road, Bloxham, OX15 4ST

Freehold

- Four bedroom detached family home
- Garden to rear
- Garage and off-street parking
- En-suite in principle bedroom
- Open plan kitchen/dining room
- Separate study

A beautifully presented four bedroom detached house in Bloxham. This house comes with an open plan kitchen/dining room, separate utility room, study, down stairs WC. On the first floor there are three double bedrooms, one with en-suite, a single bedroom and a family bathroom. Externally, there is a fully enclosed rear garden, garage and drive way parking.





CONTACT

Flowers Estate Agents

London House
16 Oxford Street
Woodstock
OX20 1TS

01993 627766
woodstock@flowersestateagents.com

Energy Efficiency Rating

	Current	Potential
Very energy efficient - lower running costs		
(92 plus) A		
(81-91) B	88	89
(69-80) C		
(55-68) D		
(39-54) E		
(21-38) F		
(1-20) G		
Not energy efficient - higher running costs		
England & Wales	EU Directive 2002/91/EC	

Bloxham is a popular village positioned between the market towns of Banbury and Chipping Norton. The village has a good range of amenities including a Post Office, Co-op, two cafés, petrol station, three public houses, doctors, dentist, village museum and a number of other small shops as well as a 14th century church.

Schooling in the village is excellent and includes a preschool, primary, comprehensive (The Warriner School) and two independent schools (Bloxham School and Tudor Hall).

There are village tennis and football clubs. Golf courses can be found at Tadmarton Heath, Rye Hill, Adderbury and Chipping Norton.

Regular mainline train services run from Banbury to London Marylebone and Birmingham and the M40 (J11) is within easy distance.

Local Authority: Cherwell District Council

Council Tax Band: E

These details are prepared for the convenience of prospective purchasers, and are a general outline for guidance. They do not constitute parts of an offer or contract. All descriptions, dimensions, references to permission for use or occupation, and any other details, are given in good faith and are believed to be correct, but any intending purchaser should not rely on them as statements or representations of fact, but must satisfy themselves by inspection or otherwise as to the correctness of these details. Photographs contained in these details may have been taken with a wide angle lens.

