





INTERNAL MODERNISATION REQUIRED TO FURTHER INCREASE VALUE

MQ Estates are delighted to bring to the market this spacious three-bedroom mid-terraced home located in the popular residential area of Boretreehill North, Irvine.

The property offers generous accommodation across two levels and presents an excellent opportunity for buyers looking to add value through internal modernisation.

Accommodation comprises:

Welcoming entrance hallway

Bright and spacious lounge

Separate dining room with direct access to the rear garden

Fitted kitchen

Three well-proportioned bedrooms

Family bathroom

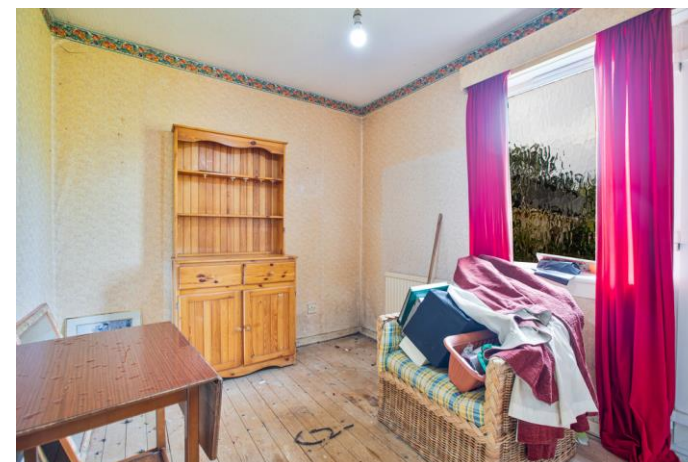
Externally, the property benefits from both front and rear gardens, providing private outdoor space.

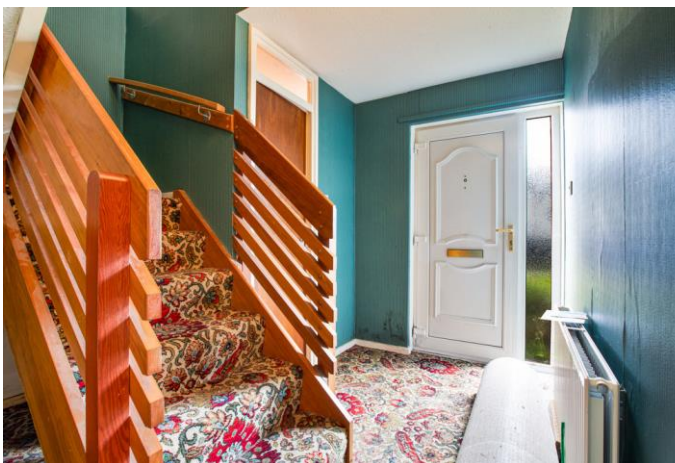
Situated in a well-established community, the home is close to a variety of local amenities, schools, and leisure facilities. Excellent road links via the A78 ensure convenient travel to surrounding towns and further afield.



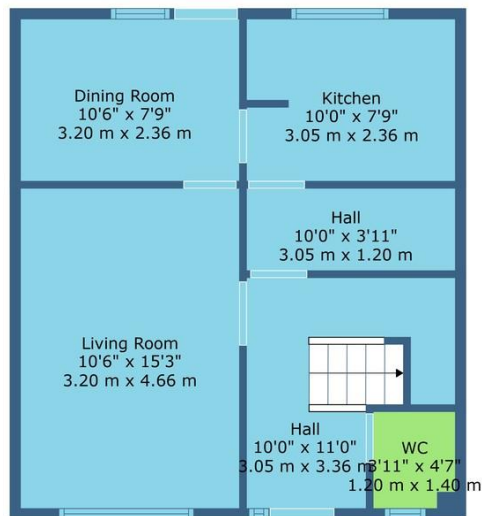
This property represents a fantastic opportunity for families, first-time buyers, or investors to create a modern and comfortable home tailored to their needs.

MQ Estate Agents are open 7 days a week:
Monday to Friday 8am to 8:30pm & Saturday & Sunday 8.30am - 8pm to arrange your viewing or valuation appointment.

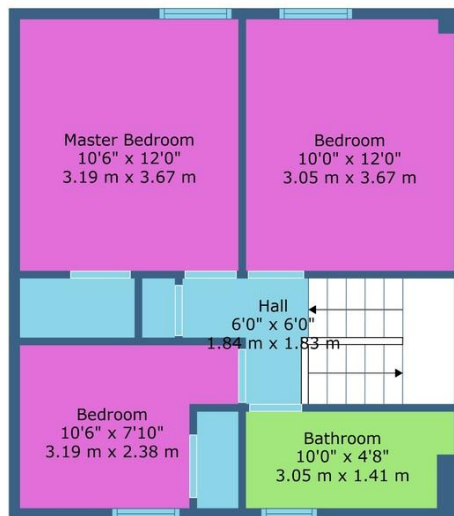








Floor 1



Floor 2

TOTAL: 974 sq. ft, 90 m2
 FLOOR 1: 487 sq. ft, 45 m2, FLOOR 2: 487 sq. ft, 45 m2
 EXCLUDED AREAS: WALLS: 66 sq. ft, 6 m2

